

CviLux Group Product Lines Guide

CviLux Group

- Electronics Connectors
- Fiber Optics
- Flat Flexible Cables
- LVDS / EDP FFC Assemblies
- Cable Assemblies
- Customized Wire Harnesses
- Power Connectors
- Automotive Connectors
- Design-In Connectors
- CviLux Sensors
- PCBA

• Allsor

- MOSFETS
- Capacitors
- Fuses
- Bridges
- ESD Protectors



CviLux Group Overview

Company Introduction

Founded in 1990, CviLux Group is a publicly traded company on the Taiwan Stock Exchange (TWSE: 8103), headquartered in Tamsui, Taiwan. Specializing in the R&D, manufacturing, and sales of electronic connectors, flexible flat cables (FFC/FPC), wire harnesses, and related components, CviLux serves industries such as consumer electronics, computing, communications, and optoelectronics. With a financially robust foundation and global presence, CviLux is committed to becoming a world-leading provider of electronic components and sustainable solutions.

One-Stop Electronic Components Solutions

CviLux Group offers comprehensive solutions, encompassing electronic connectors, wire harnesses, FFC/FPC, sensor components, circuit protection devices, PCBA, electronic accessories, and finished products. Additionally, CviLux acts as a distributor for diverse electronic components, expanding its product portfolio to meet comprehensive customer needs.

Core Strengths:

- **Product Diversity:** Offers board-to-board, wire-to-board, FFC/FPC, USB Type-C, and I/O connectors, ensuring stable and reliable high-speed signal transmission; customized wire harnesses and cable assemblies designed for harsh environments; and PCBA and finished products with SMT, OEM, and ODM services.
- **urnkey Services:** Integrates R&D, proprietary brand manufacturing, and global sales to deliver high-quality, efficient, and cost-effective solutions.
- **Global Manufacturing and Delivery:** Operates production facilities in Tamsui (Taiwan), Dongguan, Suzhou, Chongqing, Anhui (China), Vietnam, and Laos to meet global delivery demands.

CviCloud ESG Smart Carbon Cloud (ECSC) Solutions

CviCloud, a division of CviLux, introduces the ECSC Smart Carbon Cloud platform, integrating Smart Manufacturing Execution System (SMES), Smart Energy Management System (SEMS), Smart Environment, Health, and Safety System (SEHS), and Smart Carbon Management System (SCMS). Leveraging smart sensors, cloud data, and AI analytics, ECSC enables carbon inventory, product carbon footprint management, and ESG compliance reporting. Deployed on Microsoft Azure as a SaaS model, it supports ISO 14064/14067 and EU CBAM standards.

Competitive Advantage

1. A Publicly Traded Company on Taiwan Stock Exchange (TWSE 8103)
2. Global Sales Networking
3. Utilizes advanced ERP systems and prioritizes customer service excellence
4. Full Operation and Management Information System
5. Turnkey Green Product Solution
6. International Qualification and Industrial Certificate

Core Value:

- **Energy and Carbon Reduction:** Achieves 10-20% energy savings and reduces carbon tax and penalty risks.
- **Efficiency Improvement:** AI-driven real-time monitoring and forecasting enhance production line efficiency by 5-15%.
- **Sustainability Compliance:** Supports GRI, SASB, and TCFD reporting, strengthening competitiveness in global green supply chains.
- **Application Scenarios:** Smart factories, offices, homes, and supply chain management, supporting the transition from carbon neutrality to net-zero emissions.

Global Marketing Network and Competitive Edge

CviLux Group has established a global presence with sales networks across Europe, Asia, and the Americas, supported by advanced ERP systems and comprehensive operational management systems to provide localized technical support and exceptional customer service. The ECSC solution adopts a B2B model, collaborating with regional distributors and ESG consulting firms under a profit-sharing structure (20-30% for distributors, 10-15% for partners). The initial focus is on small and medium-sized manufacturers and commercial offices, with a goal to reach 30 clients across three countries within 12 months, generating revenue of NTD 20 million.

Competitive Advantages:

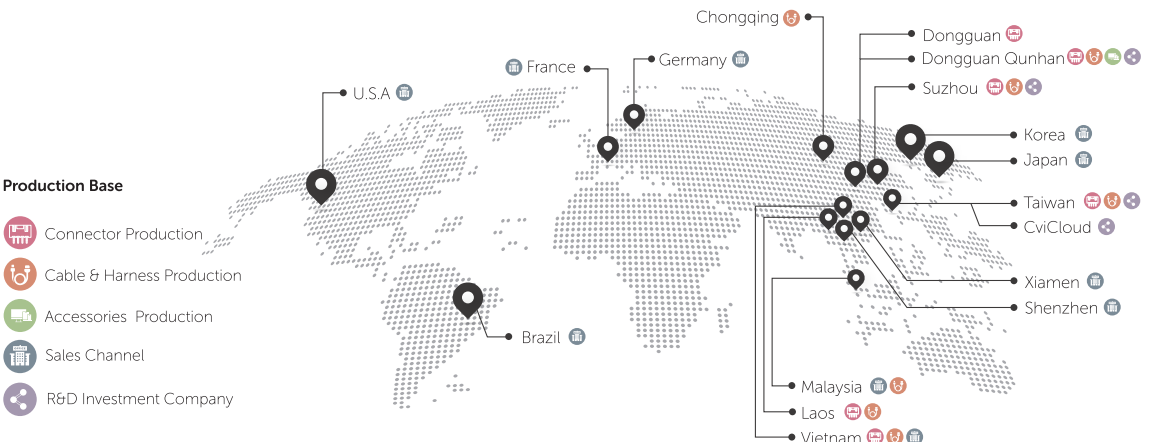
- **Global and Localized Integration:** Manufacturing bases in Taiwan, China, Vietnam, Malaysia, and Laos, paired with sales networks in major industrial countries, ensure rapid response to customer needs.
- **Brand and Sustainability Leadership:** Complies with RoHS, REACH, and other environmental regulations, with product carbon footprint verification enhancing global green supply chain positioning.
- **Taiwan Benchmark:** As a leading Taiwanese company, CviLux ranks among the top in ESG evaluations, demonstrating commitment to sustainable development.
- **International Certifications and Quality Assurance:** Products meet international standards and certifications, with partnerships in OBM/ODM/OEM projects with globally renowned enterprises, reinforcing brand credibility.
- **Digitalization and Customer Focus:** Utilizes advanced ERP and information systems to prioritize exceptional customer service and enhance market competitiveness.

Vision and Mission

Rooted in stability, speed, and quality, CviLux Group aims to deliver faster, better, and higher-value products and services to earn customer trust. By connecting the world through its offerings, CviLux strives to share success with shareholders and employees, becoming a global leader in sustainable business while driving digital transformation and ESG initiatives.



CviLux Corporation
Headquarters, Taiwan



TERMS & CONDITIONS

Sample Request

Samples will be dispatched out by freight collected courier against prices approved by customers.

Tape & Reel Request

T/R available, please consult manufacturer for details.

Quotation Validity

Quoted prices are based on current selling prices and will be valid within 6 months from issued date. CviLux reserves the right to adjust quoted prices any time in response to International raw material costs or simply error correction on typing.

Export Payment Terms

Standard term is T/T in advance. Payment term extension application to be approved by CviLux individually.

Minimum Package Quantity

Customer order quantity should meet our minimum package quantity for purpose of inventory control and speeding up for delivery.

Minimum Order Quantity

To smooth production process, please place orders to meet our MOQ based on different products.

Delivery Term

(A) Air shipment amount over USD 5000/ EURO 4500
F.C.A. Taiwan/H.K./ Shanghai.

(B) Air shipment amount less than USD 5000 / EURO 4500:
F.C.A. Taiwan/H.K./ Shanghai + handling charge USD 350/
EURO 310 or EXW without handling charge.

(C) Sea shipment amount over USD 12000/ EURO 11000:
F.O.B. Taiwan/H.K./ Shanghai.

(D) Sea shipment amount less than USD 12000/ EURO 11000: F.O.B. Taiwan/H.K./Shanghai + handling charge USD 350/ EURO 310 or EXW without handling charge. CviLux reserves the right to adjust handling charge to reflect actual transportation cost and exchange rate if any necessary.

Time of Delivery

All delivery dates quoted are estimated, are not guaranteed and do not form a term of contract, while every endeavor will be made to comply with these dates, CviLux shall have no liability for any delay in dispatch or delivery.

Placing Orders

Please place a formal order by fax, e-mail. Verbal Phone orders will not be accepted or entered into our system. place a formal order by fax, e-mail. Verbal phone orders will not be accepted or entered into our system.

Orders Cancellation and Changes

Customer's orders' cancellation or changes should be informed in 3 days after orders placing. Any unrecoverable manufacturing cost raised by the cancellation and changes will be charged to the customers.

Shipping

Special shipping instruction will be followed whenever possible. If no special demand of shipping, we will deliver the shipment to you with the "best way."

Constant Product Improvement

The products supplied may not be agreed in all details with description and illustrations. Product specifications are subject to constant improvement.

Guarantee

All "non-customized" parts from CviLux Corporation are unconditionally guaranteed for 30 days from the date of shipment.

Warranty

CviLux Corporation warrants the materials and workmanship of its products for 80 days from the date of shipment.

Returned Goods

Any defects or errors for which we are responsible will be promptly rectified. Approval for return of goods must be requested by CviLux. All products returned must have been purchased from CviLux Corporation within 6 months from the date of invoice, and must be packed and shipped in clean and re-saleable condition. Credit for returned goods shall only be allowed by receiving CviLux official credit notes acer above requirements have been met

Force Majeure

CviLux shall have no liability in respect of failure to deliver or per form or delay in delivering or performing any obligations to the customer, due to any cause of whatsoever nature outside of the reasonable control of the seller including but not limited to causes arising from acts or omissions of the customer.

Export Control Regulations

Some or All of the goods supplied by CviLux may be subject to export control regulations. Such goods may not be exported by the customer without prior approval of the relevant authorities. It is the responsibility of the customer to obtain such approval. Under no circumstances shall the seller be liable for any loss or damages incurred by the customer as a result of customer's contravention of any export control regulations.



FFC FPC Connectors
CF Series



CF07 1.00mm SMT
Downside



CF07 1.00mm SMT
Upside



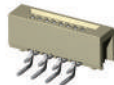
CF10 1.00mm Right
Angle DIP Downside



CF10 1.00mm Right
Angle DIP Upside



CF10 1.00mm Top
Entry SMT



CF16 1.00mm Right
Angle DIP Downside



CF16 1.00mm Right
Angle DIP Upside



CF16 1.00mm Top
Entry SMT



CF25 1.00mm
One-Touch DIP



CF31 1.00mm Side
Entry SMT



CF34 0.5mm
One-Touch SMT



CF35 0.50mm
One-Touch SMT



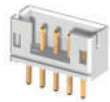
CF39 0.50mm
One-Touch SMT



CF92 0.50mm SMT
ZIF Automatic



**Wire to Board Connectors
CI Series**



CI01 2.00mm Single Row DIP Type Pin Header



CI01 2.00mm Single Row Right Angle Pin Header



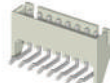
CI01 2.00mm Single Row SMT Header



CI02 2.00mm Board In



CI22 2.50mm Crimp Housing



CI22 2.50mm Right Angle Header



CI25 2.50mm Crimp Housing



CI25 2.50mm Straight DIP Type Header



CI25 Series 2.50mm Right Angle Header



CI31 2.54mm Crimp Housing



CI31 2.54mm Right Angle Header



CI31 2.54mm Straight DIP Type Header



CI44 1.25mm Crimp Housing



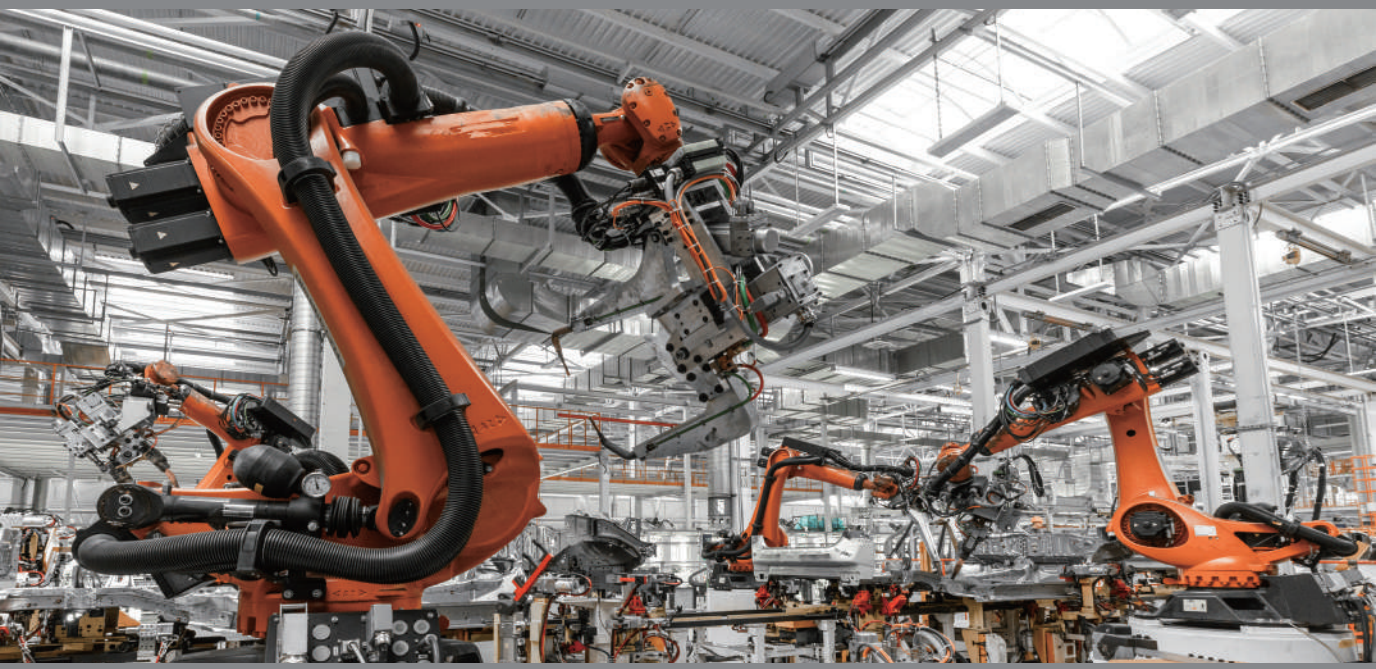
CI44 1.25mm Side Entry SMT Header



CI44 1.25mm Straight DIP Header



CI44 1.25mm Top Entry SMT Headers



Power Connectors
CP Series



CP08



CP-011 Dual Rows
Housing



CP-011 Single Row
Housing



CP-013 4.20mm
Dual Rows Headers



CP-014 4.20mm
Dual Rows DIP
Headers



CP-014 4.20mm
Dual Rows Right
Angle DIP Header



CP33 5.08mm
Straight DIP



CP35 3.00mm Dual
Rows DIP Header



CP35 3.00mm Dual
Rows Header



CP35 3.00mm Dual
Rows Right Angle
Header



CP35 3.00mm Dual
Rows SMT Header



CP35 3.00mm Dual
Rows Crimp
Housing



CP35 3.00mm Dual
Rows Header



CP35 3.00mm Dual
Rows Header



CP75 1.50mm Plug



CP75 1.50mm
Receptacle



**Pin Header
CH Series**



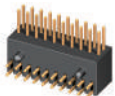
CH01-SMT



CH31-smt



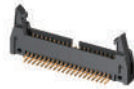
CH51-v



CH53-h-1



CH53-h-2



CH88-h



CHC2-SMT-2



CHC2-SMT-2-1

**Socket
CS Series**



CS02



CS04



CS05



CS07



CS08



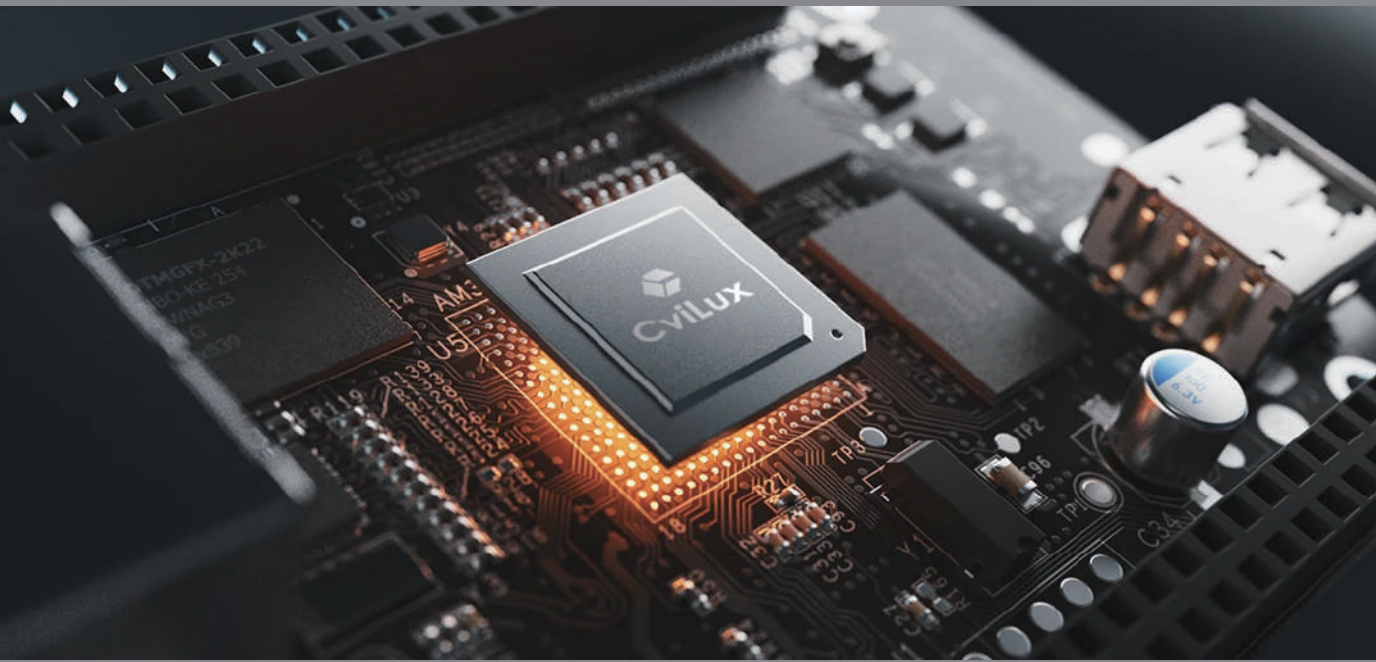
CS09



CS10



CS21



**I/O Connectors
CU Series**



CU01
USB type A



CU02
Mini USB



CU05
IEEE1394



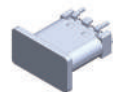
CU11
HDMI type A



CU30
USB type C plug



CU18
USB type C Stright DIP



CU18
USB type C Stright
(Short body)



CU32
USB type C
(Top mount)



USB Type E Plug



CU09
Micro USB



CU07
DVI



CU15
DP-20 Pin Male
Vertical Solder Type

**I/O Connectors
CJ Series**



Modular Jacks



Modular Plugs



Multi-Port RJ45 Jacks



**D-Sub Connectors
CD Series**



11W1



13W3



17W2



C5W5



CD01



CD02



CD04



CD63

**Solar Connectors
CPT3 Series**



MC4 Connector Plug
Solar Panel Connector



MC4 Connector Receptacle
Solar Panel Connector



Solar Branch Adapter
Up to 2/3/4/5-to-1
Parallel connection & IP67



Cable Assembly

**IDC Connectors
CA Series**



CA 30
IDC Connector



CA32
DIP with Latch



CA35
Male Vertical DIP



IDC
Cable Assembly



Push-Pull



Metal Push-Pull
Self-locking
High-density contacts



Metal Connectors
Plug/Socket
Locking Methods



PA66 Push-Pull
High-performance
plastics (PC, PA66, PSU,
and PEI)



Quick-Connect
Plug - IP68 Waterproof



Metal Push-Pull
High-Reliability



Bulkhead
Receptacles &
Panel-Mount Sockets



Metal Push-Pull
High-Density
Multicore



Metal Push-Pull
High-Density
Multicore

Coaxial CMC Serie



Coaxial Panel Mount
Front
Locked Soldering Wire



Angled Coaxial
Front
Locked 90° PCB



Standard Coaxial
Range from M5 to M45



Cable Assembly
Custom high-performance
signal & data transmission

RF Coaxial CRA Serie



Micro Coaxial
CRA Series



Micro Coaxial Cable
CRA*W Series



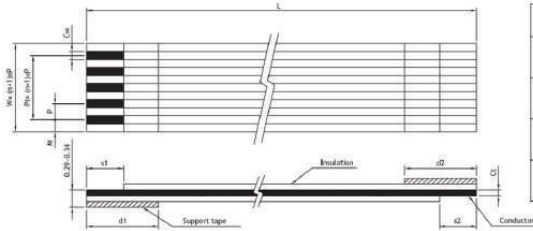
FFC Cables



FFC Cables



FFC Options
Positions, Length, Folding,
Shielding, Marking, and more



TERMINAL TYPE	
T1	
T2	
T7	
T9	

Cable Assemblies



Wire Harnesses



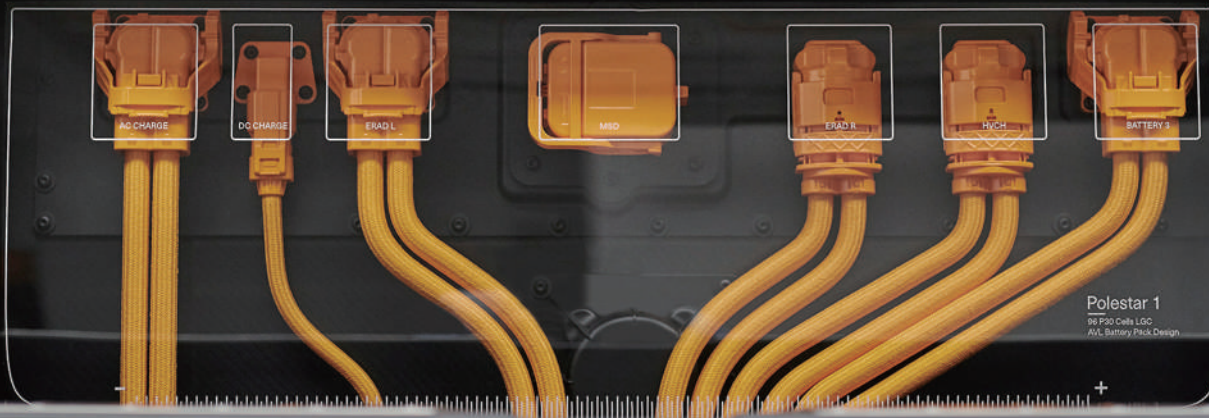
Flat Cables



High-Frequency
Cables



Automotive
Cable Assembly



FAKRA Connectors



FAKRA
PCB, Plug & Cable



FAKRA HSD
HSD 4+2 Power Male
DIP Type Connector



Mini FAKRA
PCB, Plug & Cable



HD Camera
PCB, Plug & Rear
Housing



Ethernet Connectors
PCB, Wire Male & Female



USB
Mini, PCB & Cable



SMA/FAKRA Adapter



MMCX for V2X

Waterproof Connectors



CPB Series
IP67 Waterproof



DT Connectors
CPT Series



Waterproof Header
SMT Type



Waterproof Header
SMT Type

Automotive Connectors



Automotive Connectors
IP67 Waterproof



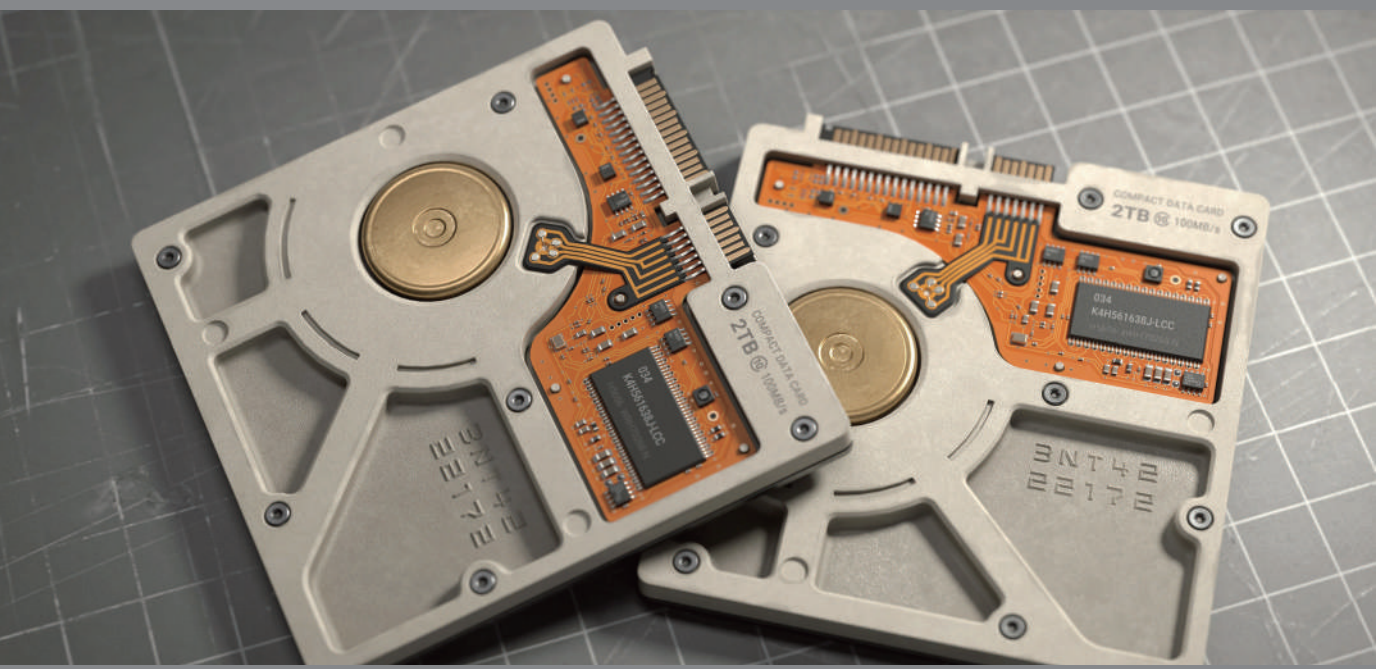
H Connectors
P67 Waterproof
& Others



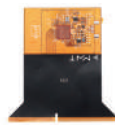
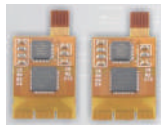
LiDAR Connectors
Receptacle



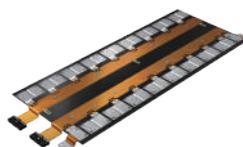
Automotive Connectors



FPC Cable
FPC Series



BMS
CCS Series





Board to Board CB Series



CBSQ
Male



CBSQ
Female



CBSL



CBSM

Server Connectors CP Series



Power Connector
PCB - Power & Signal



V-Conn CPF1
PCB, Plug &
Rear Housing



V-Conn CPF2
PCB, Plug &
Rear Housing



High Power Pin
Torsion Spring, Crown Pin
& Blade Pin



**Storage - UPS
Connector**
Receptable



Storage - UPS Connector
Plug - Quick-locking



High Power Connector
Power & Signal



Cable Assembly
High Power

Bus Bars CPST Series



Aluminium Bus Bar
Custom



Copper Bus Bar
Flexible & Protective



High Power Bus Bar
High Current
High Voltage



Braided Ground Strap
High flexibility
Vibration resistance



POGO Pin



POGO Pin
Female SMT Type



POGO Pin
Male DIP Type



POGO Pin
Connector
Signal & Power



POGO Pin
Connector Signal &
Coaxial Solution

Quick-Connect



Circular Plastic



Dust-Capped Pair



Push-Pull Metal



High-Current Power

Rectangular Power



Wire-to-Board



Panel Mount



High-Density Power



Cable-to-Cable

Industrial Connector



Modular Insert



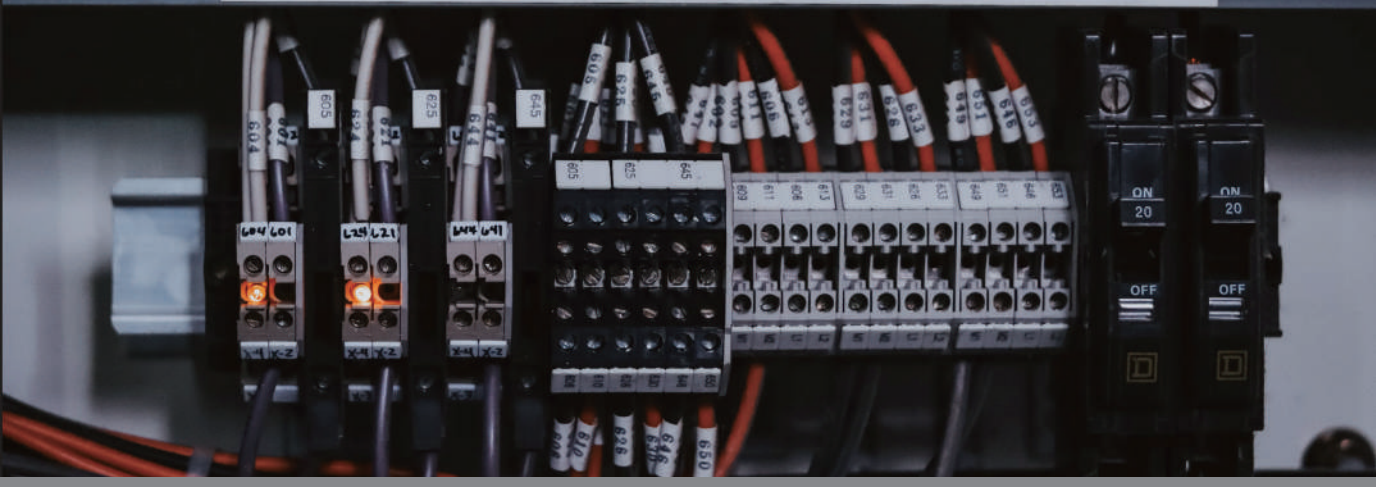
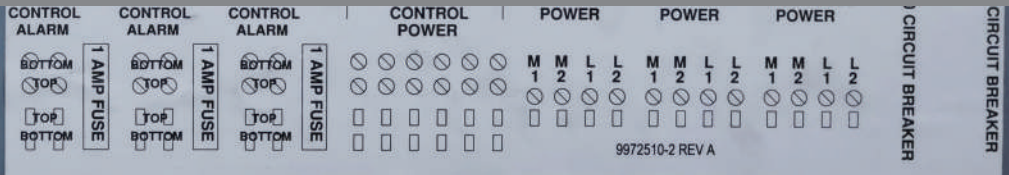
Heavy-Duty Frame



D-Sub Industrial



Pneumatic Hybrid



**Terminal Block
CPCx Series**

-  European-Style
-  European-Style
-  Spring-Loaded
-  Spring-Loaded
-  Plug-In Female
-  Plug-In Female
-  Plug-In Male
-  Plug-In Male
-  Barrier
-  Protective Cover Barrier
-  High Power Rail
-  Modular Power Rail

**Mounting &
Insulation**

-  Insulating Stand-off
-  High-Voltage Base
-  Steel Mounting Foot
-  Conductive Grounding Foot

Applications



Automotive & Transportation



Network & Communications



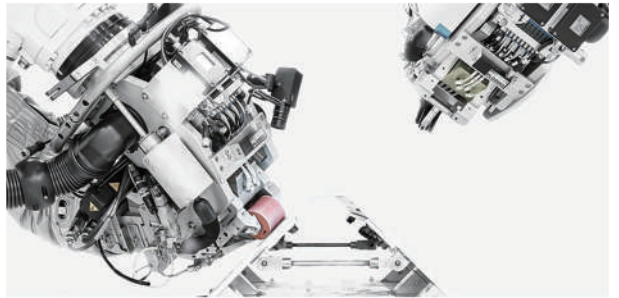
Laptops & Computing



Consumer Electronics



Optoelectronics



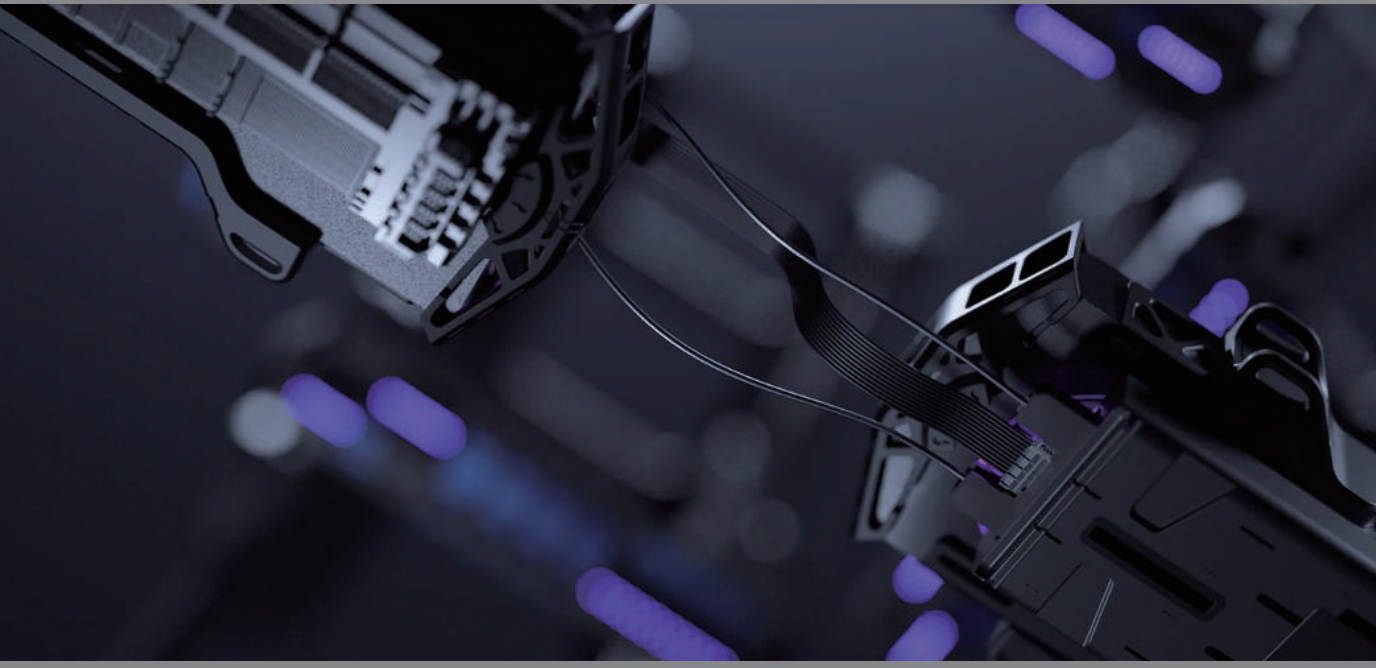
Robotics & Medical Devices



Storage & New Energy



Home & Smart Appliances



CviLux Sensor

Founded in 2015 as an affiliate of the renowned listed company CviLux Group, the company initially focused on NTC temperature sensors. In recent years, in response to growing customer demand, it has integrated group resources and expanded its product line to include protection devices.

It is a technology-driven enterprise that combines R&D, manufacturing, and customized services.

Rooted locally and connected globally, CviLux Sensor is committed to becoming a world-leading manufacturer of sensors and protection devices.

Our products are widely applied across various industries, including automotive, industrial, medical, consumer electronics, and energy management. The company is headquartered in Dongguan, Guangdong, with manufacturing facilities located in Dongguan, Suzhou, Chongqing, Hefei, and Vietnam.

Our products are marketed worldwide, covering Europe, Asia, and the Americas. Through efficient information systems, local distributors are able to provide real-time services to end customers.

We will continue to expand our overseas markets and actively seek collaboration opportunities with globally renowned manufacturers on OBM, ODM, and OEM projects.

In the past, CviLux Sensor has been recognized for its stability, speed, and high quality.

In the future, we will continue to enhance our capabilities and deliver faster, better, and higher value-added products and services to meet your needs.



Sensors

NTC Thermistor Components



SENSOR_CNSE
Epoxy Resin Encapsulation
Structure



CSG Series
Single-Ended Glass
Encapsulation Type



CSG Series
Axial Glass
Encapsulation Type



CSG Series
SMD Chip Thermistor

NTC Sensors



SENSOR_CNESA
Electrical Terminal
Structure



SENSOR_CNSE
Epoxy Resin
Encapsulation Structure



SENSOR_CNSSF
Metal Tube (Case)
Structure



SENSOR_CNSSH
Combination Type
Structure

Over-current Protection



CSC Series
NTC Power Thermistor



CPP Series
PTC Power Thermistor

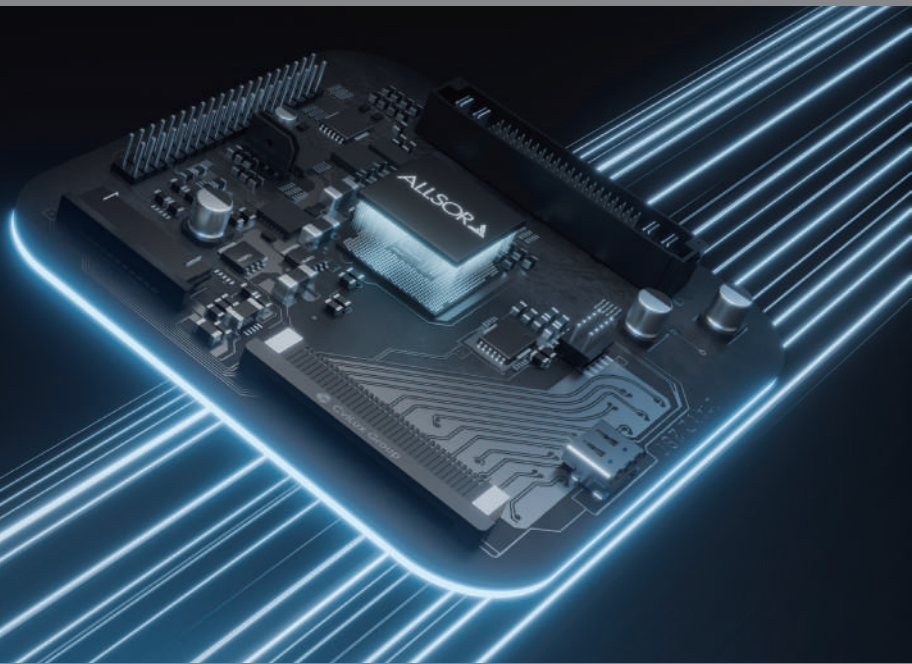
Over-voltage Protection



Thermal Link & MOV
TLMOV Thermally
Protected Varistor



Metal Oxide Varistors
Industrial Surge
Protection Varistor



ALLSOR

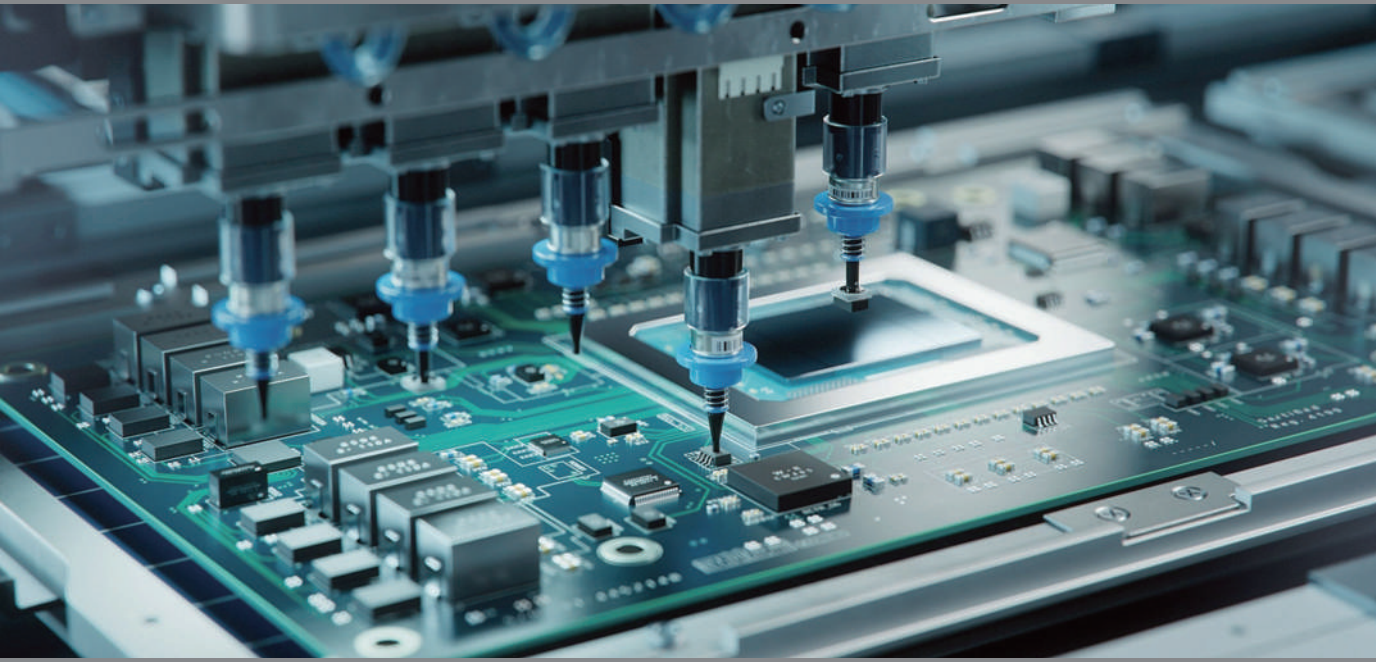
Founded in 2006, Allsor has been continuously innovating technology for its customers. As one of the world's foremost providers of best-selling electronic components and embedded solutions, Allsor is dedicated to responding to dynamic market and demand changes. This commitment is upheld by cultivating a global network of original manufacturers, operating an extensive supply platform, and providing customers of all sizes across the globe with optimal solutions, superior product performance, effective design strategies, and the most reliable supply and delivery support.

Whether your product is in its conceptual phase, scaling for mass production, or at any stage in between, Allsor offers the agility and flexibility to help customers accelerate their time-to-market. By fostering close relationships with the world's most trusted original manufacturers, Allsor helps transform diverse customer concepts and ideas into recognized and highly competitive products ready for the market.

Partners



Export Agen and Distribution



Power & Discrete Semiconductors



Power MOSFETs
High-voltage/current switching



Small-Signal MOSFETs
Low-power switching and signal level shifting



Rectifiers & Diode Bridges
AC to DC conversion and polarity protection



RF MOSFETs
High-frequency communication modules

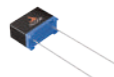
Capacitors & Energy Storage



MLCC
High-density ceramic capacitors



Aluminum Electrolytic
High-capacitance storage power filtering



Film Capacitors
High-reliability units Motor and safety circuits



Supercapacitors
High-energy storage

Circuit Protection



TVS / ESD Diodes
Protecting sensitive ICs from voltage transients



Cartridge & Chip Fuses
Overcurrent protection for PCB and system levels

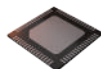


Resettable PTCs
Reusable protection against short circuits and overloads



GDT / MOV
High-energy surge suppression

ICs & Control Systems



MCU / MPU
Microcontrollers and processors



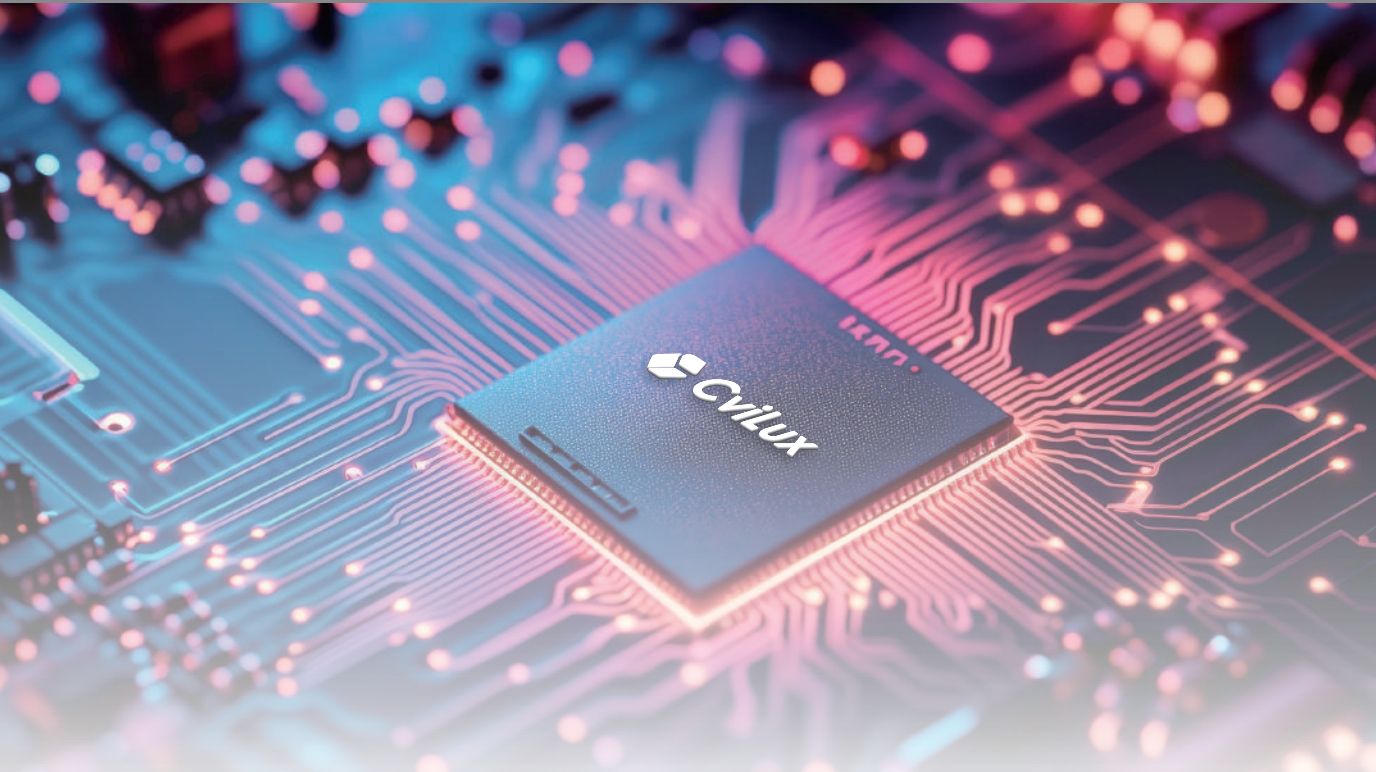
PMIC
Integrated power management Voltage regulation



Memory
Flash or EEPROM Data storage and firmware



Gate Drivers / Op Amps
Signal conditioning and driving power stages



CVILUX PATENT, CERTIFICATE, AWARD

CviLux R&D strength means maximizing our patents, awards and international standard of QC and certificates. We challenge our worldwide granted and pending patents listed as follows (- Oct., 2024) :

- Taiwan : 168 patents granted and pending
- China : 161 patents granted and pending
- USA : 9 patents granted and pending
- Japan : 1 patents granted and pending





Integrated Manufacturing, Energy, and Carbon Management for Smart Carbon and Sustainable Solutions.

Core Values

CviCloud Technology, a subsidiary of CviLux Group, positions itself as a solution provider, assisting enterprises in fully integrating manufacturing, energy, and carbon management to build comprehensive smart carbon management and sustainability solutions. Our ECSC Smart Carbon Cloud platform integrates energy management, smart manufacturing, carbon management, and AI applications. By combining smart sensors, cloud data, and AI-driven analytics, it enables enterprises to complete organizational carbon inventories, product carbon footprint management, compliance reporting, and sustainability disclosures.

Immediate Corporate Benefits

Lower Costs

- Achieve 10-20% energy savings.
- Reduce carbon tax and penalty risks.

Increase Efficiency

- Through AI real-time monitoring and trend forecasting.
- Increase production line efficiency by 5-15%.

Compliance Assurance

- Compliant with multiple international standards, including ISO 14064, 14067, 50001.
- Meets EU CBAM requirements.

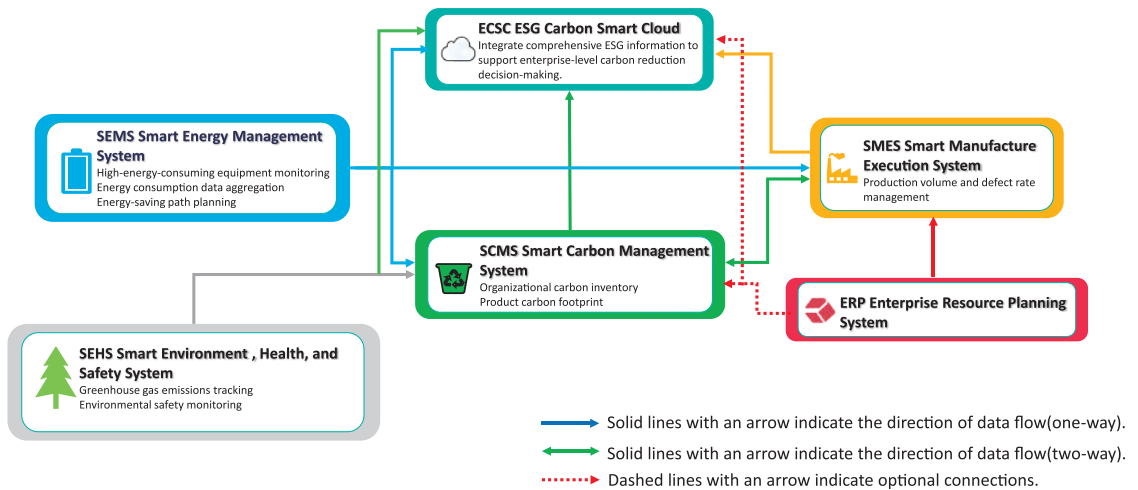
Brand Enhancement

- PCF Verification can strengthen a company's competitive position in the international green supply chain.

Sustainability Value

- Helps enterprises transition from "Carbon Neutral" to "Net Zero".

System Architecture and Module Design

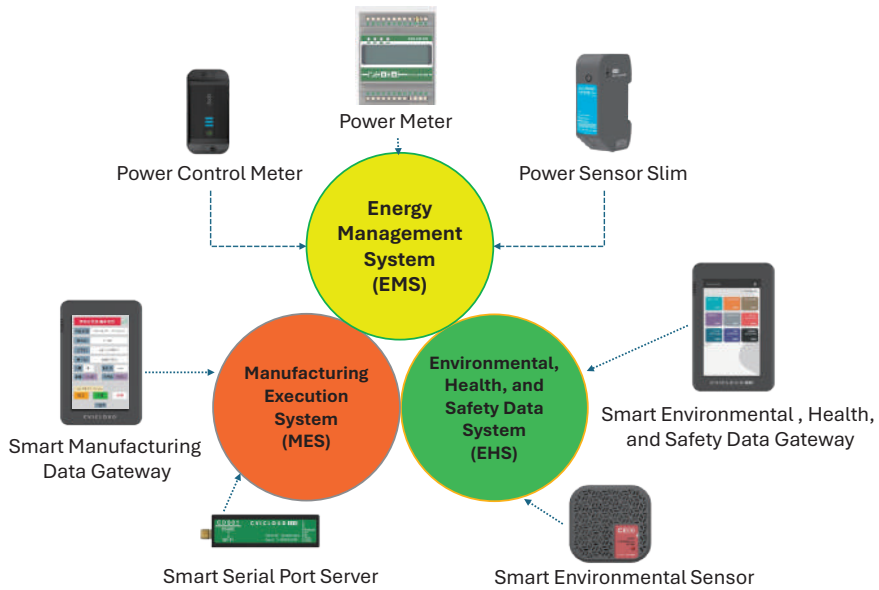


The system modules are deployed on Microsoft Azure and delivered in a SaaS model. Customers can subscribe to individual or multiple modules as needed and flexibly combine them for integrated use.

- **SMES (Smart Manufacturing Execution System):** Tracks production data in real time, supports automated work order scheduling and anomaly monitoring, helping to optimize processes and reduce carbon emissions. It can collaborate with SEMS and SQMS to enhance efficiency and quality.
- **SEMS (Smart Energy Management System):** Monitors the consumption of electricity, water, natural gas, and other energy sources, with data synchronized to the cloud. Provides multi-dimensional energy analysis charts and data comparisons, offering recommendations for energy optimization.
- **SEHS (Smart Environment, Health and Safety System):** Monitors workplace conditions (such as temperature, humidity, PM2.5, and CO₂) in real time. Supports flexible sensor integration as needed, with data synchronized to the cloud for real-time visualization and environmental management.
- **SCMS (Smart Carbon Management System) :** Integrates energy management, environmental health and safety (EHS) data management, and related indirect carbon emission data to generate organizational carbon inventory reports. It can also connect with SMES production data to calculate product carbon footprints, meeting the requirements of global supply chain customers. Supports ISO standards and provides EU CBAM report output.
- **ERP (Enterprise Resource Planning System) :** Based on enterprise requirements, ECSC system modules can interface with existing ERP systems to support fundamental data initialization and configuration.

System Architecture and Module Design

The ECSC system collects data through various smart hardware devices and supports the applications of different platform modules:



Smart Data Gateway

This gateway integrates an HMI touchscreen. Depending on the installed firmware, it can individually support applications such as SMES, SEHS, and SEMS. Equipped with RS232 and RS485 interfaces, it consolidates data from on-site sensors and Programmable Logic Controllers (PLCs) and uploads it to the cloud.



Smart Power Meter / Sensor

Includes a variety of single-phase and three-phase smart power meters, capable of monitoring key electrical parameters such as voltage, current, power, and energy consumption. Power Control Meter also support remote power control.



Smart Serial Port Server

This device enables equipment without Wi-Fi capability, equipped only with RS485 or RS232 interfaces, to be converted into TCP/IP-based network data transmission. It supports multiple communication protocols, including Modbus TCP, Modbus RTU, Modbus UDP, HTTP, and MQTT.



Smart Environmental Sensor

Includes measurements for temperature, humidity, CO, CO₂, PM2.5, formaldehyde, noise, and illumination. Data is synchronized to the cloud in real time, supporting SEHS module applications to ensure safe and comfortable living and working environments.

Application Scenarios



Smart Factory

- Automatic Collection of Production Energy Consumption and Output Data.
- Precise calculation of carbon emissions per unit of product.
- Provide comprehensive carbon neutrality solutions with planning and implementation services.



Smart Office

- Real-time Monitoring of Office Electricity Consumption Data, with Analytical and Visualized Reports.
- Tracking and Analyzing Office Carbon Emissions Data as a Key Basis for ESG Compliance Reporting.

Application Scenarios



Smart Home

- Automatic Monitoring of Household Appliance Electricity Usage Data, with Analytical and Visualized Reports.
- Tracking and Managing Household Carbon Emissions Data to Support Green Living and Achieve Carbon Neutrality Goals.



Supply Chain Management

- Tracking and Managing Carbon Emissions Across the Supply Chain to Ensure ESG Compliance and Sustainability Goals.
- Compliant with EU export regulations.

Sustainability Reporting

- Automatically generates ESG data.
- Quickly complete GRI, SASB, TCFD, and other reports.

Why Choose CviLux ECSC?



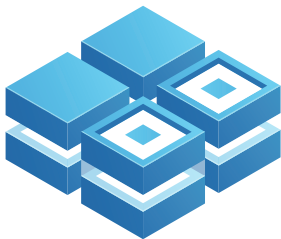
Total Solution Provider

CviCloud Technology is not just a system and hardware provider, but a solution partner. We support enterprises throughout the entire process – from requirement assessment and system implementation to ESG reporting.



Integrated Cloud Service

CviCloud ECSC provides integrated services for Energy Management, Smart Manufacturing, and Carbon Management, consolidating information from various systems and delivering integrated analytical reports on energy-saving and carbon-reduction.



Modular System

The system is highly flexible and can be seamlessly expanded with modules such as the Smart Manufacturing Execution System (SMES), Smart Energy Management System (SEMS), Smart Environment, Health and Safety Data System (SEHS), Smart Warehouse Management System (SWMS), Smart Quality Management System (SQMS), and Smart Carbon Management System (SCMS).

Why Choose CviLux ECSC?



International Standard Certification

Meets the requirements of international brands and supply chain customers, ensuring export and compliance.



Data-Driven Decisions

Through data-driven decisions, assists companies in achieving digital transformation and ESG sustainable development.

Gain a Green Competitive Advantage Now!

Marketing Sites

CviLux Corporation
CviLux USA Corporation
CviLux KOREA Corporation
CviLux Technology
(Shenzhen) Corporation
CviLux Vietnam Corporation
CviLux SDN BHD
CviLux JAPAN Office
CviLux BRAZIL Office
CviLux GERMANY Office
CviLux FRANCE Office
Allsor Electronics Co., Ltd.
Allsor Technology Corporation
CviCloud Corporation

Factory Sites

Tamshui-Taiwan
CviLux Corporation
Dongguan-China
CviLux Electronics (Dongguan) Co., Ltd
Dongguan Qunhan Electronics Co., Ltd
Suzhou-China
CviLux Technology (Suzhou) Co., Ltd
Chongqing-China
CviLux Technology (Chongqing) Co., Ltd
Lao
CviLux Lao Co., Ltd.
Vietnam
CviLux Vietnam Corporation
Malaysia
Leoco Industries Sdn Bhd



Taiwan



Qunhan



Dongguan



Suzhou



Chongqing



Lao



Vietnam



Thailand

