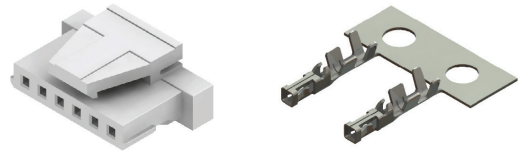
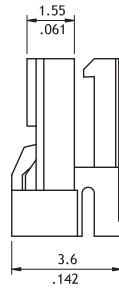
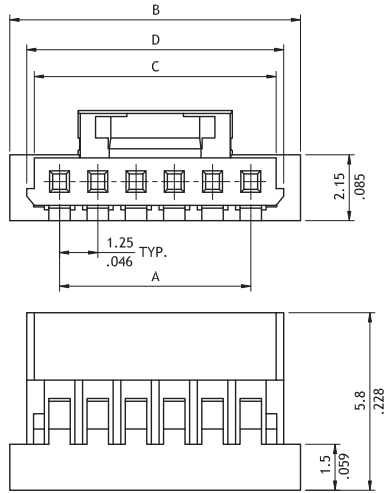


CI46 Series 1.25mm(.049") Wire to Board Connectors Housing & Terminal

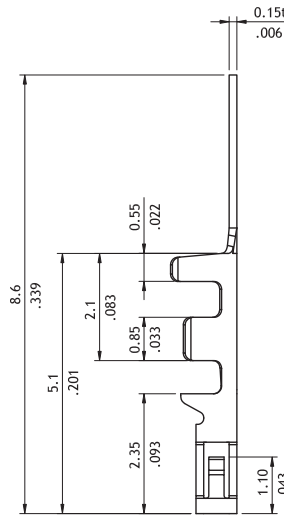
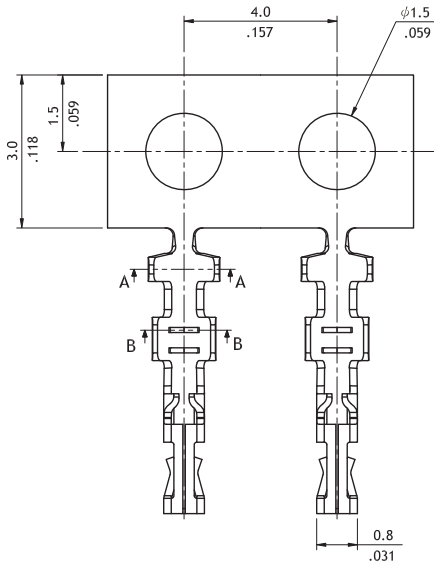
- ⊙ With locking latch provide secure mating
- ⊙ Mate with CI46 Header
- ⊙ Can be used with CI46 Crimp Clip Terminal
- ⊙ Insulator: Nylon 66 UL 94V-0, Color Nature



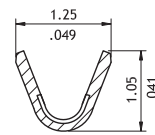
RoHS Compliant



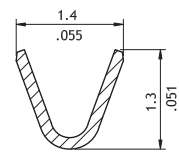
A = 1.25 x No. of Spaces
 B = A + 3.25
 C = A + 1.65
 D = A + 2.15



| Wire Range | Insulation Diameter | Reel Qty |
|-------------|---------------------|------------|
| AWG #26-#32 | 0.90 (.035) MAX. | 25,000 PCS |



SEC. B-B



SEC. A-A

Ordering Code

① C I 46 ② 20 ③ S L ④ 000

- ① Series No.
- ② No. of Circuits: 02 to 20
- ③ S = Housing
- ④ L = With Locking Latch
- ⑤ Other Options: 000 = Standard

① CI46 ② T01 ③ 1 P ④ E0

- ① Series No.
- ② Type: T01 = AWG #26 ~ #32
- ③ Plating Code: 1 = Tin over Nickel
- ④ Material: P = Phosphor Bronze
- ⑤ Other Options: E0 = Standard