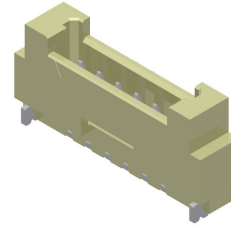


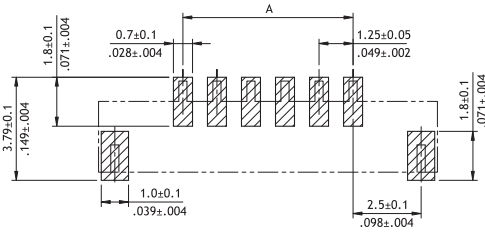
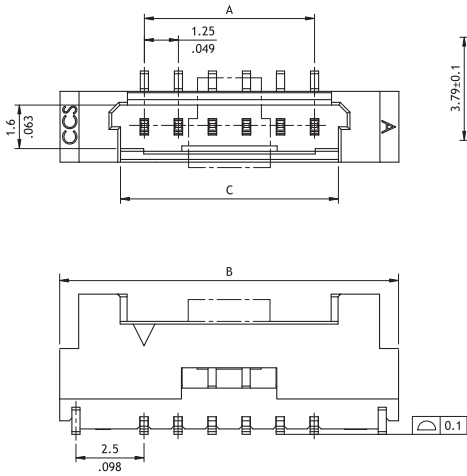
**CI46 Series 1.25mm(.049") Wire to Board Connectors SMT Headers**

- ⊙ With locks provide secure mating
- ⊙ Fixed tabs provide PCB hold-down
- ⊙ Mate with CI46 Housing
- ⊙ Insulator: High temperature plastic UL 94V-0, Color Nature

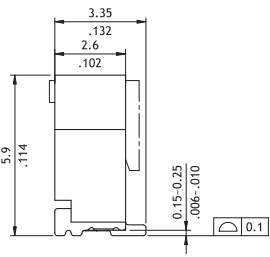


RoHS Compliant

**Top Entry**

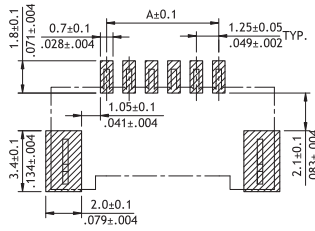
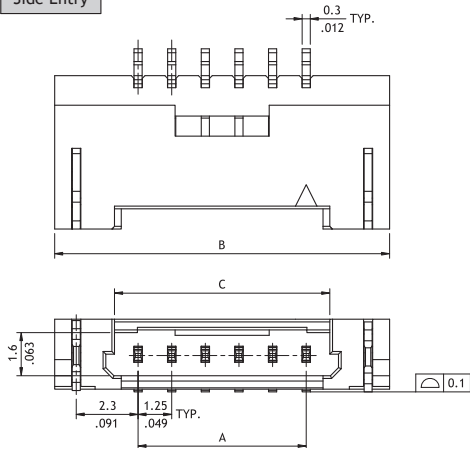


Recommended PCB Layout

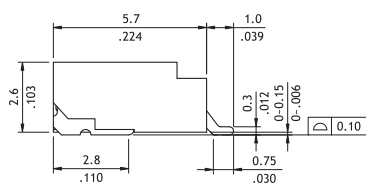


DIM. A = 1.25 x No. of Spaces  
 DIM. B = DIM. A + 6.2  
 DIM. C = DIM. A + 1.75

**Side Entry**



Recommended PCB Layout



A = 1.25 x No. of Spaces  
 B = A + 6.2  
 C = A + 1.75

**Ordering Code**

① ② ③ ④ ⑤ ⑥ ⑦ ⑧  
**C I 4 6 2 0 M 1 V R 0 - NH**

- ① Series No.
- ② No. of Circuits: 02 to 20
- ③ M = SMT Type
- ④ Plating Code :  
 1= Matte Tin plated over Nickel
- ⑤ Type: V =Top Entry  
 H=Side Entry
- ⑥ Packing Options:  
 R0 = Tape & Reel
- ⑦ Other Options:  
 0 = Standard
- ⑧ Process: -NH = For Lead Free soldering process and Halogen-Free