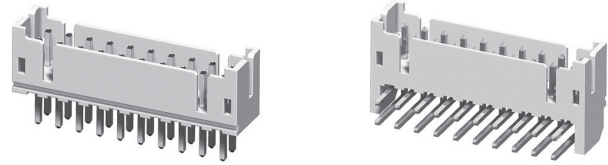


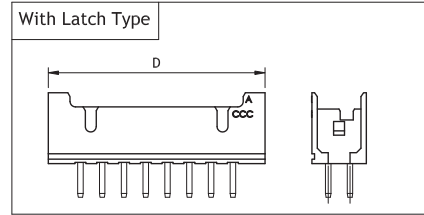
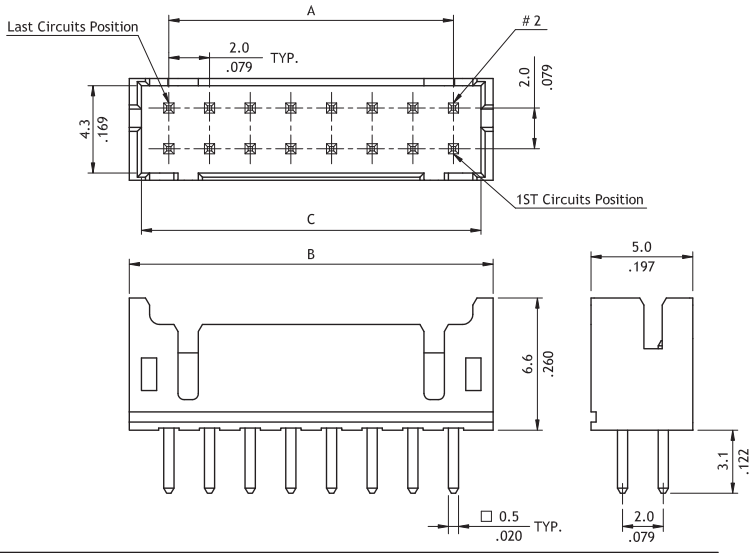
CI01 Series 2.00mm(.079") Dual Row Wire to Board Connectors DIP Headers

CI

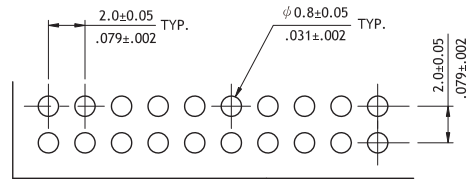
- ⊙ With locking slots
- ⊙ Mate with CI01 Dual Row Housing
- ⊙ Insulator: Polyamide UL 94V-0, Color Nature
- ⊙ With Tin plated 0.5mm square pin



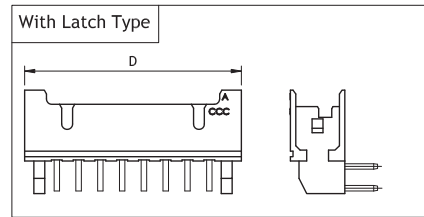
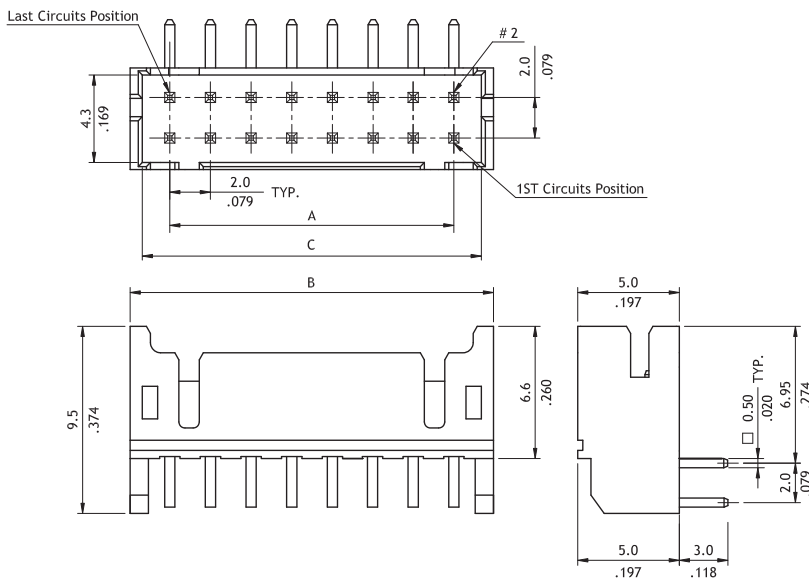
RoHS Compliant



A = 2.0 x No. of Spaces
 B = A + 3.9
 C = A + 2.7
 D = A + 5.9



Recommended PCB Layout



Ordering Code		①	②	③	④	⑤	⑥	⑦	⑧	
		CI01	34	P	1	V	D	0	-NH	
①	Series No.					⑥	D=Dual Row Header			
②	No. of Circuits: 06 to 34					⑦	Other Options: 0 = Standard			
③	P = DIP Type						L = With Locking Ramp			
④	Plating Code: 1=Matte Tin over Nickel					⑧	Process: -LF = For Lead Free soldering process			
⑤	Type: V=Straight H=Right Angle						-NH = For Lead Free soldering process and Halogen-Free			
*Special options consult manufacturer										

WIRE TO BOARD