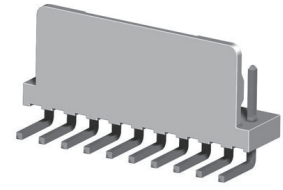
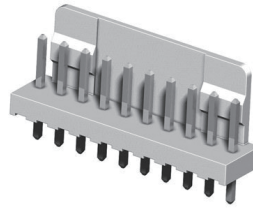


CI23 Series 2.50mm(.098") Wire to Board Connectors DIP Headers

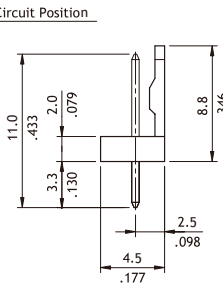
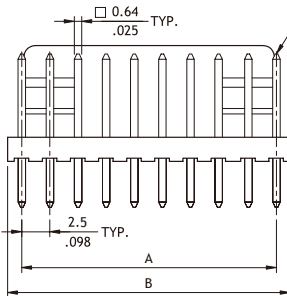
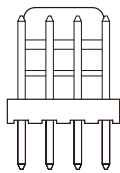
CI

- ⊙ With locking wall
- ⊙ Mate with CI23 Housing
- ⊙ Insulator: Nylon 66 UL 94V-2, Color Ivory
- ⊙ With Tin plated 0.64mm square pin

RoHS Compliant



Straight

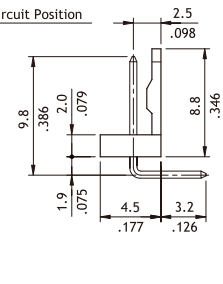
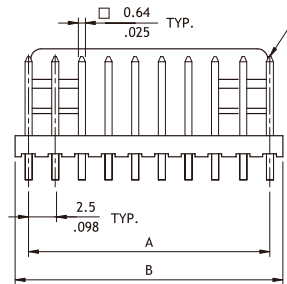
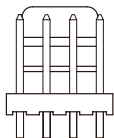
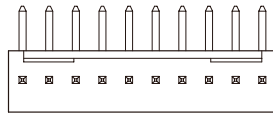
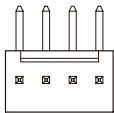


(2 Through 5 Circuits)

(6 Through 12 Circuits)

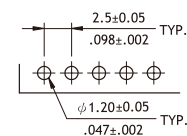
Circuits	Dimension	
	A	B
2	2.5(.098)	5.0(.197)
3	5.0(.197)	7.5(.295)
4	7.5(.295)	10.0(.394)
5	10.0(.394)	12.5(.492)
6	12.5(.492)	15.0(.591)
7	15.0(.591)	17.5(.689)
8	17.5(.689)	20.0(.787)
9	20.0(.787)	22.5(.886)
10	22.5(.886)	25.0(.984)
11	25.0(.984)	27.5(1.083)
12	27.5(1.083)	30.0(1.181)

Right Angle



(2 Through 5 Circuits)

(6 Through 12 Circuits)



Recommended PCB Layout

Ordering Code		①	②	③	④	⑤	⑥
		C	I	23	12	P	1
		V	00				
① Series No.	⑤ Type: V = Straight H = Right Angle						
② No. of Circuits: 02 to 12	⑥ Other Options: 00 = Standard *Special options consult manufacturer						
③ P = DIP Type							
④ Plating Code: 1 = Tin over Nickel							

WIRE TO BOARD