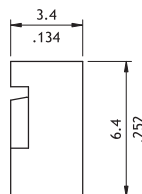
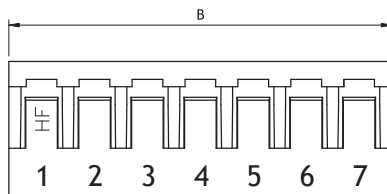
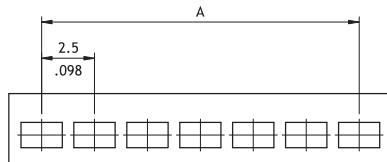
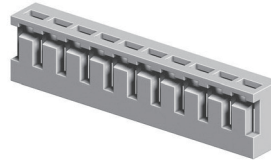


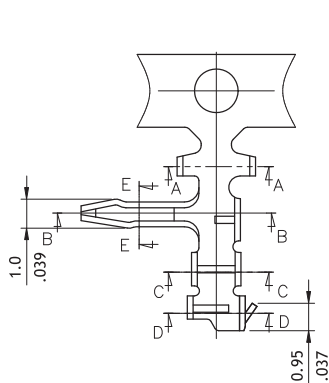
## CI27 Series 2.50mm(.098") Board In Connectors

- Low profile with locking ribs
- Can be used with CI27 Crimp Board in Terminal
- Terminal accommodated AWG #22 ~ #26
- Insulator: Nylon 66 UL 94V-0, Color Nature
- Terminal: Tin plated Phosphor Bronze

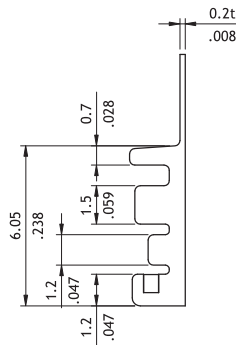
RoHS Compliant



| Circuits | Dimension   |             |
|----------|-------------|-------------|
|          | A           | B           |
| 2        | 2.5(.098)   | 5.7(.224)   |
| 3        | 5.0(.197)   | 8.2(.323)   |
| 4        | 7.5(.295)   | 10.7(.421)  |
| 5        | 10.0(.394)  | 13.2(.520)  |
| 6        | 12.5(.492)  | 15.7(.618)  |
| 7        | 15.0(.591)  | 18.2(.717)  |
| 8        | 17.5(.689)  | 20.7(.815)  |
| 9        | 20.0(.787)  | 23.2(.913)  |
| 10       | 22.5(.886)  | 25.7(1.012) |
| 11       | 25.0(.984)  | 28.2(1.110) |
| 12       | 27.5(1.083) | 30.7(1.209) |
| 13       | 30.0(1.181) | 33.2(1.307) |
| 14       | 32.5(1.280) | 35.7(1.406) |
| 15       | 35.0(1.378) | 38.2(1.504) |
| 16       | 37.5(1.476) | 40.6(1.598) |

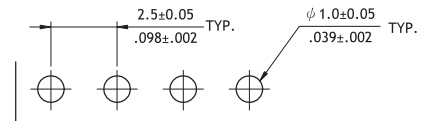


SEC.: A-A

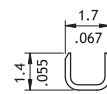


SEC.: B-B

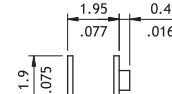
| Wire Range  | Insulation Diameter | Reel Qty  |
|-------------|---------------------|-----------|
| AWG #22-#26 | 1.6 (.063) MAX.     | 7,000 PCS |



Recommended PCB Layout



SEC.: C-C



SEC.: D-D



SEC.: E-E

## Ordering Code

① ② ③ ④  
C I 27 1 6 S 0 0 0 0

- ① Series No.
  - ② No. of Circuits: 02 to 16
  - ③ S = Housing
  - ④ Other Options: 0000 = Standard
- \*Special options consult manufacturer

① ② ③ ④ ⑤  
C I 27 T 0 2 1 P E H

- ① Series No.
- ② Type: T02 = AWG #22 ~ #26
- ③ Plating Code: 1 = Tin over Nickel
- ④ Material: P = Phosphor Bronze
- ⑤ Other Options: EH = Right Angle Terminal