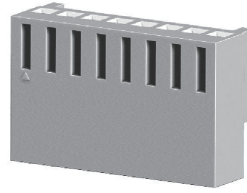
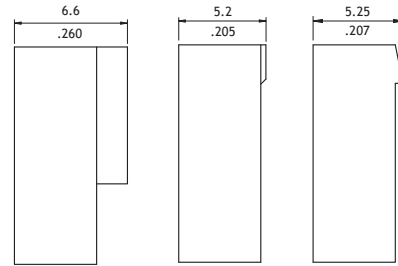
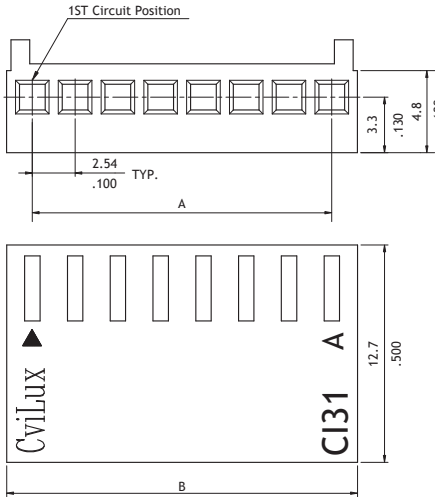


CI31 Series 2.54mm(.100") Wire to Board Connectors Housing & Terminal

- ⊙ With locking ramps and ribs
- ⊙ Mate with CI31, CH31, CI83 header
- ⊙ Can be used with CI31 crimp clip terminal
- ⊙ Insulator: Nylon 66 UL 94V-2, Color Ivory
- ⊙ Terminal: Tin plated Brass or Phosphor Bronze

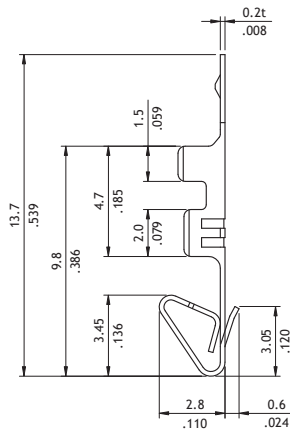
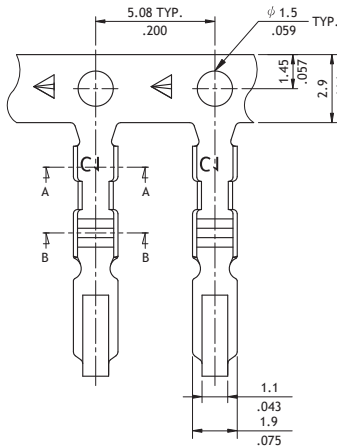


RoHS Compliant HF

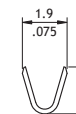


P/N:CI31**S0000 P/N:CI31**SNP00 P/N:CI31**S00R0

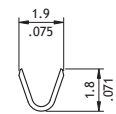
Circuits	Dimension	
	A	B
2	2.54(.100)	5.6(.220)
3	5.08(.200)	8.1(.319)
4	7.62(.300)	10.7(.421)
5	10.16(.400)	13.2(.520)
6	12.70(.500)	15.8(.622)
7	15.24(.600)	18.3(.720)
8	17.78(.700)	20.8(.819)
9	20.32(.800)	23.4(.921)
10	22.86(.900)	25.9(1.020)
11	25.40(1.000)	28.5(1.122)
12	27.94(1.100)	31.0(1.220)
13	30.48(1.200)	33.5(1.319)
14	33.02(1.300)	36.1(1.421)
15	35.56(1.400)	38.6(1.520)
16	38.10(1.500)	41.2(1.622)
17	40.64(1.600)	43.7(1.720)
18	43.18(1.700)	46.2(1.819)
19	45.72(1.800)	48.8(1.921)
20	48.26(1.900)	51.3(2.020)



Wire Range	Insulation Diameter	Reel Q'ty
AWG #22-#28	1.5 (.059) MAX.	10,000 PCS.



SEC: A-A



SEC: B-B

Ordering Code

① ② ③ ④
C I 3 1 2 0 S 0 0 0 0

- ① Series No.
- ② No. of Circuits: 02 to 20
- ③ S = Housing
- ④ Other Options:
0000 = With Polarizing Ribs (Long)
00R0 = With Polarizing Ribs (Short)
NP00 = Without Polarizing Rib
*Special options consult manufacturer

① ② ③ ④ ⑤
C I 3 1 T 0 2 1 B E 0

- ① Series No.
- ② Type: T02 = AWG #22 ~ #28
- ③ Plating Code: 1 = Tin over Nickel
- ④ Material: B = Brass
P = Phosphor Bronze
- ⑤ Other Options: E0 = Standard