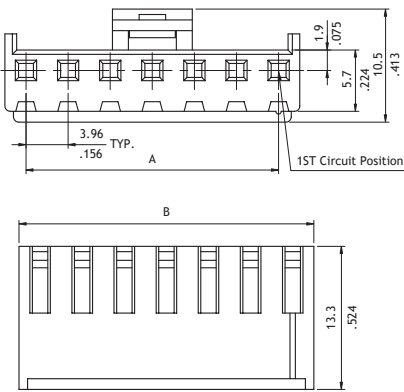
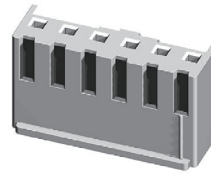


CI52 Series 3.96mm(.156") Wire to Board Connectors Housing & Terminal

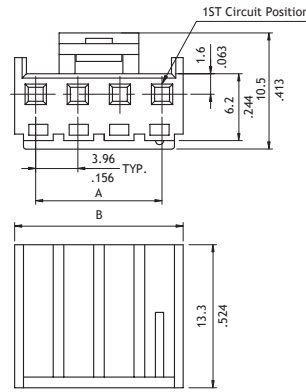
- With locking latch
- Mate with CI52 header
- Can be used with CI52 crimp clip terminal
- Insulator: Nylon 66 UL 94V-0 , Color Nature
- Terminal: Tin plated Brass or Phosphor Bronze

RoHS Compliant

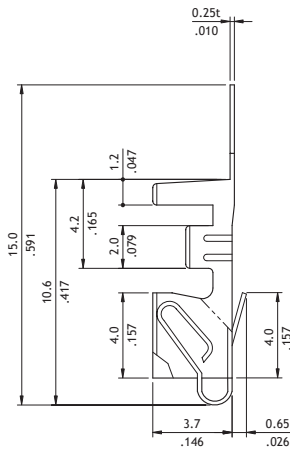
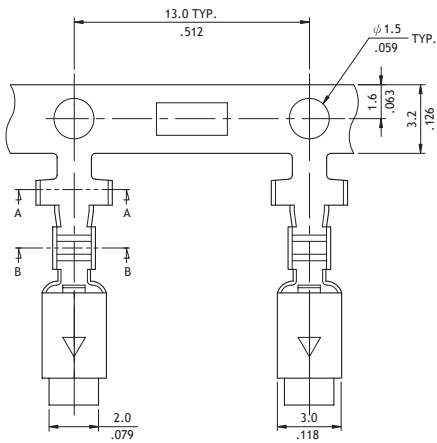


Circuits	Dimension	
	A	B
2	3.96(.156)	7.9(.311)
3	7.92(.312)	11.9(.469)
4	11.88(.468)	15.8(.622)
5	15.84(.624)	19.8(.780)
6	19.80(.780)	23.8(.937)
7	23.76(.935)	27.7(1.091)
8	27.72(1.091)	31.7(1.248)
9	31.68(1.247)	35.6(1.402)
10	35.64(1.403)	39.6(1.559)
11	39.60(1.559)	43.6(1.717)
12	43.56(1.715)	47.5(1.870)

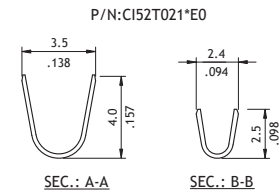
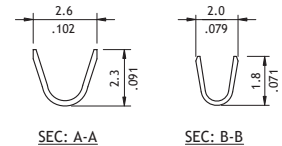
P/N CI52\*\*SM000



Circuits	Dimension	
	A	B
2	3.96(.156)	7.92(.312)
3	7.92(.312)	11.88(.468)
4	11.88(.468)	15.84(.634)



Part No.	Wire Range	Insulation Diameter	Reel Qty
CI52T021*E0	AWG #22-#28	1.90 (.075) MAX.	3,500 PCS
CI52T031*E0	AWG #18-#22	2.70 (.106) MAX.	3,500 PCS



Ordering Code

① C ② 15 ③ 2 ④ 12 S ⑤ 0 0 0 0

- ① Series No.
- ② No. of Circuits: 02 to 12
- ③ S = Housing
- ④ Other Options:  
0000 = Standard  
M000 = Special Type  
\*Special options consult manufacturer

① C ② 15 ③ T ④ 0 3 ⑤ 1 B E 0

- ① Series No.
- ② Type: T02 = AWG #22 ~ #28  
T03 = AWG #18 ~ #22
- ③ Plating Code: 1 = Tin over Nickel
- ④ Material: B = Brass ; P = Phosphor Bronze
- ⑤ Other Options: E0 = Standard