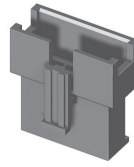
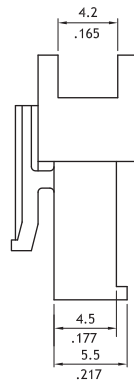
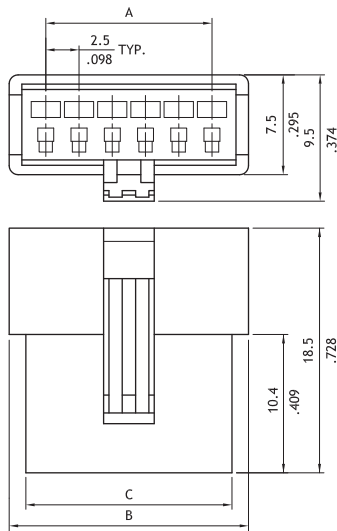


CP06 Series 2.50mm(.098") Plug Connectors

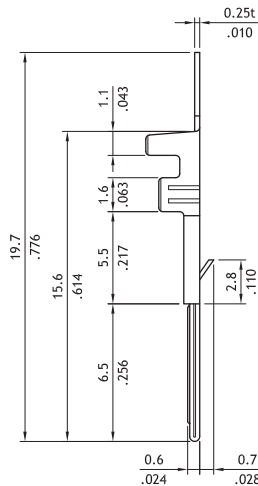
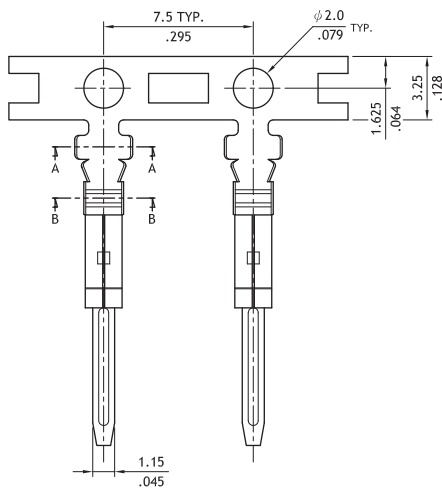
- ⊙ With locking latch mounting ears
- ⊙ Available in 2 through 12 circuits
- ⊙ Can be used CP06 Crimp terminal
- ⊙ Nylon 66 UL 94V-2, Color Black



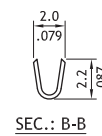
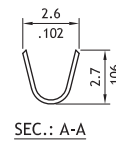
RoHS Compliant



Circuits	Dimension		
	A	B	C
2	2.5(.098)	8.2(.323)	5.5(.216)
3	5.0(.197)	10.7(.421)	8.0(.315)
4	7.5(.295)	13.2(.519)	10.5(.413)
5	10.0(.394)	15.7(.618)	13.0(.512)
6	12.5(.492)	18.2(.717)	15.5(.610)
7	15.0(.591)	20.7(.815)	18.0(.709)
8	17.5(.689)	23.2(.915)	20.5(.807)
9	20.0(.787)	25.7(1.012)	23.0(.905)
10	22.5(.886)	28.2(1.110)	25.5(1.004)
11	25.0(.984)	30.7(1.209)	28.0(1.102)
12	27.5(1.083)	33.2(1.307)	30.5(1.201)



Wire Range	Insulation Diameter	Reel Qty
AWG #22-#28	1.70 (.067) MAX.	7000 PCS.



Ordering Code

① CP 06 ② 12 ③ P ④ 001 ⑤ 0

- ① Series No.
 - ② No. of Circuits: 02 to 12
 - ③ Type: P = Plug
 - ④ Color: 001 = Color Black
 - ⑤ Other Options: 0 = Standard
- *Special options consult manufacturer

① CP 06 ② T02 ③ 1 ④ B ⑤ EP

- ① Series No.
- ② Wire Range: T02 = AWG #22 ~ #28
- ③ Plating: 1 = Tin over Nickel
- ④ Material: B = Brass
- ⑤ Style: EP = Plug Terminal