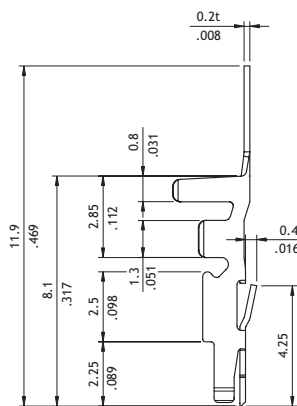
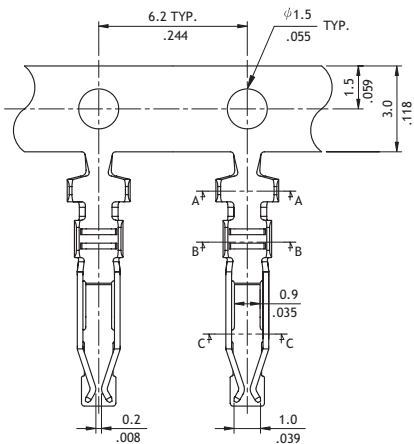
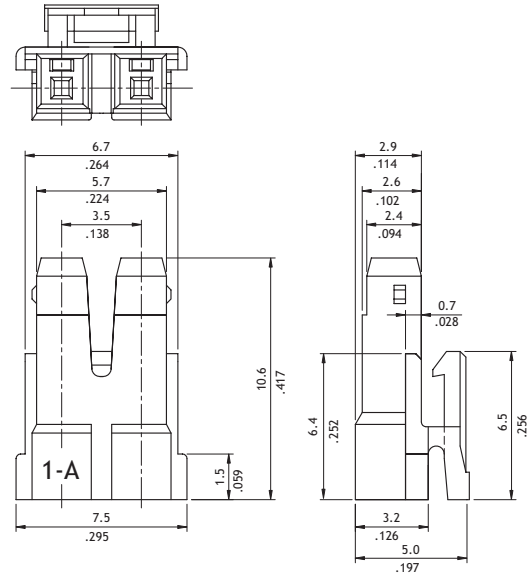
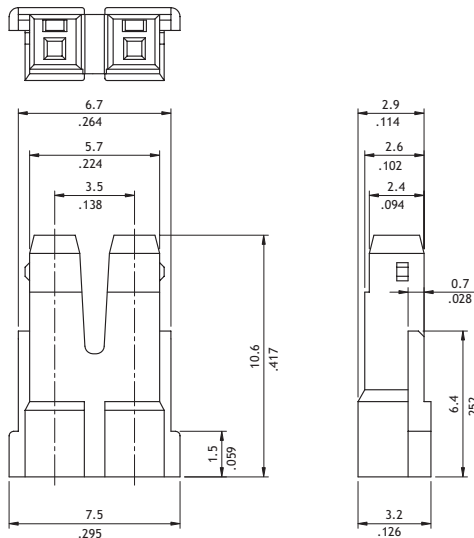
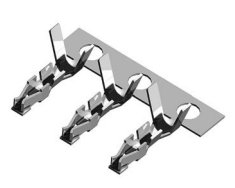
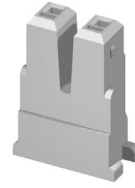
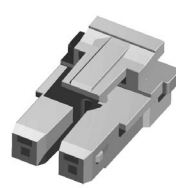


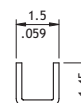
CP05 Series 3.50mm (.138") High Voltage Receptacle Connectors

- Low profile with high withstanding voltage
- Mate with CP05 Header
- Can be used CP05 Crimp Clip Terminal
- Terminal accommodated AWG #24 ~ #28
- Insulator: Nylon 66 UL 94V-0, Color Nature

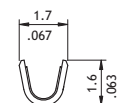
RoHS Compliant



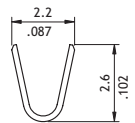
Wire Range	Insulation Diameter	Reel Q'ty
AWG #24-#28	1.45 (.057) MAX.	10,000 PCS.



SEC: C-C



SEC: B-B



SEC: A-A

Ordering Code

1 2 3 4 5
CP05 02 S 0 000

- 1 Series No.
- 2 No. of Circuits: 02
- 3 S = Housing
- 4 Type: L = With Latch
0 = Without Latch
- 5 Other Options: 000 = Color Nature

1 2 3 4 5 6
CP05 T02 1 P E 0

- 1 Series No.
- 2 Wire Range: T02 = AWG #24 ~ #28
- 3 Plating: 1 = Tin over Nickel
- 4 Material: P = Phosphor Bronze
- 5 Plating method: E = Pre-tinned
- 6 Other Options: 0 = Standard