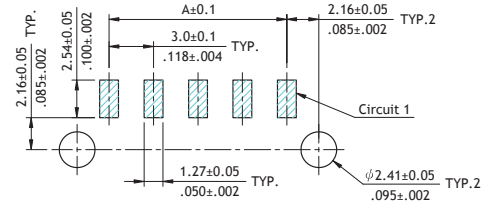
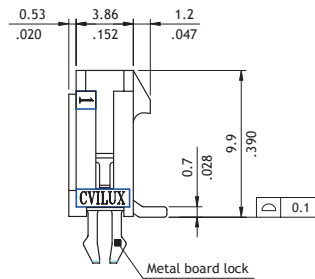
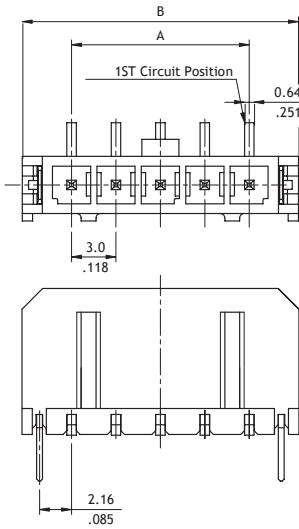
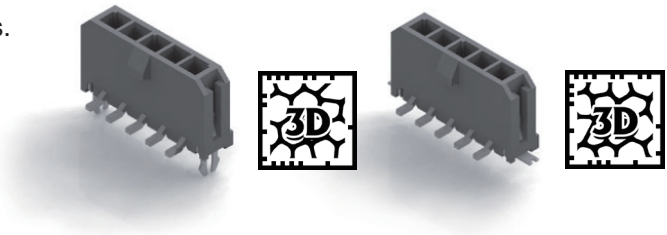


# CP35 Series 3.00mm(.118") Single Row Top Entry SMT Headers

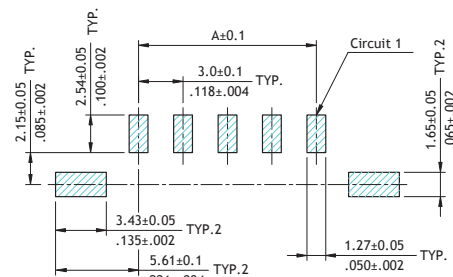
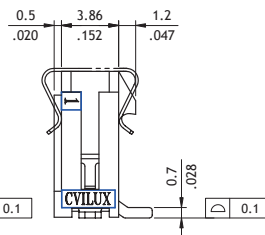
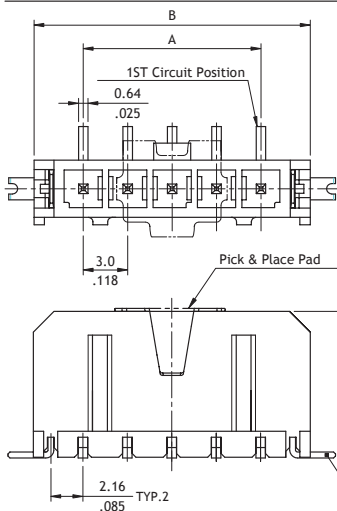
- ⊙ Mates with CP35 Connector
- ⊙ Shrouded header with board locks or fixed tabs.
- ⊙ With metal pick and place Pad
- ⊙ High temperature plastic for SMT process

RoHS Compliant



Recommended PCB Layout

CIRCUITS	DIM.A	DIM.B
2	3.00(.118)	9.65(.380)
3	6.00(.236)	12.65(.498)
4	9.00(.354)	15.65(.616)
5	12.00(.472)	18.65(.734)
6	15.00(.591)	21.65(.852)
7	18.00(.709)	24.65(.970)
8	21.00(.827)	27.65(1.089)
9	24.00(.945)	30.65(1.207)
10	27.00(1.063)	33.65(1.325)
11	30.00(1.181)	36.65(1.443)
12	33.00(1.299)	39.65(1.561)



Recommended PCB Layout

## Ordering Code

① ② ③ ④ ⑤ ⑥ ⑦ ⑧ ⑨  
**CP 3 5 1 2 P 1 V S 0 - S - NH**

- ① Series No.
- ② No. of Circuits: 02 to 12
- ③ P = Plug
- ④ Plating: 1 = Matte Tin over Nickel  
\*Optional plating available but MOQ requested
- ⑤ Contact Type: V = Top Entry
- ⑥ Mount Type: S = SMT Type

- ⑦ Other Options:  
0 = With Metal board locks (Standard)  
T = With Fixed Tabs  
(Available for Tape & Reel)
- ⑧ S= Single Row Header
- ⑨ Process: -LF = For Lead Free soldering process  
-NH = For Lead Free soldering process and Halogen-Free