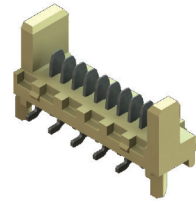


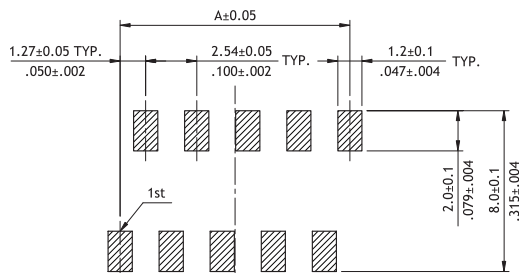
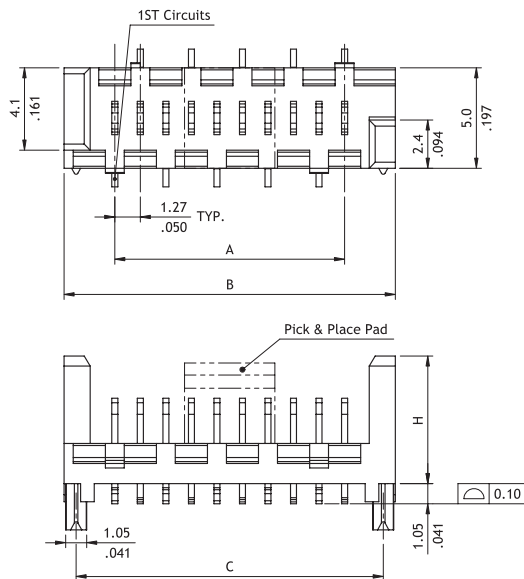
CA35 Series 1.27mm(.050") Male SMT Type Connectors

- ☉ Mate with CA33 connectors
- ☉ Insulator: High temperature plastic UL 94V-0, Nature

RoHS Compliant

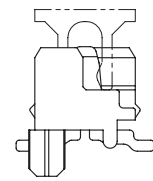
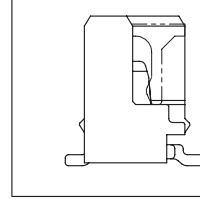


P/N	CA35**M10RP-NH
-----	----------------

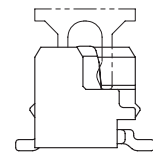


P C B Layout
Headers Without Plastic Pegs

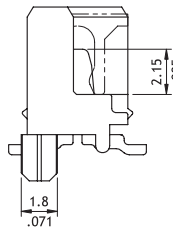
P/N	CA35**M10RE-NH	P/N	CA35**M10RD-NH
-----	----------------	-----	----------------



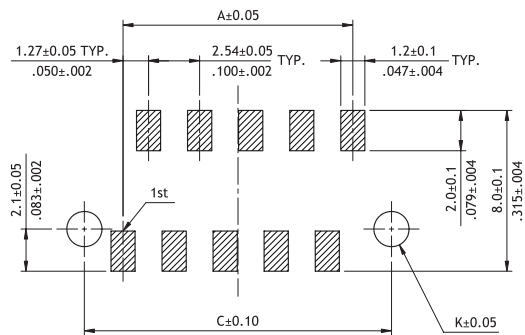
P/N	CA35**M10RG-NH
-----	----------------



A = 1.27 x No. of Spaces
B = A + 5.05
C = A + 3.85



Transition Fit With P.C.B Pegs	K = 1.75
Clearance Fit With P.C.B Pegs	K = 2.00



P C B Layout
Headers With Plastic Pegs

Ordering Code

① ② ③ ④ ⑤ ⑥ ⑦ ⑧
C A 3 5 2 6 M 1 1 R P - NH

- ① Series No.
- ② No. of Circuits: 04 to 26
- ③ Contact Type:
M = SMT Type
- ④ Plating Code:
1 = Matte Tin over Nickel

- ⑤ Color: 0 = Nature
- ⑥ Packing Options:
R = Tape & Reel
(With pick & place pad)
T = Tube
0 = Bags

- ⑦ Other Options:
G = Without positioning pegs, H = 4.10mm
D = With positioning pegs, H = 4.10mm
E = Without positioning pegs, H = 6.40mm
P = With positioning pegs, H = 6.40mm
- ⑧ Process: -NH = For Lead Free IR Process and Halogen-Free