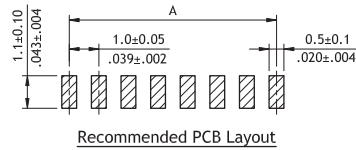


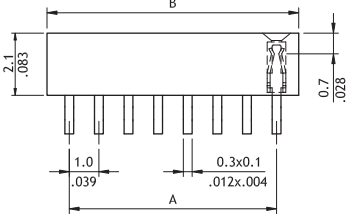
**CB03 Series 1.00mm(.039") SMT Type Single Row Pin Headers**

☉ Mate with CH07 series

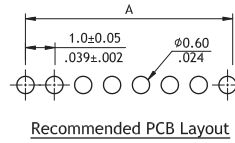
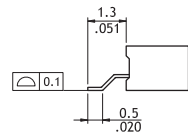
RoHS Compliant



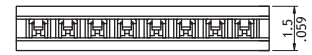
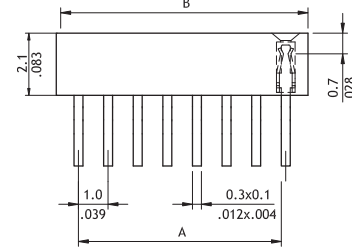
Recommended PCB Layout



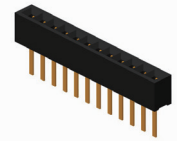
A = 1.0\* No. of Spaces  
B = A + 1.5



Recommended PCB Layout



A = 1.0\* No. of Spaces  
B = A + 1.5



**NEW**

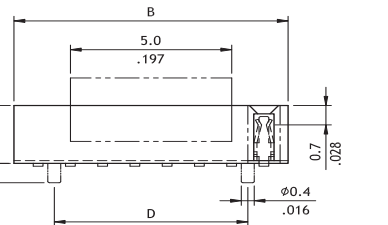
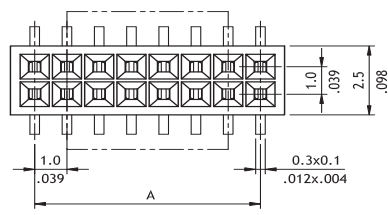
**Ordering Code**

①	②	③	④	⑤	⑥	⑦
CB03	50	2	S	1	00	- NH

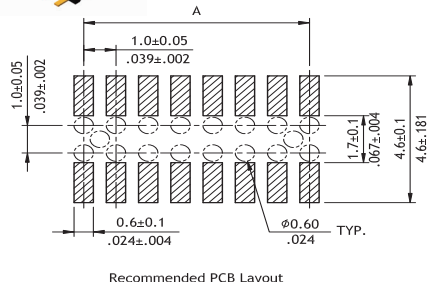
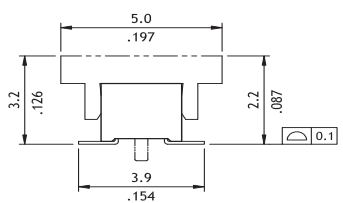
- ① Series No.
- ② No. of Circuits: 02 to 50
- ③ Plating Code:  
2 = Gold flash over Nickel
- ④ Tail Style: S = SMT Type  
V = Straight DIP Type
- ⑤ Color: 1 = Black
- ⑥ Other Options:  
00 = Standard
- ⑦ Process: -NH = For Lead Free IR process and Halogen-Free

**CB12 Series 1.00mm(.039") Dual Row Female Headers**

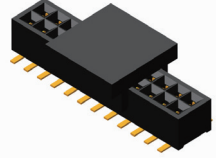
☉ Mate with CH07 series



A = 1.0\* No. of Spaces  
B = A + 1.5  
D = A + 2.0



Recommended PCB Layout



**NEW**

**Ordering Code**

①	②	③	④	⑤	⑥	⑦	⑧
CB12	36	2	M	1	00	- R	P

- ① Series No.
- ② No. of Circuits: 06 to 100
- ③ Plating Code:  
2 = Gold flash over 1.27µm (50µ")Nickel
- ④ Tail Style: M = SMT Type
- ⑤ Color: 1 = Black
- ⑥ Other Options: 00 = Standard
- ⑦ Packing Options:  
R = Tape & Reel
- ⑧ Pegs Options:  
0 = Without Pad & Peg  
P = With Pad & Without Peg