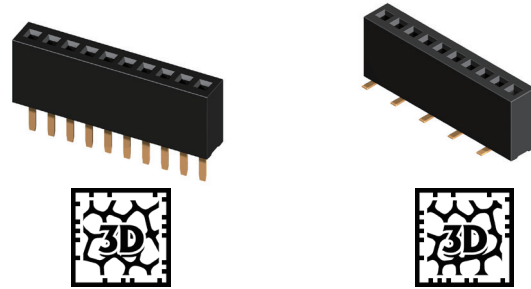


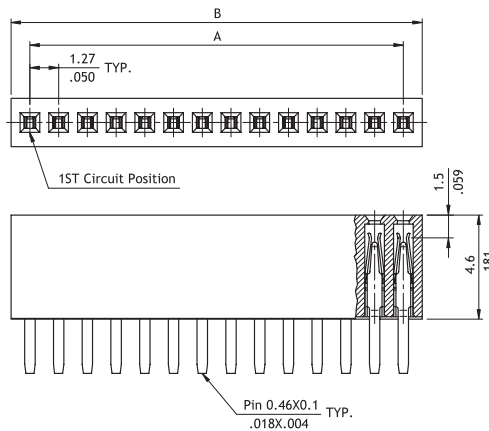
## CB01 Series 1.27mm(.050") Single Row Female Headers

◎ Mates with CH01, CH02 and CH03 series

RoHS Compliant  

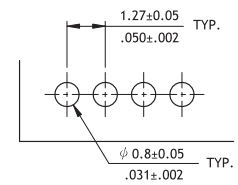
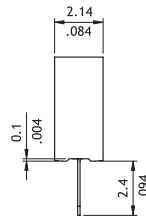


P/N CB01\*\*2D100-NH



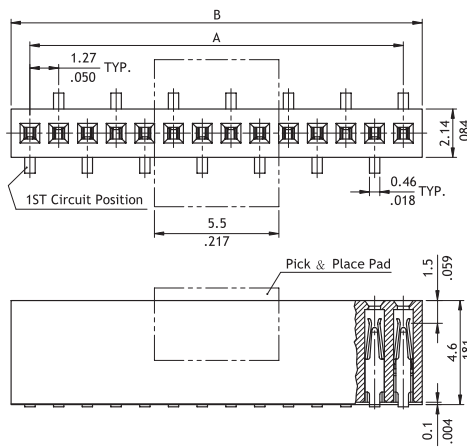
$$A = 1.27 * \text{No. of Spaces}$$

$$B = A + 1.67$$



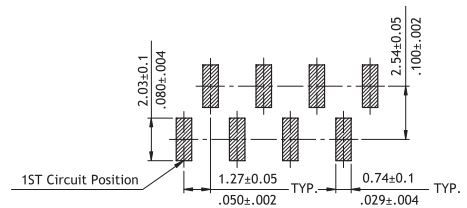
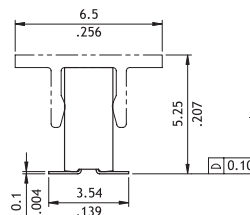
Recommended PCB Layout

P/N CB01\*\*2M100-2\*-NH



$$A = 1.27 * \text{No. of Spaces}$$

$$B = A + 1.67$$



Recommended PCB Layout

## Ordering Code

① ② ③ ④ ⑤ ⑥ ⑦ ⑧ ⑨  
CB 0 1 5 0 2 M 1 0 0 - 2 0 - NH

- ① Series No.
- ② No. of Circuits: 04 to 50
- ③ Plating Code: 2 = Gold flash over Nickel
- ④ Tail Style: M = SMT Type  
D = DIP Type
- ⑤ Color: 1 = Black
- ⑥ Other Options: 00 = Standard

- ⑦ Mating Header Pin Size:  
2 = 0.4mm Square Pin
- ⑧ Packing Options:  
0 = Without Pick & Place Pad (Tube)  
P = With Pick & Place Pad (Tape & Reel)  
\*Code 7 and 8 for SMT Type only
- ⑨ Process: -NH = For Lead Free IR process and Halogen-Free