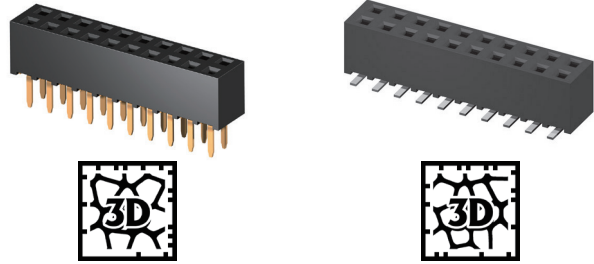


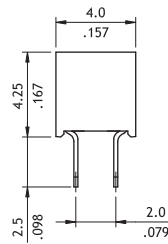
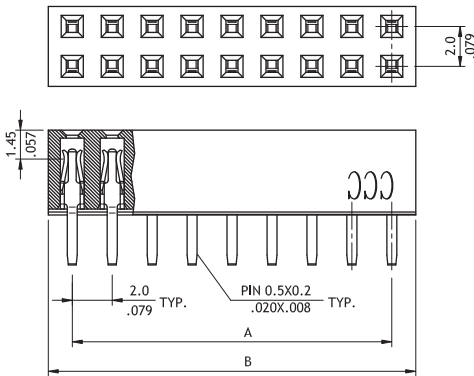
**CB74 Series 2.0mm(.079") Dual Row Female Headers**

⊙ Mates with CH71, CH72 and CH75 series

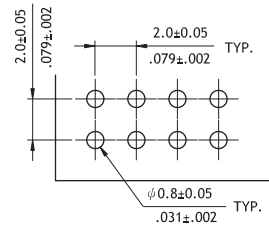
RoHS Compliant



P/N CB74\*\*2V100-NH

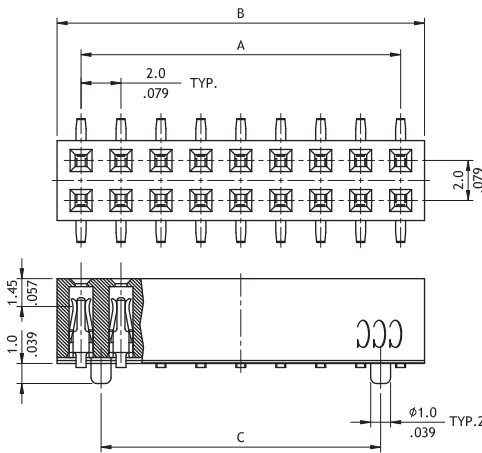


A = 2.0 \* No. of Spaces  
B = A + 2.4

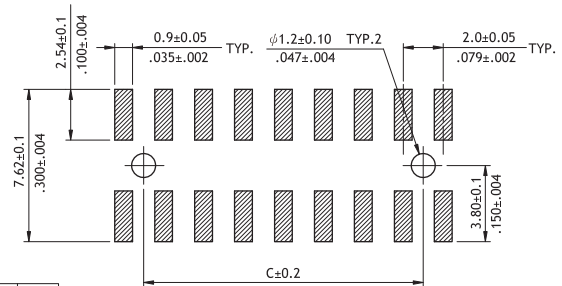


Recommended PCB Layout

P/N CB74\*\*2M100-NH



A = 2.0 \* No. of Spaces  
B = A + 2.4  
C = A - 2.0



Recommended PCB Layout

**Ordering Code**

① CB 74 ② 80 ③ 2 ④ M ⑤ 1 ⑥ 00 - ⑦ NH

- ① Series No.
- ② No. of Circuits: 04 to 80
- ③ Plating Code:  
2 = Gold flash over Nickel
- ④ Tail Style:  
V = Top Entry DIP Type  
M = Top Entry SMT Type

- ⑤ Color: 1 = Black
- ⑥ Other Options:  
00 = Standard  
\*Special options consult manufacturer
- ⑦ Process: -NH = For Lead Free IR process and Halogen-Free