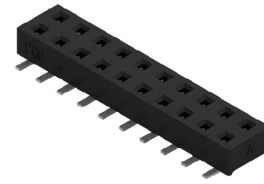
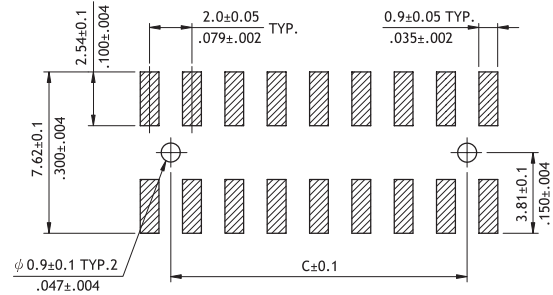
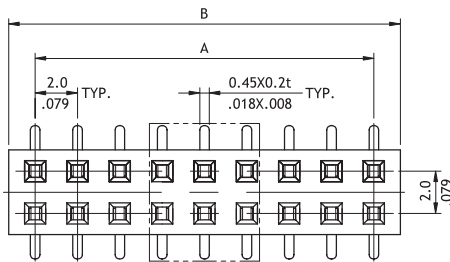


CB76 Series 2.0mm(.079") Dual Row Female Headers

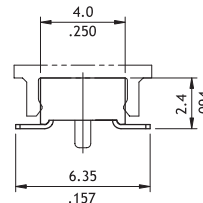
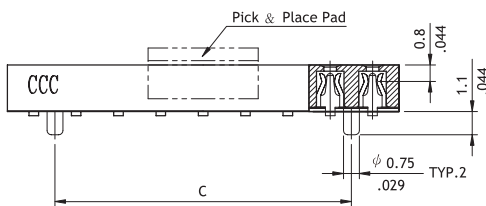
☉ Mate with CH71, CH72 and CH75 series



RoHS Compliant



Recommended PCB Layout



A = 2.0 * No. of Spaces
 B = A + 2.5
 C = A - 2.0

Ordering Code

① ② ③ ④ ⑤ ⑥ ⑦ ⑧
CB 7 6 8 0 2 M 1 0 0 - NH

- ① Series No.
- ② No. of Circuits: 04 to 80
- ③ Plating Code:
2 = Gold flash over Nickel
- ④ Tail Style: M = SMT Type
- ⑤ Color: 1 = Black
- ⑥ Pegs Options:
0 = With Pegs
1 = Without Peg
- ⑦ Packing Options:
0 = Tube packing
R = Tape & Reel (With Pick & Place Pad)
- ⑧ Process: -NH = For Lead Free IR process and Halogen-Free