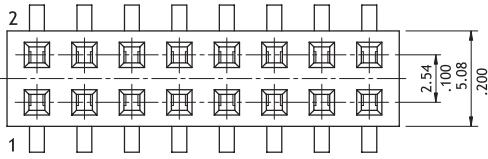
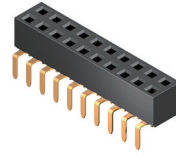


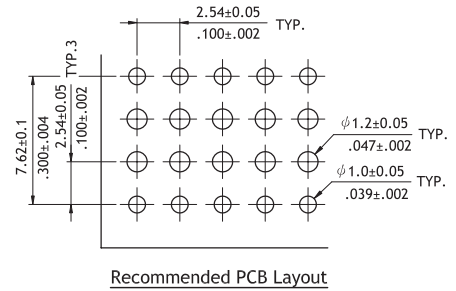
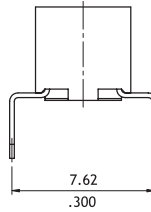
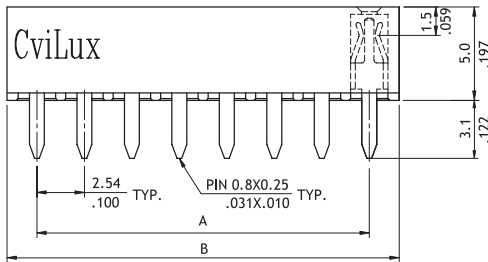
CB83 Series 2.54mm(.100") Dual Row Female Headers

☉ Mates with CH81, CH84 and CH85 series

RoHS Compliant



$A = 2.54 * \text{No. of Spaces}$
 $B = A + 3.2$



Ordering Code

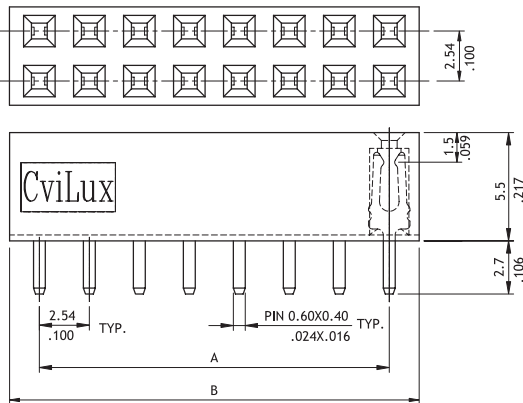
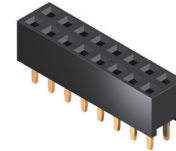
①	②	③	④	⑤	⑥
CB83	80	2	R	1	00

- ① Series No.
- ② No. of Circuits: 04 to 80
- ③ Plating Code:
2 = Gold flash over Nickel
- ④ Tail Style: R = Dual Entries
- ⑤ Color: 1 = Black
- ⑥ Other Options:
00 = Standard
*Special options consult manufacturer

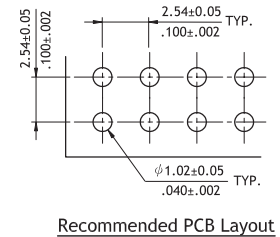
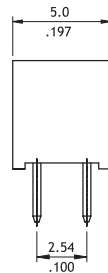
CB85 Series 2.54mm(.100") Dual Row Female Headers

☉ Mates with CH81, CH84 and CH85 series

RoHS Compliant



$A = 2.54 * \text{No. of Spaces}$
 $B = A + 3.0$



Ordering Code

①	②	③	④	⑤	⑥
CB85	80	2	V	1	00

- ① Series No.
- ② No. of Circuits: 04 to 80
- ③ Plating Code: 2 = Gold flash over Nickel
- ④ Tail Style: V = Vertical
- ⑤ Color: 1 = Black
- ⑥ Other Options:
00 = Standard
* Special options consult manufacturer