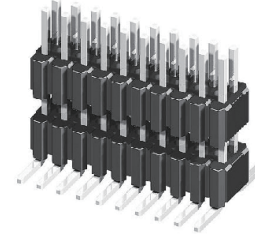
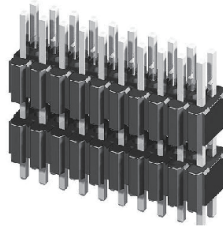


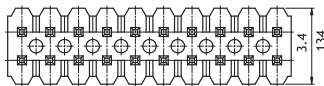
**CH57 Series 1.27mm(.050") Dual Row Dual Bodies Pin Headers**

☉ Mate with CB50 and CBC1 series

RoHS Compliant

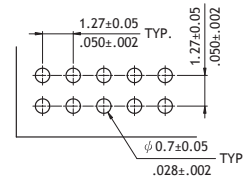
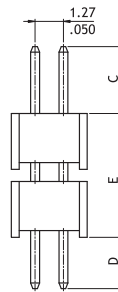
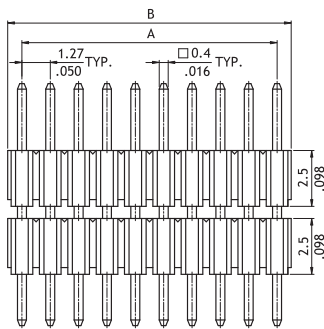


P/N CH57\*\*2V100



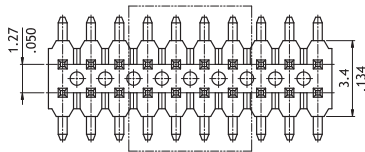
A = 1.27 X No. of Spaces  
 B = A + 1.27  
 Pin overall length 20.0mm max.

Option Code	Pin Dimension		
	C	D	E
00	3.0(.118)	2.3(.091)	5.0(.197)



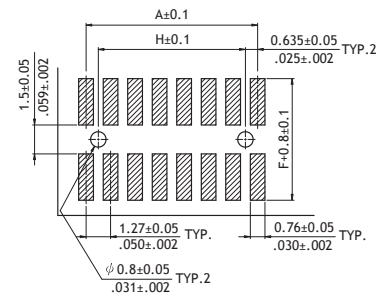
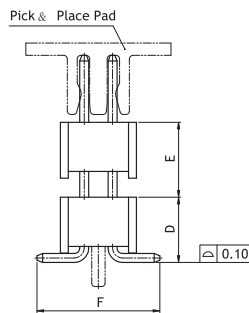
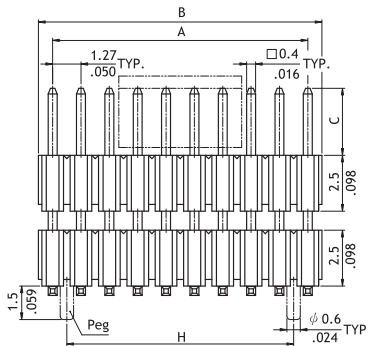
Recommended PCB Layout

P/N CH57\*\*2M100-\*\*



A = 1.27 X No. of Spaces  
 B = A + 1.27  
 H = A - 1.27

Option Code	Pin Dimension			
	C	D	E	F
00	3.0(.118)	2.92(.115)	2.5(.098)	5.5(.217)



Recommended PCB Layout

**Ordering Code**

① CH 57 ② X1 ③ 2 ④ M ⑤ 1 ⑥ 00 - ⑦ 0 ⑧ 0

- ① Series No.
- ② No. of Circuits:  
06 to 100 (X1 = 100)
- ③ Plating Code:  
2 = Gold flash over Nickel
- ④ Tail & Mounting Style:  
V = Vertical DIP Type  
M = Vertical SMT Type

- ⑤ Insulator Material & Color:  
1 = Nylon 6T, Color Black
- ⑥ Other Options:  
00 = Standard  
\*See option code table  
\*Consult manufacturer for customized pin length

- ⑦ Insulator Material & Color:  
0 = Without Peg  
P = With Pegs
- ⑧ Packing Options:  
0 = Without Pick & Place Pad (Tube)  
P = With Pick & Place Pad (Tape & Reel)  
\*Code 7 and 8 for SMT Type only