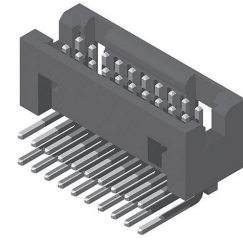
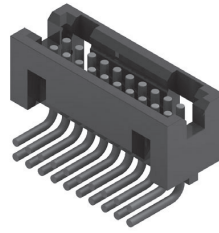


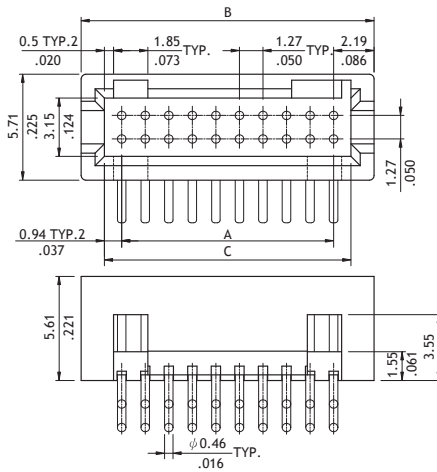
CHC2 Series 1.27mm(.050") Dual Row Pin Headers

☉ Mate with CBC1 series

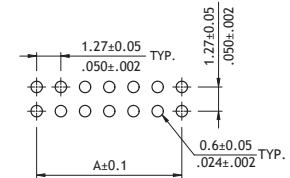
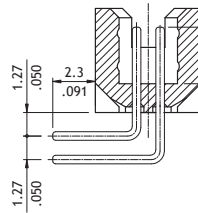
RoHS Compliant



P/N CHC2\*\*\*H100-10

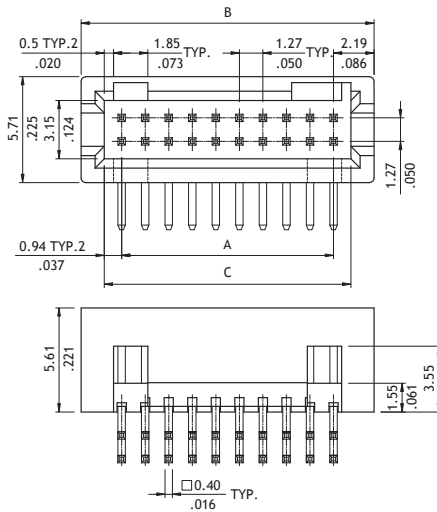


A = 1.27 X No. of Spaces  
 B = A + 4.38  
 C = A + 1.88

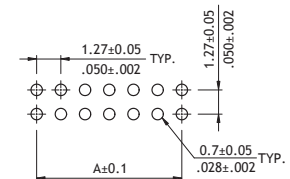
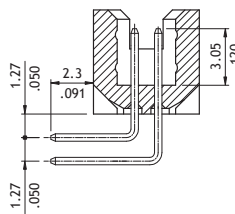


Recommended PCB Layout

P/N CHC2\*\*\*H100-20



A = 1.27 X No. of Spaces  
 B = A + 4.38  
 C = A + 1.88



Recommended PCB Layout

Ordering Code

① CHC2 ② X1 ③ 2 ④ H ⑤ 1 ⑥ 00 - ⑦ 10

- ① Series No.
- ② No. of Circuits: 06 to 100 (X1 = 100)
- ③ Plating Code: 2 = Gold flash over Nickel
- ④ Tail & Mounting Style:  
H = Right Angle DIP Type
- ⑤ Insulator Material & Color: 1 = Nylon 6T, Color Black
- ⑥ Other Options: 00 = Standard  
\*See option code table  
\*Consult manufacturer for customized pin length
- ⑦ Pin Size:  
10 = 0.46mm Round Pin  
20 = 0.4mm Square Pin