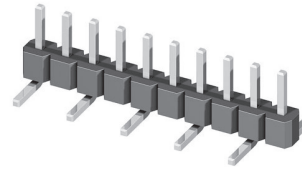


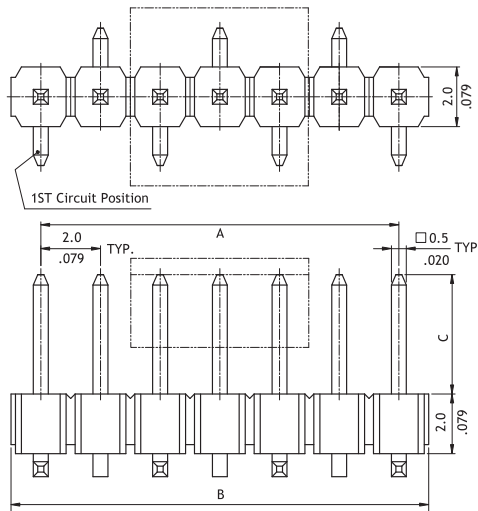
CH11 Series 2.0mm(.079") Single Row SMT Pin Headers

☉ Mate with CB22 series

RoHS Compliant

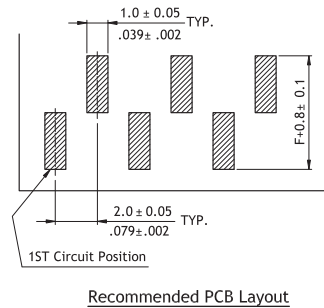
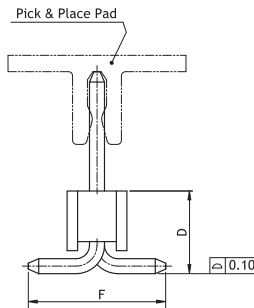


P/N CH11**2M100-0*-NH

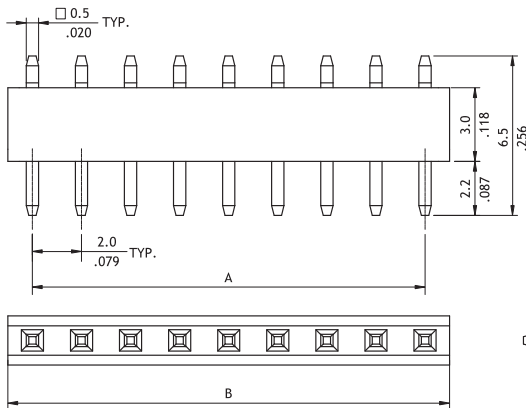


A = 2.0 x No. of Spaces
B = A + 2.0

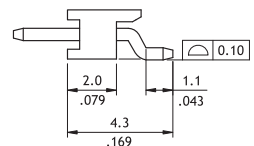
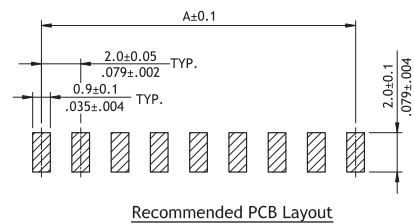
Option Code	Pin Dimension		
	C	D	E
00	4.0(.157)	2.77(.109)	4.6(.181)
01	6.73(.265)	2.77(.109)	4.6(.181)



P/N CH11**2SA01-NH



A = 2.0 x No. of Spaces
B = A + 2.0



Ordering Code

① CH ② 11 ③ 40 ④ 2 ⑤ M ⑥ 1 ⑦ 00 - ⑧ 00 - ⑨ NH

- ① Series No.
- ② No. of Circuits: 02 to 40
- ③ Plating Code: 2 = Gold flash over Nickel
- ④ Tail & Mounting Style: M = Top Entry SMT Type
S = Side Entry SMT Type
- ⑤ Insulator Material & Color:
1 = Nylon 6T, Color Black (for Top Entry)
A = LCP, Color Black (for Side Entry)

- ⑥ Other Options: 00 = Standard (for Top Entry)
01 = Standard (for Side Entry)
*See option code table
*Consult manufacturer for customized pin length
- ⑦ Pin Size: 0 = Original design
- ⑧ Packing Options: 0 = Without Pick & Place Pad (Tube)
P = With Pick & Place Pad (Tape & Reel)
*Code 7 and 8 for Top Entry Type only
- ⑨ Process: -NH = For Lead Free IR process and Halogen-Free