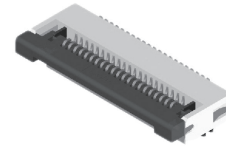
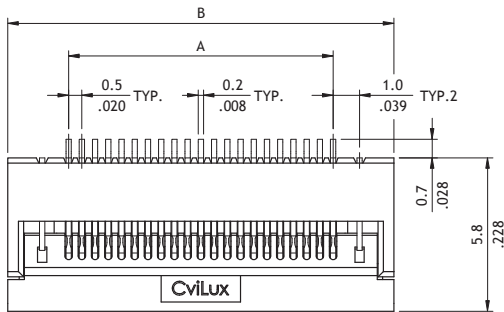


CF25 Series 0.50mm(.020")H=2.20 SMT ZIF One-Touch FFC/FPC Connectors

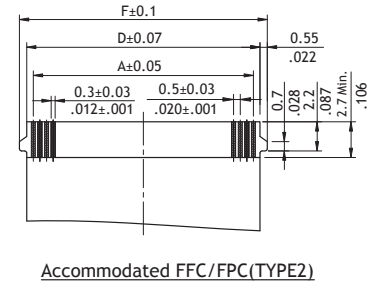
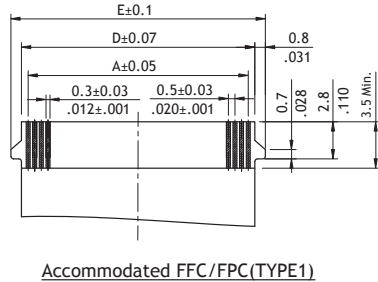
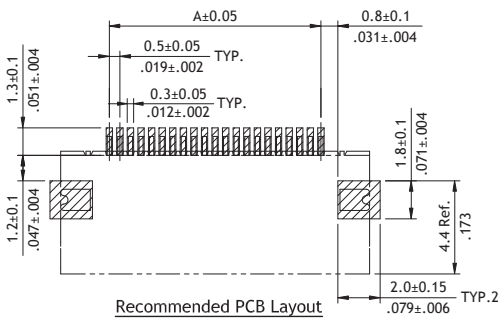
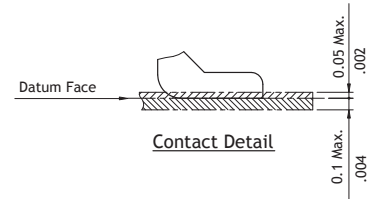
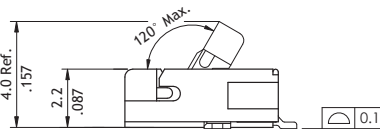
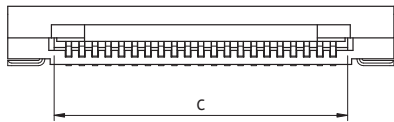
- ⊙ 2.2mm above the board
- ⊙ FFC/FPC zero insertion force and high retention force
- ⊙ Insulator: High temperature plastic UL 94V-0, Color Nature
- ⊙ Cover: High temperature plastic UL 94V-0, Color Black
- ⊙ Designed easy for FFC/FPC installation and reliable operation
- ⊙ With metal fixed tabs to secure connector in place



RoHS Compliant



A = 0.5 x No. of Spaces
 B = A + 4.6
 C = A + 1.1
 D = A + 1.0
 E = A + 2.6
 F = A + 2.1



Ordering Code

①	②	③	④	⑤	⑥	⑦	⑧	⑨
CF	25	65	1	D	0	T	E	- 05 - NH

- ① Series No.
- ② No. of Circuits: 05 to 65
Circuits not found above please consult manufacturer
- ③ Plating Code:
1 = Matte Tin over Nickel
F = Selective Gold flash over Nickel

- ④ Contact Style:
D = Downside Contact
- ⑤ Color: 0 = Nature
- ⑥ Packing:
R = Tape & Reel
T = Tube

- ⑦ Other Options:
D: Accommodated FFC/FPC (Type 1)
E: Accommodated FFC/FPC (Type 2)
- ⑧ Pitch: 05 = 0.50 mm
- ⑨ Process: -NH = For Lead Free IR process and Halogen-Free