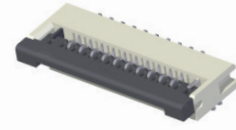
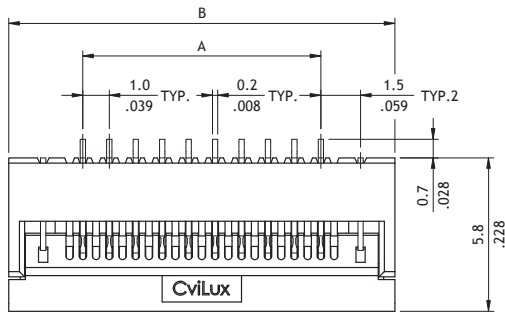


CF25 Series 1.00mm(.039")H=2.20 SMT ZIF One-Touch FFC/FPC Connectors

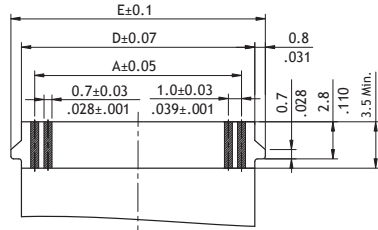
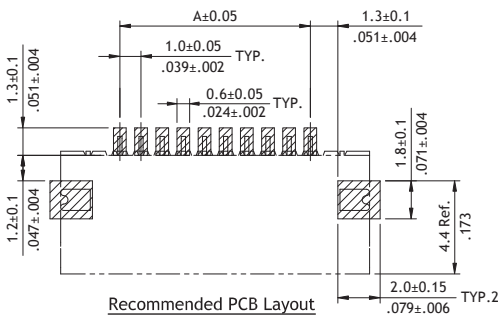
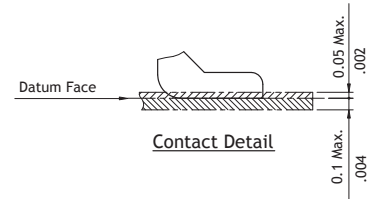
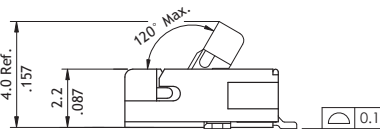
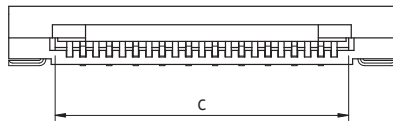
- ⊙ 2.2mm above the board
- ⊙ FFC/FPC zero insertion force and high retention force
- ⊙ Insulator: High temperature plastic UL 94V-0, Color Nature
- ⊙ Cover: High temperature plastic UL 94V-0, Color Black
- ⊙ Actuator designed easy for FFC/FPC installation and reliable operation
- ⊙ With metal fixed tabs to secure connector in place



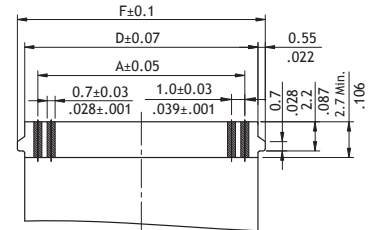
RoHS Compliant



A = 1.0 x No. of Spaces
 B = A + 5.6
 C = A + 2.1
 D = A + 2.0
 E = A + 3.6
 F = A + 3.1



Accommodated FFC/FPC (TYPE1)



Accommodated FFC/FPC (TYPE2)

Ordering Code

① **CF** ② **25** ③ **32** ④ **1** ⑤ **D** ⑥ **0** ⑦ **T** ⑧ **E** - ⑧ **10** - ⑨ **NH**

- ① Series No.
- ② No. of Circuits: 04 to 32
Circuits not found above please consult manufacturer
- ③ Plating Code:
1 = Matte Tin over Nickel
F = Selective Gold flash over Nickel

- ④ Contact Style:
D = Downside Contact
- ⑤ Color: 0 = Nature
- ⑥ Packing:
R = Tape & Reel
T = Tube

- ⑦ Other Options:
D: Accommodated FFC/FPC (Type 1)
E: Accommodated FFC/FPC (Type 2)
- ⑧ Pitch: 10 = 1.00 mm
- ⑨ Process: -NH = For Lead Free IR process and Halogen-Free