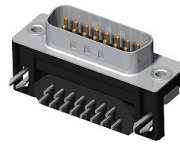


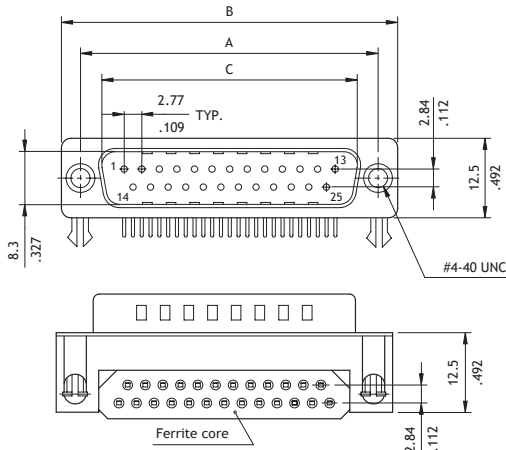
**CD62 Series 8.10mm Footprint EMI Right Angle DIP Solder D-Sub**

- ⊙ Mate with standard D-Sub
- ⊙ With ferrite core
- ⊙ Optional ground hooks or ground tabs

RoHS Compliant

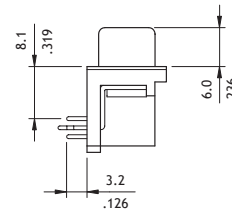


P/N CD62\*\*P\*1\*\*

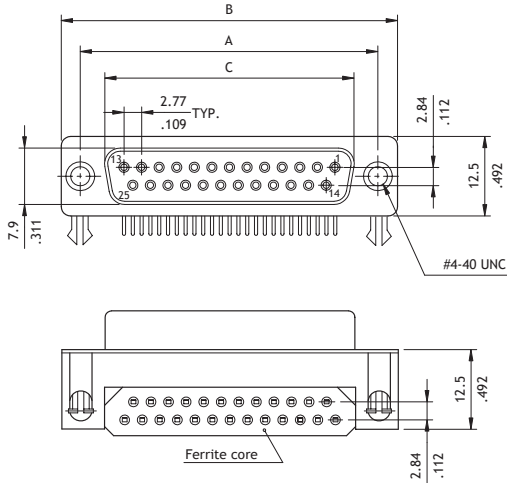


Plug Connector

Circuits	Dimension		
	A	B	C
9	25.0(.984)	30.8(1.213)	16.92(.666)
15	33.32(1.312)	39.2(1.543)	25.25(.994)
25	47.04(1.852)	53.1(2.087)	38.96(1.534)
37	63.5(2.500)	69.4(2.732)	55.42(2.182)

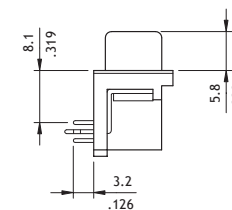


P/N CD62\*\*S\*1\*\*



Receptacle Connector

Circuits	Dimension		
	A	B	C
9	25.0(.984)	30.8(1.213)	16.3(.642)
15	33.32(1.312)	39.2(1.543)	24.6(.969)
25	47.04(1.852)	53.1(2.091)	38.3(1.508)
37	63.5(2.500)	69.4(2.732)	54.8(2.157)



**Ordering Code**

① CD ② 62 ③ 25 ④ P ⑤ 2 ⑥ 1 F 0

- ① Series No.
- ② No. of Circuits: 09, 15, 25, 37
- ③ Connector Type: P = Plug  
S = Receptacle
- ④ Plating Option:  
2 = Gold flash over Nickel  
\*Optional plating available but MOQ requested
- ⑤ Insulator Color: 1 = Black

- ⑥ Other Options:  
F0 = Riveted ground hooks with #4-40 UNC Open (Standard)  
I0 = Riveted ground tabs thread #4-40 UNC Open and ground tabs with  $\phi$  3.2mm holes  
J0 = Assembly ground hooks by #4-40 UNC Hex screws  
G0 = Riveted ground hooks pre-loaded #4-40 UNC Hex screws  
\*Special options consult manufacturer