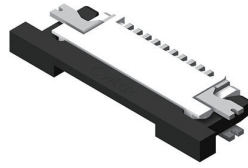
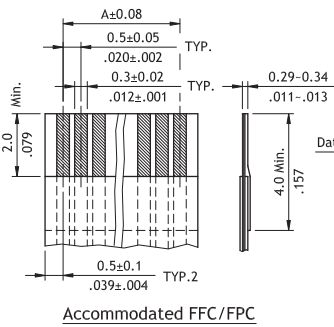
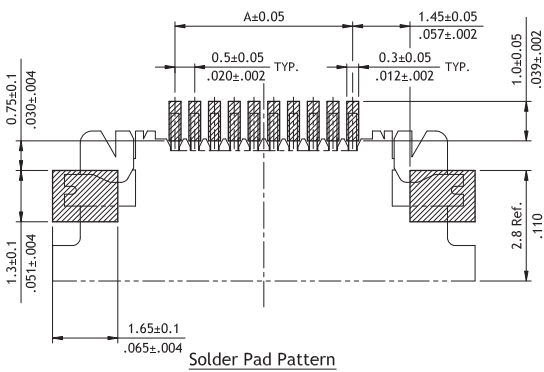
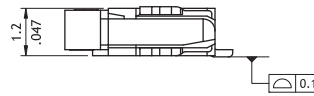
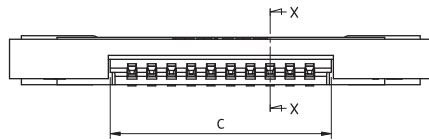
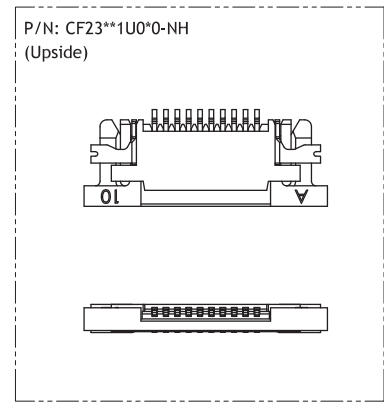
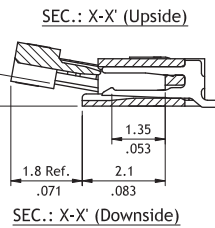
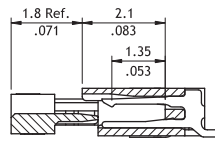
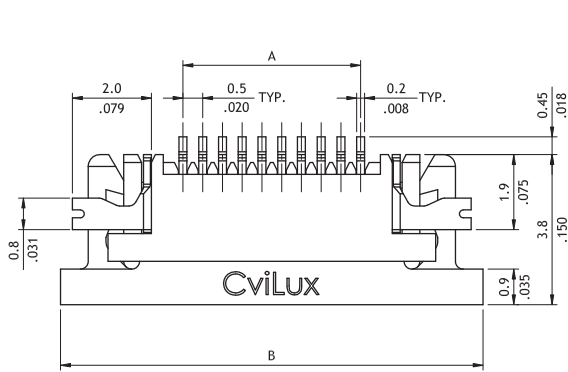


**CF23 Series 0.50mm(.020") H=1.20 SMT ZIF FFC/FPC Connectors**

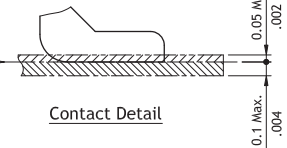
- ⊙ 1.2mm above the board
- ⊙ Insulator: High temperature plastic UL 94V-0, Color Nature
- ⊙ Slider: High temperature plastic UL 94V-0, Color Black
- ⊙ Fully checked by CCD and Hi-Pot test
- ⊙ With metal fixed tabs to secure connector in place



**RoHS** Compliant



A = 0.5 \* No. of Spaces  
B = A + 6.2  
C = A + 1.1



**Ordering Code**

① CF 23 ② 40 ③ 1 ④ U ⑤ 0 ⑥ R ⑦ 0 - ⑧ NH

- ① Series No.
- ② No. of Circuits: 04 to 40 (Available: 4~40)  
\*Circuits not found above please consult manufacturer\*
- ③ Plating Code:  
1 = Matte Tin over Nickel
- ④ Contact Style:  
U = Upside Contact  
D = Downside Contact
- ⑤ Color: 0 = Nature
- ⑥ Packing:  
R = Tape & Reel  
T = Tube
- ⑦ Other Options:  
0 = Standard  
\* Special options consult manufacturer
- ⑧ Process: -NH = For Lead Free IR process and Halogen-Free