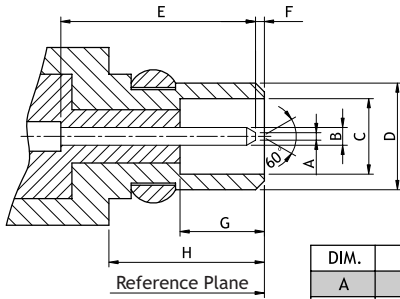


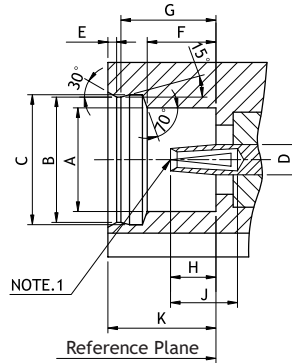
CR04 Series MMCX Microminiature snap-on Connectors

RoHS Compliant

Interface Mating Dimensions

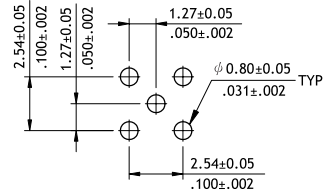
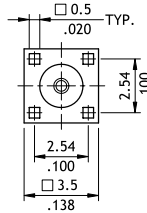
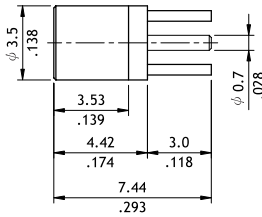


DIM.	Min.	Max.
A	-	0.20(.008)
B	0.38(.015)	0.42(.017)
C	1.58(.062)	1.62(.064)
D	-	2.40(.094)
E	-	3.15(.124)
F	0.00	0.25(.010)
G	1.45(.057)	-
H	2.70(.106)	-

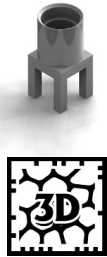


DIM.	Min.	Max.
A	2.41(.095)	-
B	2.87(.113)	2.90(.114)
C	3.00(.118)	3.04(.120)
D	0.68(.026)	0.72(.028)
E	-	0.23(.009)
F	1.57(.062)	1.63(.064)
G	2.30(.091)	2.34(.092)
H	0.90(.035)	1.20(.047)
J	1.40(.055)	-
K	2.60(.102)	-

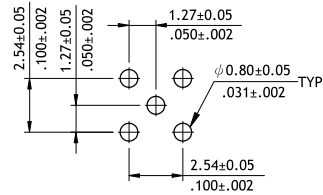
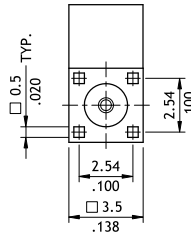
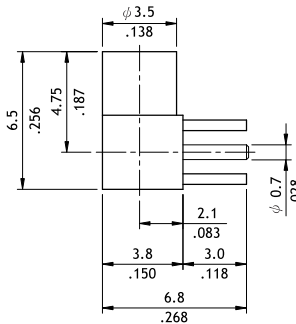
P/N CR04S03225000



Recommended P.C. Board Layout



P/N CR04S04225000



Recommended P.C. Board Layout



CR

RF CONNECTORS

Ordering Code

① CR **②** 04 **③** P **④** 01 **⑤** 2 **⑥** 2 **⑦** 5 000

- ①** Series No.
- ②** Type:
P = Plug (Male)
S = Jack (Female)
- ③** Contact Type:
01 = Straight, Cable Crimp
02 = Right Angle, Cable Crimp
03 = Straight, PCB Mount
04 = Right Angle, PCB Mount
05 = Top Entry SMT, PCB Mount
06 = Side Entry SMT, PCB Mount
- ④** Body Plating:
2 = Gold Flash plated over Nickel
- ⑤** Contact Plating:
2 = Gold Flash plated over Nickel
- ⑥** Impedance: 5 = 50Ω
- ⑦** Other Options: 000 = Standard