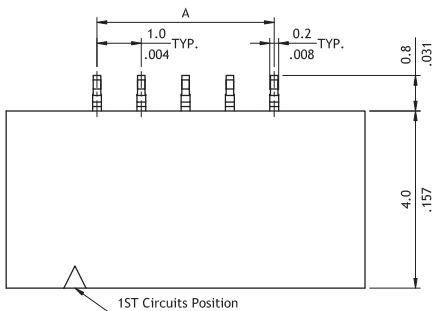
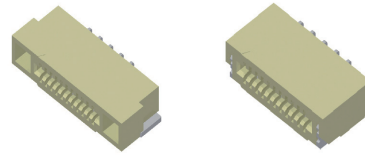


CF06 Series 1.00mm(.039")H=1.80 SMT LIF FFC/FPC Connectors

- ⊙ 1.8mm above the board
- ⊙ Copper alloy dual contacts
- ⊙ Insulator: High temperature plastic UL 94V-0, Color Nature
- ⊙ With metal fixed tabs to secure connector in place

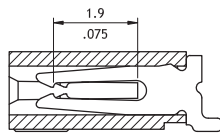
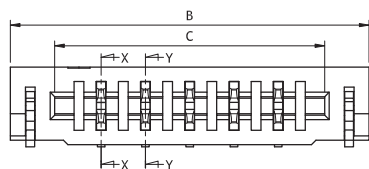
RoHS Compliant



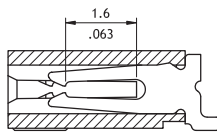
$$A = 1.0 * \text{No. of Spaces}$$

$$B = A + 4.1$$

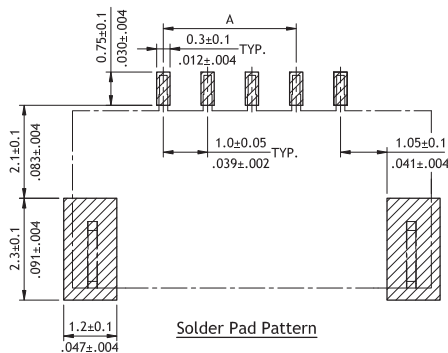
$$C = A + 2.1$$



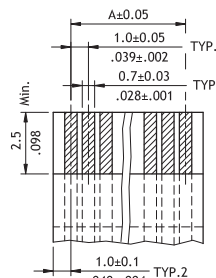
SEC.: X-X



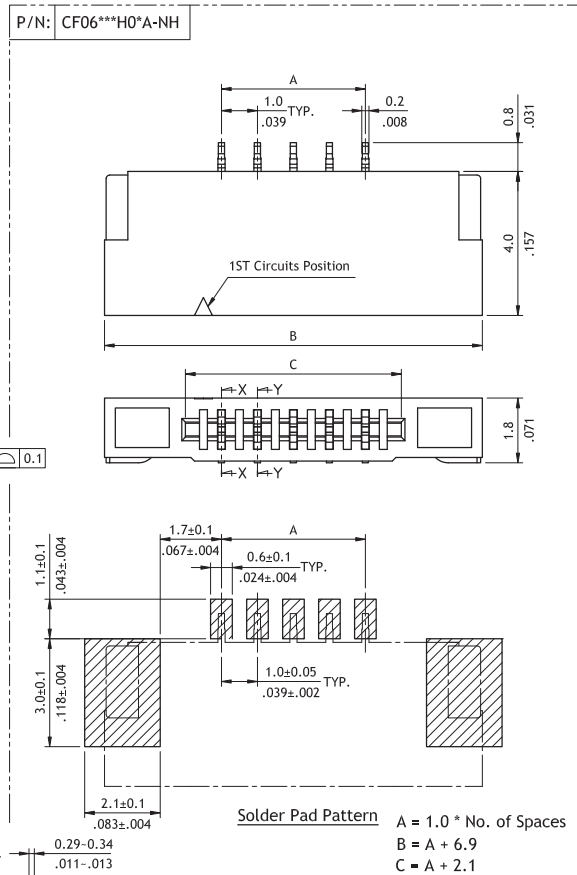
SEC.: Y-Y



Solder Pad Pattern



Accommodated FFC/FPC



Solder Pad Pattern

$$A = 1.0 * \text{No. of Spaces}$$

$$B = A + 6.9$$

$$C = A + 2.1$$

Contact Detail

Ordering Code

① ② ③ ④ ⑤ ⑥ ⑦ ⑧
CF 0 6 1 5 1 H 0 R 0 - NH

- ① Series No.
 ② No. of Circuits: 04 to 15
 (Available: R0:9,13,15
 RA:9,12,13)
 ③ Plating Code:
 1 = Matte Tin over Nickel
 2 = Gold flash over Nickel

- ④ Contact Style:
 H = Side Entry
 ⑤ Color: 0 = Nature
 ⑥ Packing:
 R = Tape & Reel
 T = Tube

- ⑦ Other Options:
 0 = Standard
 A = Base of Wide size
 *Special options consult manufacturer
 ⑧ Process: -NH = For Lead Free
 IR process and
 Halogen-Free