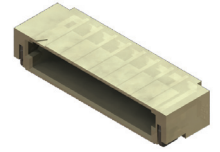
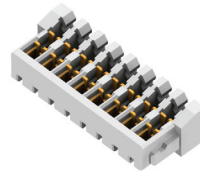
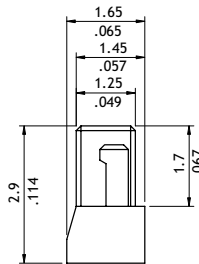
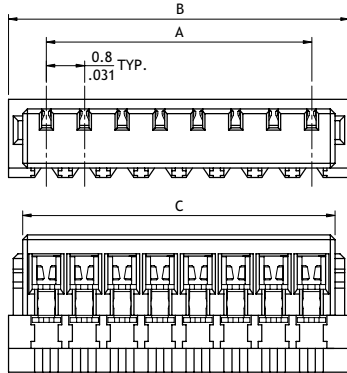


CI18 Series 0.80mm(.031") Wire to Board Housing & SMT Headers

- ⊙ Fixed tabs provide PCB hold-down
- ⊙ Insulator: High temperature plastic UL 94V-0, Color Nature
- ⊙ Housing: High temperature plastic UL 94V-0, Color Nature



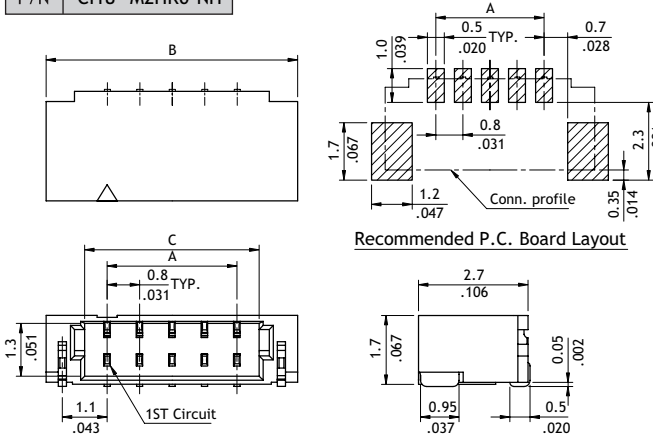
P/N CI18**S2000-NH



A = 0.8 x No. of Spaces
 B = A + 1.6
 C = A + 1.0

Wire Range	Insulation Diameter
AWG #32	0.39 mm (.015)

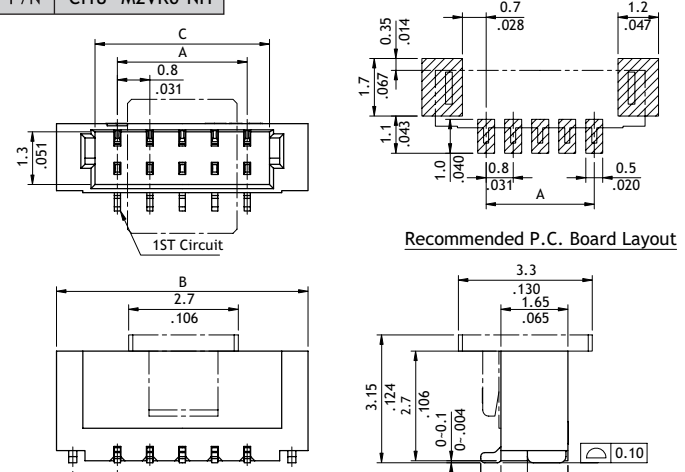
P/N CI18**M2HR0-NH



Recommended P.C. Board Layout

A = 0.8 x No. of Spaces
 B = A + 3.0
 C = A + 1.1

P/N CI18**M2VR0-NH



Recommended P.C. Board Layout

A = 0.8 x No. of Spaces
 B = A + 3.0
 C = A + 1.1

Ordering Code

1 2 3 4 5 6
CI 18 15 S 2 000 - NH

- 1 Series No.
- 2 No. of Circuits: 02 to 15
- 3 S = Housing
- 4 Plating Code:
 1 = Matte Tin over 50μ "Nickel
 2 = Gold flash over 50μ "Nickel
- 5 Other Options: 000 = Standard
- 6 -NH = For Halogen-Free

1 2 3 4 5 6 7 8
CI 18 15 M 2 H R 0 - NH

- 1 Series No.
- 2 No. of Circuits: 02 to 15
- 3 M = SMT Type
- 4 Plating Code: 1 = Matte Tin plated over Nickel
 2 = Gold flash over 50μ "Nickel
- 5 Type: V = Top Entry ; H = Side Entry
- 6 Packing Options: R = Tape & Reel
- 7 Other Options: 0 = Standard
- 8 -NH = For Lead Free IR process and Halogen-Free