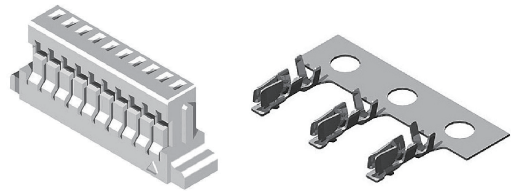
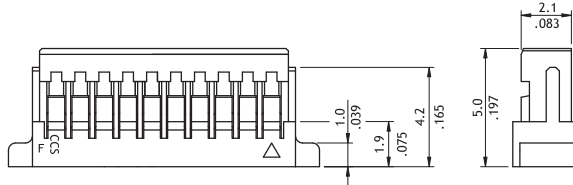
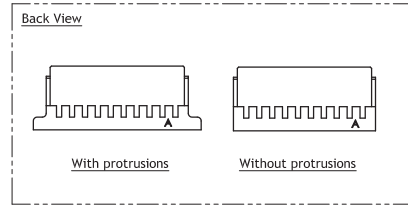
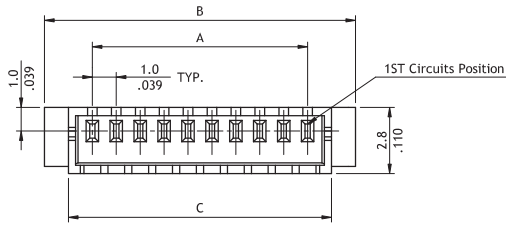


CI11 Series 1.00mm(.039") Single Row Wire to Board Housing & Terminal

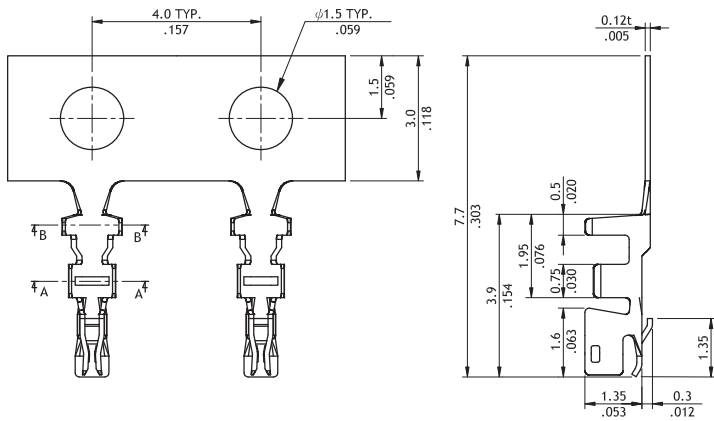
- ⊙ Insulator: Polyester UL 94V-0, Color Nature
- ⊙ Terminal: Tin plated, Phosphor Bronze
- ⊙ Mate with CI11 headers
- ⊙ Compact design
- ⊙ Protrusions design for easy pull out



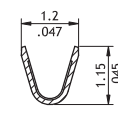
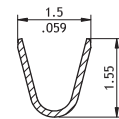
RoHS Compliant  



A = 1.0 x No. of Spaces
 B = A + 4.0
 C = A + 2.0



Wire Range	Insulation Diameter	Reel Qty
AWG #28-#32	0.4-0.8(mm) (.016-.031)	16,000 PCS



Ordering Code

- ① C ② I11 ③ 15 ④ S ⑤ 000 ⑥ 0 - NH
- ① Series No.
 - ② No. of Circuits: 02 to 15, 18, 20, 26
 - ③ S = Housing
 - ④ 000 = With Protrusions N00 = Without Protrusion
 - ⑤ Other Options: 0 = Standard *Special options consult manufacturer
 - ⑥ Process: -NH = For Halogen-Free

- ① CI11 ② T01 ③ 1 ④ P ⑤ P0
- ① Series No.
 - ② Type: T01 = AWG #28 ~ #32
 - ③ Plating Code: 1 = Tin over Nickel
 - ④ Material: P = Phosphor Bronze
 - ⑤ Other Options: P0 = Standard