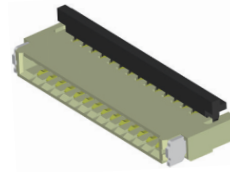


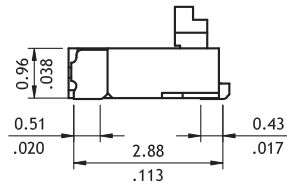
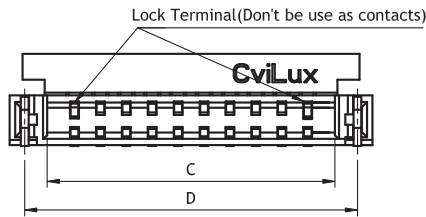
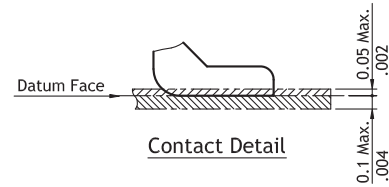
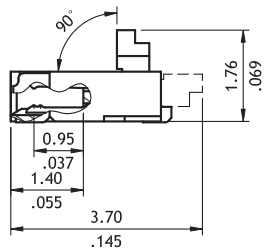
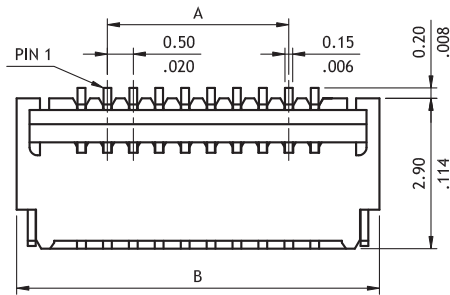
**CF42 Series 0.50mm(.020")H=0.96 SMT ZIF FFC/FPC Connectors (Back Flip)**

- ⊙ 0.96mm above the board
- ⊙ FFC/FPC zero insertion force and high retentions force
- ⊙ Insulator: High temperature plastic UL 94V-0, Color Nature
- ⊙ Cover: High temperature plastic UL 94V-0, Color Black
- ⊙ Designed easy for FFC/FPC installation and reliable operation
- ⊙ With metal fixed tabs to secure connector in place

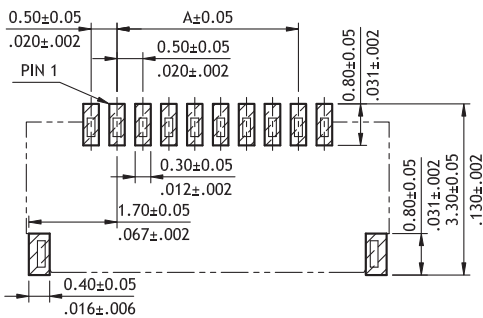
**NEW**



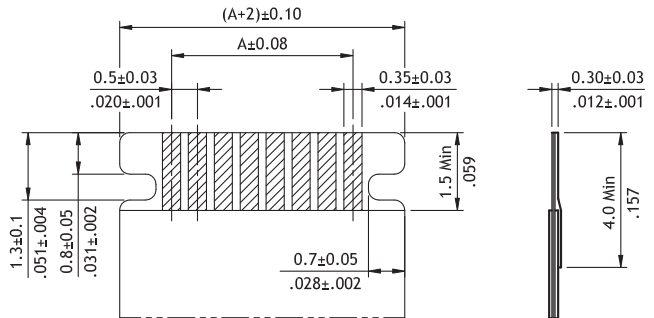
RoHS Compliant



A = 0.5 \* (No. of Spaces-1)  
 B = A + 3.5  
 C = A + 2.05  
 D = A + 2.92



Recommended PCB Layout



Accommodated FFC/FPC

**Ordering Code**

①	②	③	④	⑤	⑥	⑦	⑧	⑨
CF	42	08	F	H	0	R	A	- 05 - NH

- ① Series No.
- ② No. of Circuits: 04 to 29 (Available: 8)  
\*Circuits not found above please consult manufacturer\*
- ③ Plating Code:  
1 = Matte Tin over Nickel  
F = Gold flash over Nickel
- ④ Contact Style:  
H = Dual Side
- ⑤ Color: 0 = Nature
- ⑥ Packing:  
R = Tape & Reel
- ⑦ Other Options:  
A = Inner Lock Type
- ⑧ Pitch: 05 = 0.50 mm
- ⑨ Process: -NH = For Lead Free IR process and Halogen-Free