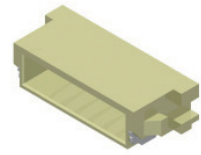
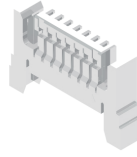
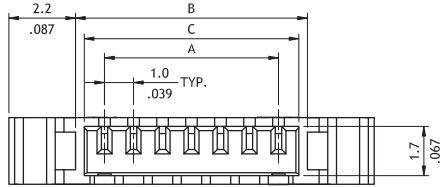


CI14 Series 1.00mm(.039") Wire to Board Housing & SMT Side Entry Header

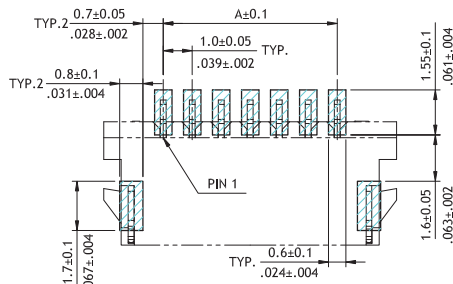
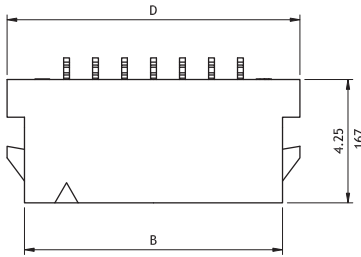
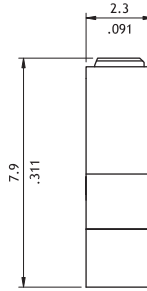
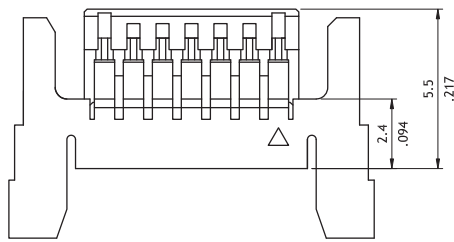
- ⊙ Can be used CI14 crimp clip terminal
- ⊙ Insulator: High temperature plastic UL 94V-0, Color Nature
- ⊙ Insulator: Nylon 66 UL 94V-0, Color Nature
- ⊙ With locking latch provide secure mating



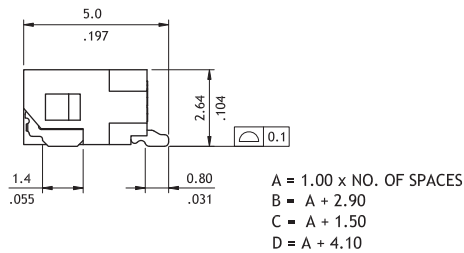
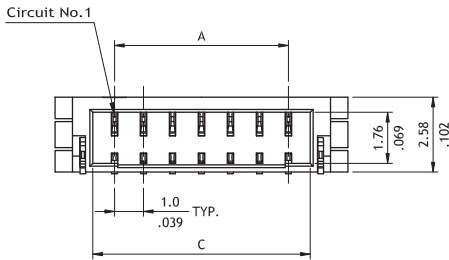
RoHS Compliant



A = 1.0 x NO. OF SPACES
 B = A + 2.0
 C = A + 1.4



Recommended PCB Layout



Ordering Code

① C ② I ③ 14 ④ 03 ⑤ S ⑥ L ⑦ 00C ⑧ - ⑨ NH

- ① Series No.
- ② No. of Circuits: 03 to 20
- ③ S= Housing
- ④ L=With Locking Latch
- ⑤ Other Option: 00C = Latch Type 2
- ⑥ Process: -NH = Halogen-Free

① C ② I ③ 14 ④ 03 ⑤ M ⑥ 1 ⑦ H ⑧ R ⑨ I - ⑩ NH

- ① Series No.
- ② No. of Circuits: 03 to 20
- ③ M = SMT Type
- ④ Plating Code: 1 = Matte Tin over Nickel
- ⑤ Type: H = Side Entry
- ⑥ Packing Options: R = Tape & Reel
- ⑦ Other Options: I = Dual Latch Type
- ⑧ Process: -NH = For Lead Free IR process and Halogen-Free