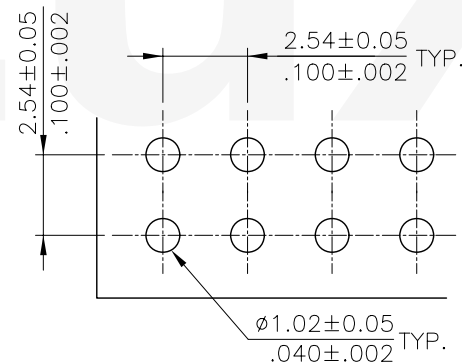
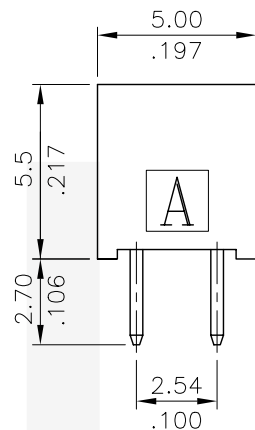


A = 2.54 * No. of Spaces

B = A + 3.0

* Available in 4 through 80 circuits



Recommended P.C. Board Layout

Material:

* Insulation: Glass filled polyester UL 94V-0

* Contact: Phosphor Bronze

Ordering Code:

CB85 ** 2 V 1 00
 ① ② ③ ④ ⑤ ⑥

- ① Series No.
- ② NO. of Circuits:
- ③ Plating code:
2= Gold flash plated over
1.27μm(50μ") Nickel
- ④ Tail Style: V= Straight
- ⑤ Color: 1= Black
- ⑥ Other options: 00= Standard

Tin-Lead Process

RoHS Compliant

4						DATE	UNIT: mm / inch	TITLE: 2.54MM(.100") DUAL ROW BOARD MOUNT CONNECTOR	 瀚荃股份有限公司 CviLux Corporation	
3	Sandy	5/19-08	ECR08044-1/ECN08213		DRAWN BY: Sandy	5/13-08'	TOLERANCE UNLESS OTHERWISE SPECIFIED			MATERIAL:
2	Bill	9/7-07'	ECR07111-0/ECN07372		ENGINEER: Clark	5/21-08'	.X ± 0.30 / .012	X' ± 1"		FINISH:
1	Eisley	3/3-06'	ECR06017-0/ECN06071		CHECKED BY: David	5/21-08'	.XX ± 0.20 / .008	.X' ±	DRAWING NO. CB8501SE	PART NO. CB85**2V100
SYM	NAME	DATE	REVISIONS		APPROVED BY: Alex	5/21-08'	.XXX ± 0.10 / .004	.XX' ±	SCALE 4 / 1	SHEET 1 OF 1