

Material:

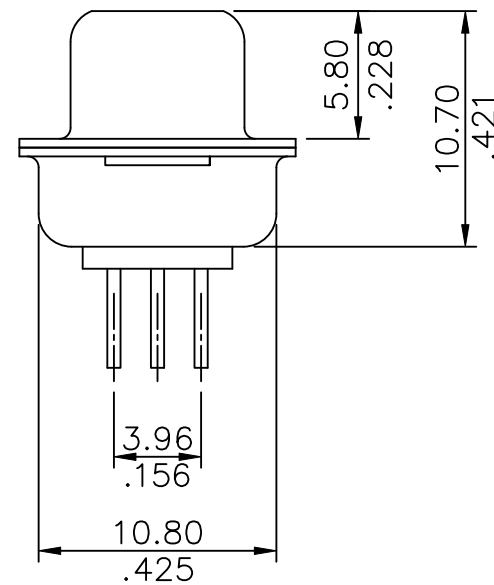
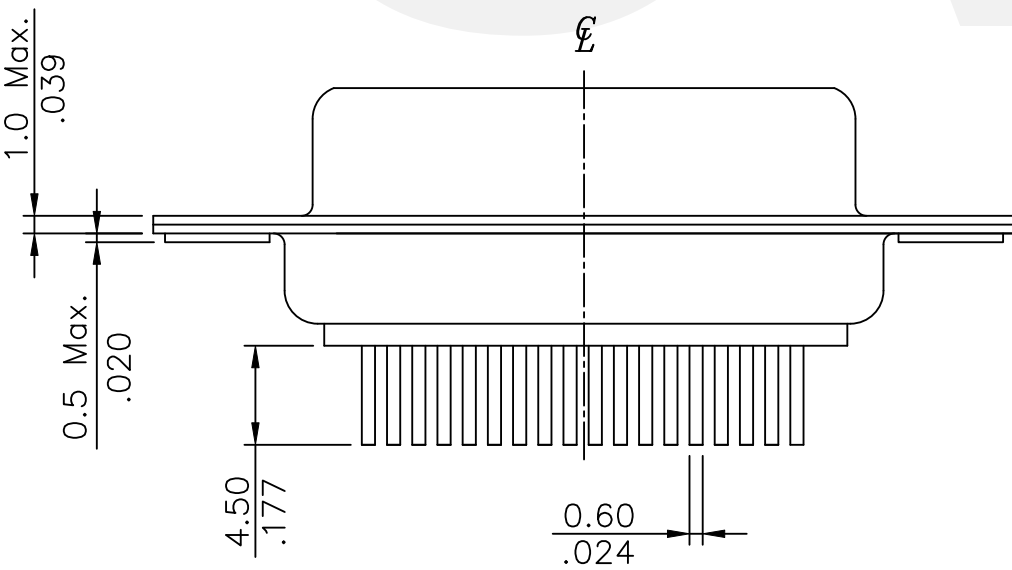
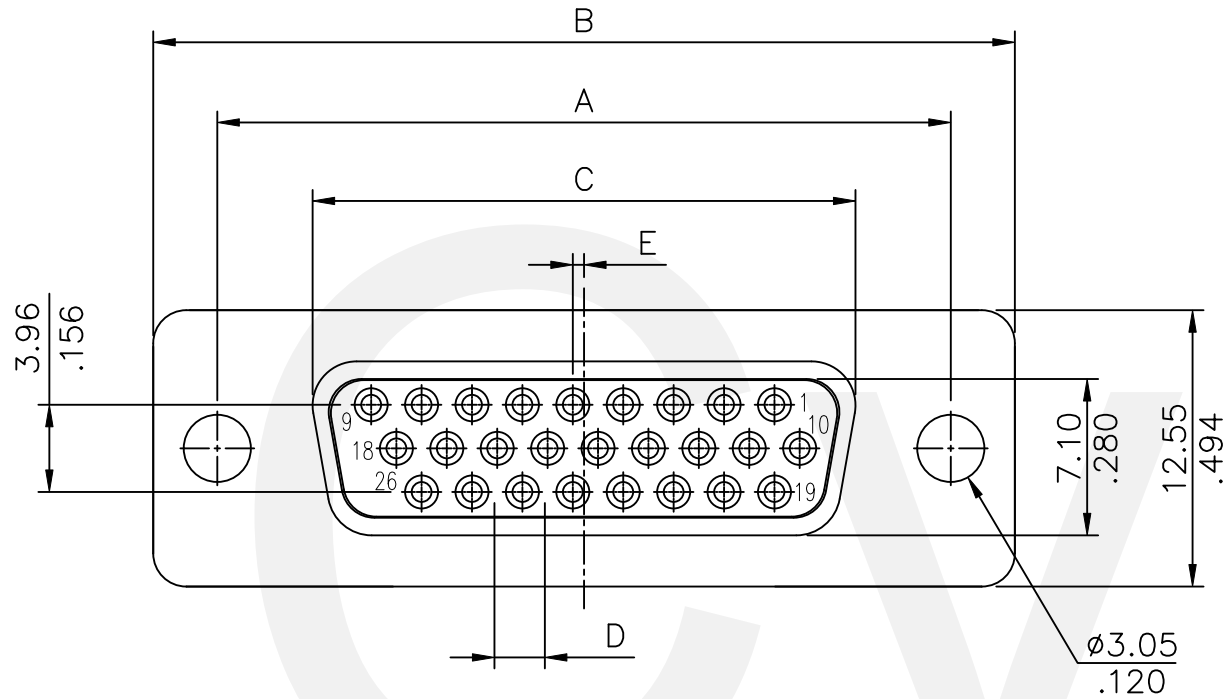
Insulator: PBT UL 94V-0, Color Black or White

Contact: Brass

Shell: SPCC, Nickel plated as standard

Note:

For Lead Free Wave Flow Process



Circuits	Dimension				
	A	B	C	D	E
15	24.99(.984)	30.81(1.213)	16.33(.643)	2.290(.090)	0.25(.010)
26	33.32(1.312)	39.14(1.541)	24.66(.971)	2.290(.090)	0.51(.020)
44	47.04(1.852)	53.04(2.088)	38.38(1.511)	2.290(.090)	0.51(.020)
62	63.50(2.500)	69.32(2.729)	54.84(2.159)	2.410(.095)	0.58(.023)

Ordering Code :

CD76 44 S * * 00
 ① ② ③ ④ ⑤ ⑥

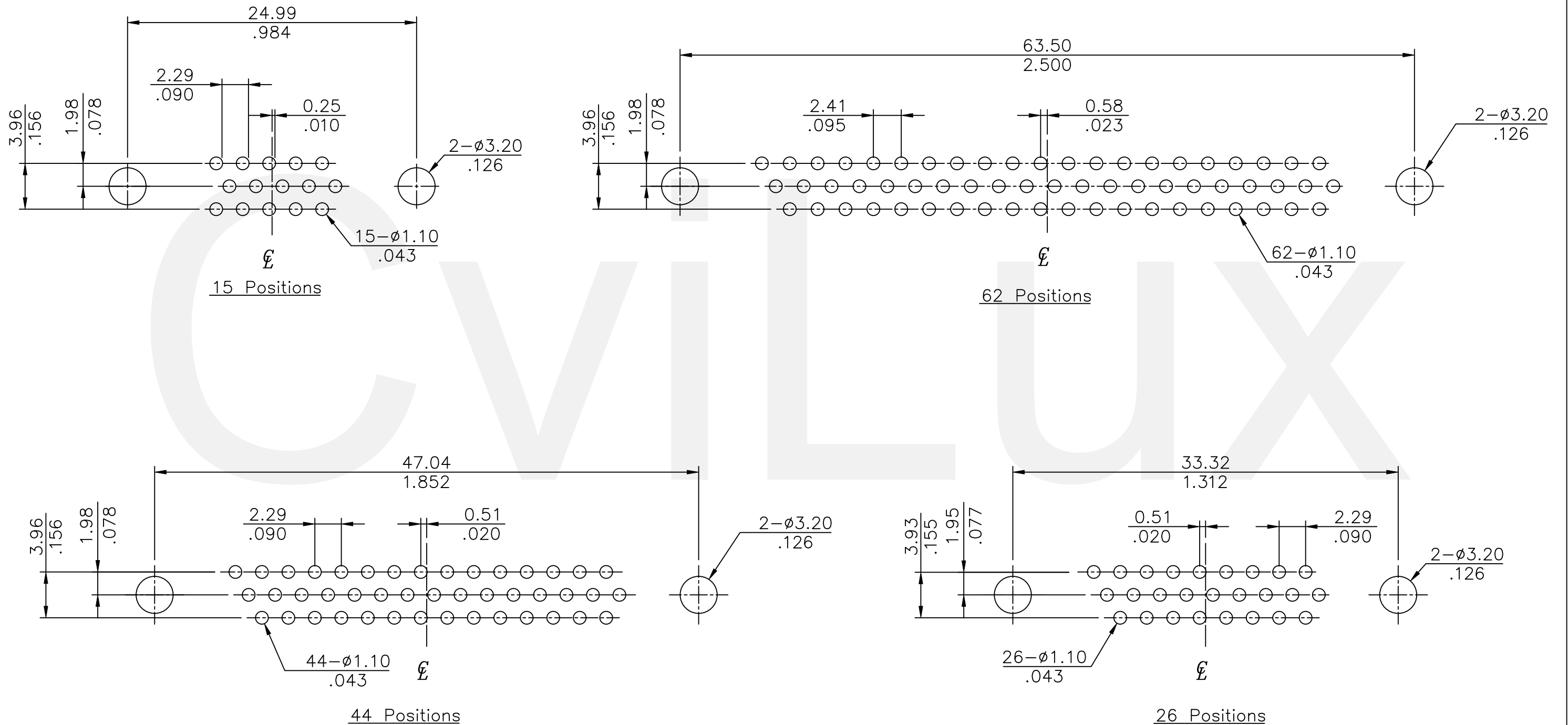
- Series No.
- Contacts: 15,26,44,62
- Contact type : S=Receptacle
- Contact Plating :
 - 2 = Gold flash plated over Nickel
 - 3 = 0.38 μ m(15 μ "") Gold plated over Nickel
 - 4 = 0.76 μ m(30 μ "") Gold plated over Nickel
- Insulator Color :
 - 1=Black , 0=White
- Other option :
 - 00 = With ϕ 3.05mm holes on shell

Lead Free Process

RoHS Compliant


4					DATE	UNIT: mm / inch	TITLE: HIGH-DENSITY D-SUB TOP ENTRY FEMALE CONNECTOR (MACHINED CONTACT)	瀚荃股份有限公司 CviLux Corporation
3					DRAWN BY: Sun	TOLERANCE UNLESS OTHERWISE SPECIFIED	MATERIAL:	
2					ENGINEER: Sun	.X \pm 0.30/.012 X' \pm 1'	FINISH:	DRAWING NO. CD7602SB PART NO. CD76**S**00
1	Sun	5/10-24'	ECRT124027/ECNT124027	CHECKED BY: Eisley	5/10-24'	X' \pm		SCALE 2 / 1 SHEET 1 OF 1
SYM	NAME	DATE	REVISIONS	APPROVED BY: Eisley	5/10-24'	.XX' \pm		

CviLux Corp
 2024/05/15
 ISSUED



Recommended P.C. Board Layout

RoHS Compliant

4					DATE	UNIT: mm / inch	TITLE: D-SUB CONNECTOR P.C.BOARD LAYOUT	 瀚荃股份有限公司 CviLux Corporation			
3					DATE	TOLERANCE UNLESS OTHERWISE SPECIFIED	MATERIAL:				
2					DATE	.X ±0.30/.012 X* ±1"	FINISH:	DRAWING NO.	CD7602SB	PART NO.	CD76**P**00
1	Sun	5/10-24'	ECRT124027/ECNT124027		DATE	.XX ±0.20/.008 X* ±		SCALE	2 / 1	SHEET	2 OF 2
SYM	NAME	DATE	REVISIONS	APPROVED BY:	DATE	.XXX ±0.10/.004 X* ±					

