

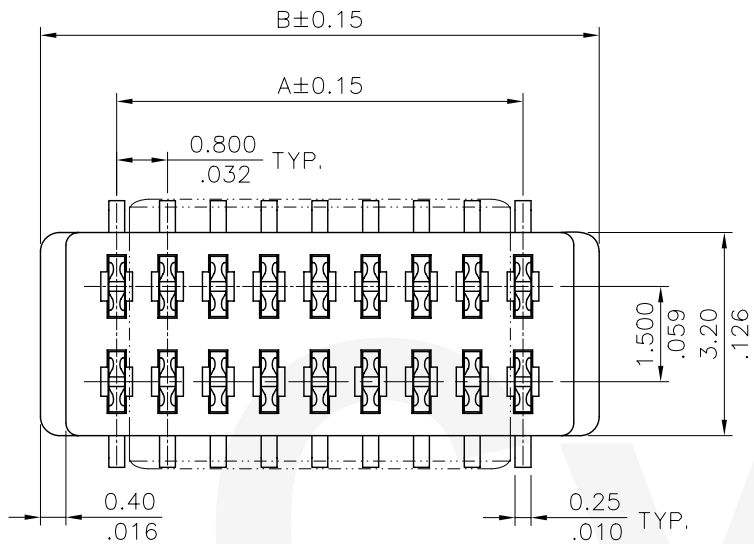
Material:

- * Housing :NYLON 6T WITH 30% GF. UL 94V-0 Color Black
- * Contact: Phosphor Bronze
- * Pick & Place Pad: Phosphor Bronze

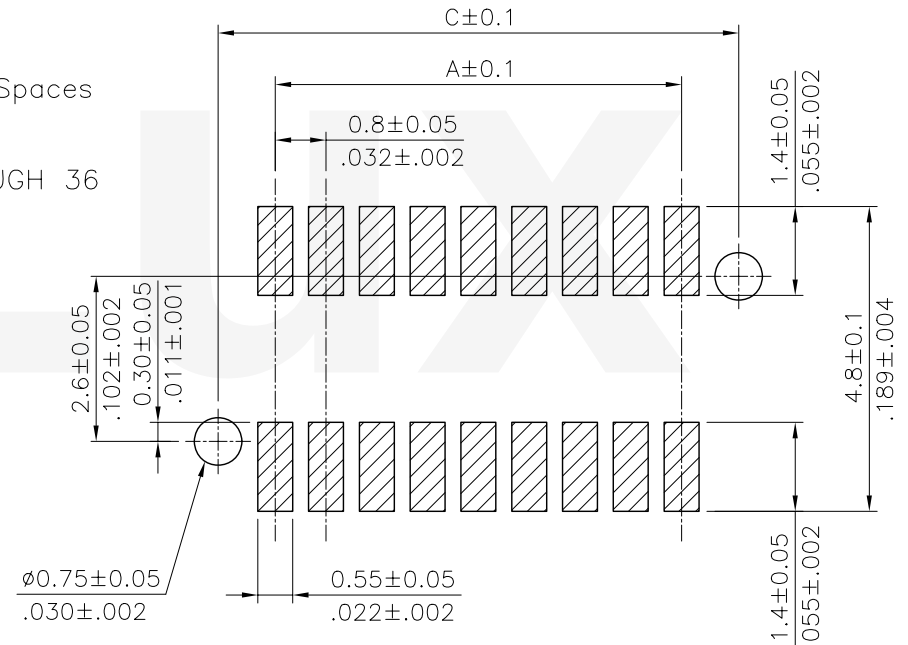
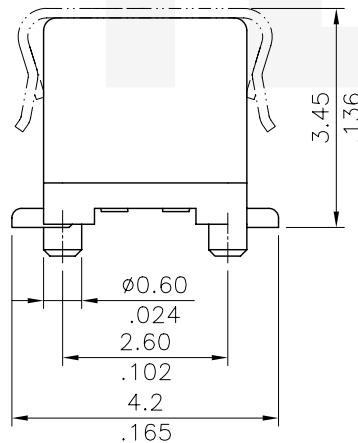
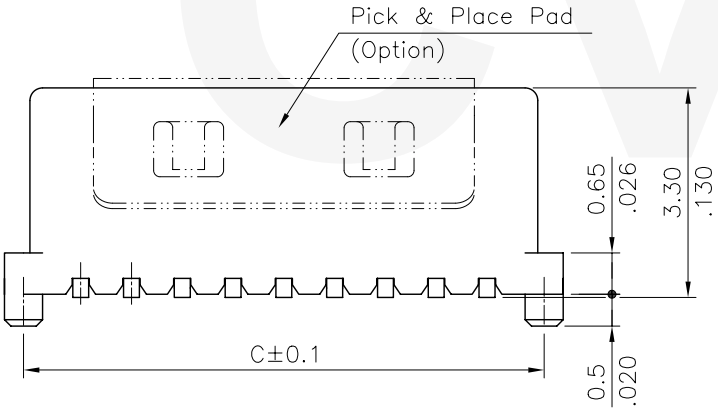
Ordering Code

CBC3 ** * M 1 R 0
 ① ② ③ ④ ⑤ ⑥ ⑦

1. Series No.
2. Contacts : 06 to 36
3. Plating : 1= 120μ" Min. Tin plated over 30μ" Nickel
 2= Gold flash plated over 1.27μ(50μ") Nickel
 4=0.76μ(30μ") Gold plated over 1.27μ(50μ") Nickel
 A= Selective Gold flash plated over Nickel
4. Tail Style : M= SMT Type
5. Color : 1= Black
6. Packing : R= Tape & Reel (With Pick & Place Pad)
7. Other Option : 0= Standard
 N= Without Pick & Place Pad



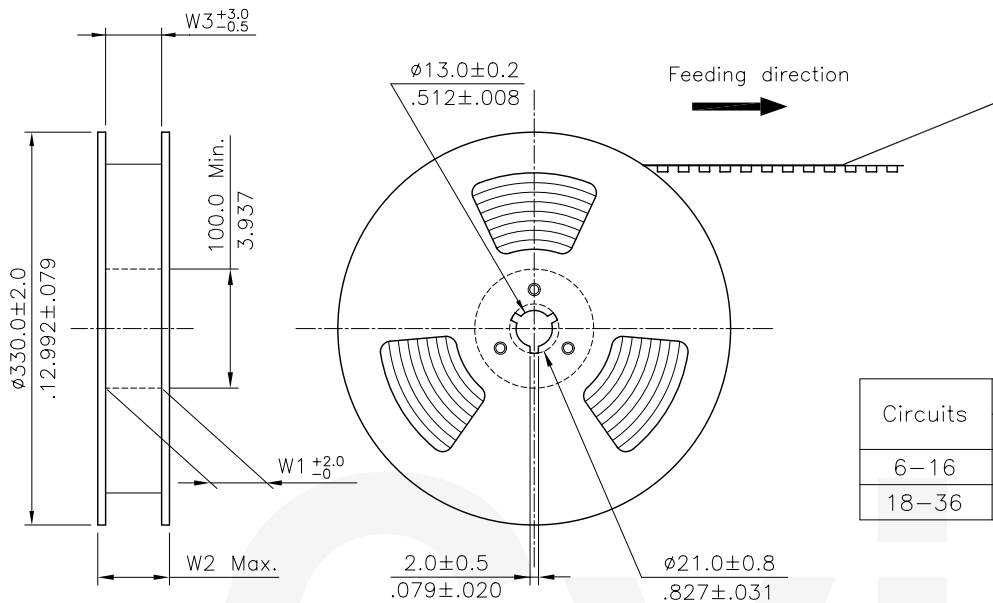
DIM A = 0.8 X No. of Spaces
 DIM B = DIM A + 2.4
 DIM C = DIM A + 1.8
 * AVAILABLE IN 6 THROUGH 36
 CIRCUITS



Recommended P.C. Board Layout

RoHS Compliant

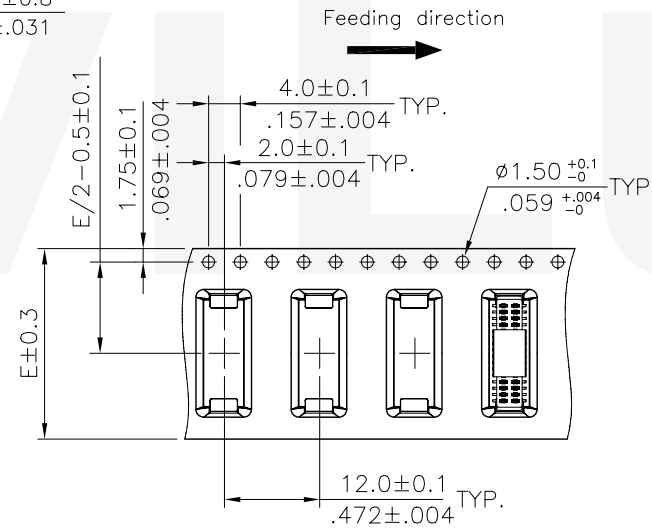
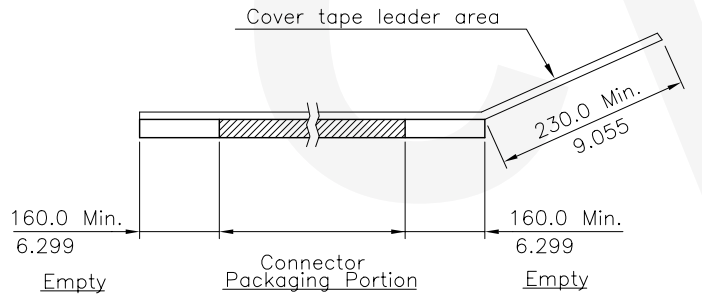
④	Karen	8/11-08'	ECN08382		DATE	UNIT: mm / inch	TITLE: 0.80x1.50mm(.032"x.059")	瀚荃股份有限公司 CviLux Corporation	
③	Sandy	4/29-07'	ECN07153		DRAWN BY: Karen	8/11-08'	TOLERANCE UNLESS OTHERWISE SPECIFIED		SMT TYPE SOCKET
②	SUN	6/03/04'	ECN04225		ENGINEER: Eisley	8/13-08'	.X ± 0.25/.010 X: ± 1'		MATERIAL:
①	SUN	3/16/04'	ECN04108		CHECKED BY: Alex	8/13-08'	.XX ± 0.15/.006 .X: ±		FINISH:
SYM	NAME	DATE	REVISIONS		APPROVED BY: Alex	8/13-08'	.XXX ± 0.08/.003 .XX: ±		
			DRAWING NO. CBC301SF	PART NO. CBC3***M1R*		SCALE 8 / 1	SHEET 1 OF 2		



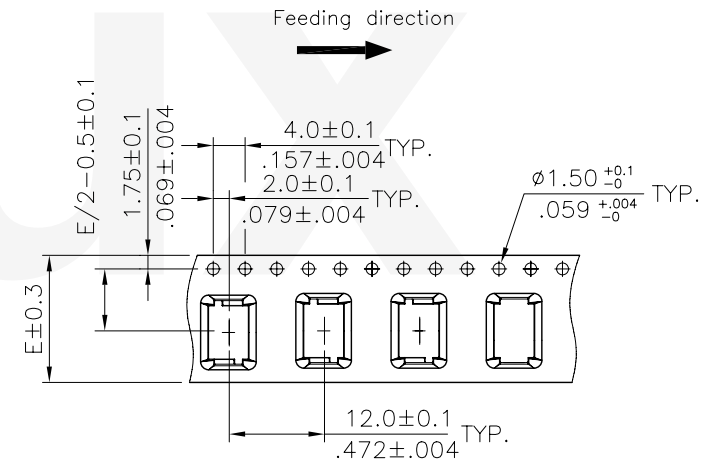
NOTE :

- * Reel Material : HIPS
- * Carrier Material : Black, Conductive Polystyrene Alloy
- * Cover Tape Material : Polyester
- * Cover Tape Peel Strength : 0.1N – 1.3N
- * Carrier camber is within 1mm in 100mm
- * All dimensions meet EIA-481-B requirements.
- * Quantity : 1000 PCS/Reel

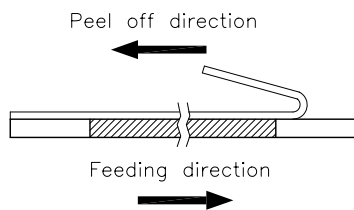
Circuits	Dimension					Packing (Reel/Caton)
	E	F	W1	W2	W3	
6-16	16.0(.630)	-	16.5(.650)	22.5(.886)	16.5(.650)	11
18-36	24.0(.945)	-	24.5(.965)	30.5(1.200)	24.5(.965)	9



WIDTH : 32,44 mm Carrier



WIDTH : 16 mm Carrier



RoHS Compliant

4	Karen	8/11-08'	ECN08382		DATE	UNIT: mm / inch	TITLE: 0.80x1.50mm(.032"x.059")	瀚荃股份有限公司 CviLux Corporation	
3	Sandy	4/29-07'	ECN07153		DRAWN BY: Karen	8/11-08'	TOLERANCE UNLESS OTHERWISE SPECIFIED		SMT TYPE SOCKET
2	SUN	6/03/04'	ECN04225		ENGINEER: Eisley	8/13-08'	.X ±		.X' ± 1'
1	SUN	3/16/04'	ECN04108		CHECKED BY: Alex	8/13-08'	.XX ±	.X' ±	MATERIAL:
SYM	NAME	DATE	REVISIONS		APPROVED BY: Alex	8/13-08'	.XXX ±	.XX' ±	FINISH:
								DRAWING NO. CBC301SF	PART NO. CBC3***M1R*
								SCALE	SHEET 2 OF 2