

Material:

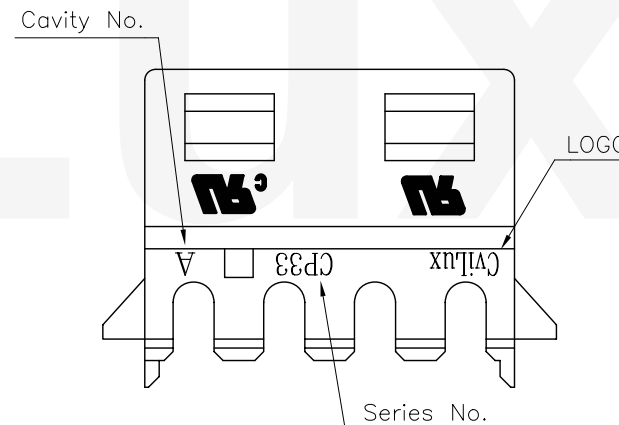
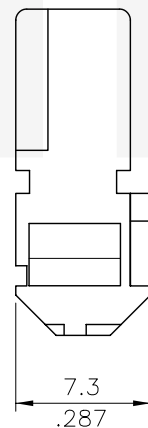
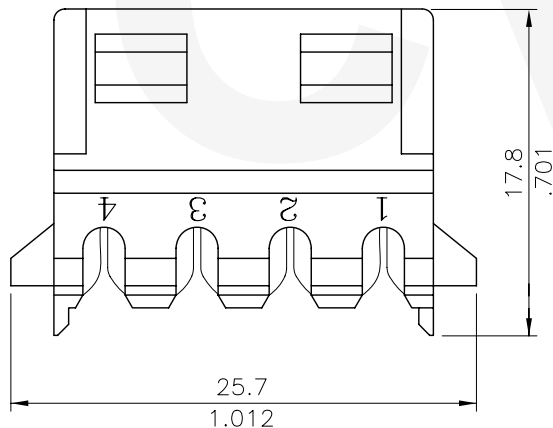
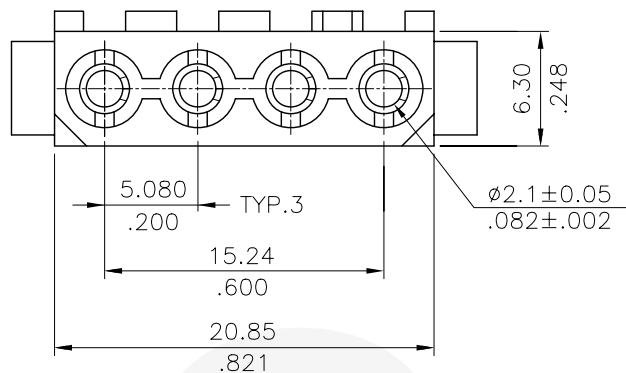
* Insulation: Nylon 66 94V-2 or 94V-0

* Contact: Phosphor Bronze

Ordering Code:

CP33 04 S 1 00 *
 ① ② ③ ④ ⑤ ⑥

- ① Series No.
- ② No. of Circuits: 4 Circuits
- ③ Contact type: S=Female
- ④ Contact plated: 1= Tin over 1.27μm (50μ") Nickel
- ⑤ Color code: 00= Color Nature
- ⑥ Option: 0= 94V-2, Acceses AWG#18~20
 A= 94V-2, Acceses AWG#22
 B= 94V-0, Acceses AWG#18~20
 C= 94V-0, Acceses AWG#22



Halogen-Free

④						DATE	UNIT: mm / inch	TITLE: 5.08MM(.200")				
③					DRAWN BY: Sun	03/10-03'	TOLERANCE UNLESS OTHERWISE SPECIFIED			IDC RECEPTACLE CONNECTOR		
②					ENGINEER: David	03/10-03'	.X ± 0.30/.012	X' ± 1'		MATERIAL:		
①					CHECKED BY: David	03/10-03'	.XX ± 0.20/.008	.X' ±	FINISH:			
SYM	NAME	DATE	REVISIONS		APPROVED BY: Alex	03/10-03'	.XXX ± 0.10/.004	.XX' ±		DRAWING NO. CP3301SD	PART NO. CP3304S100*	
									SCALE	2 / 1	SHEET	1 OF 1