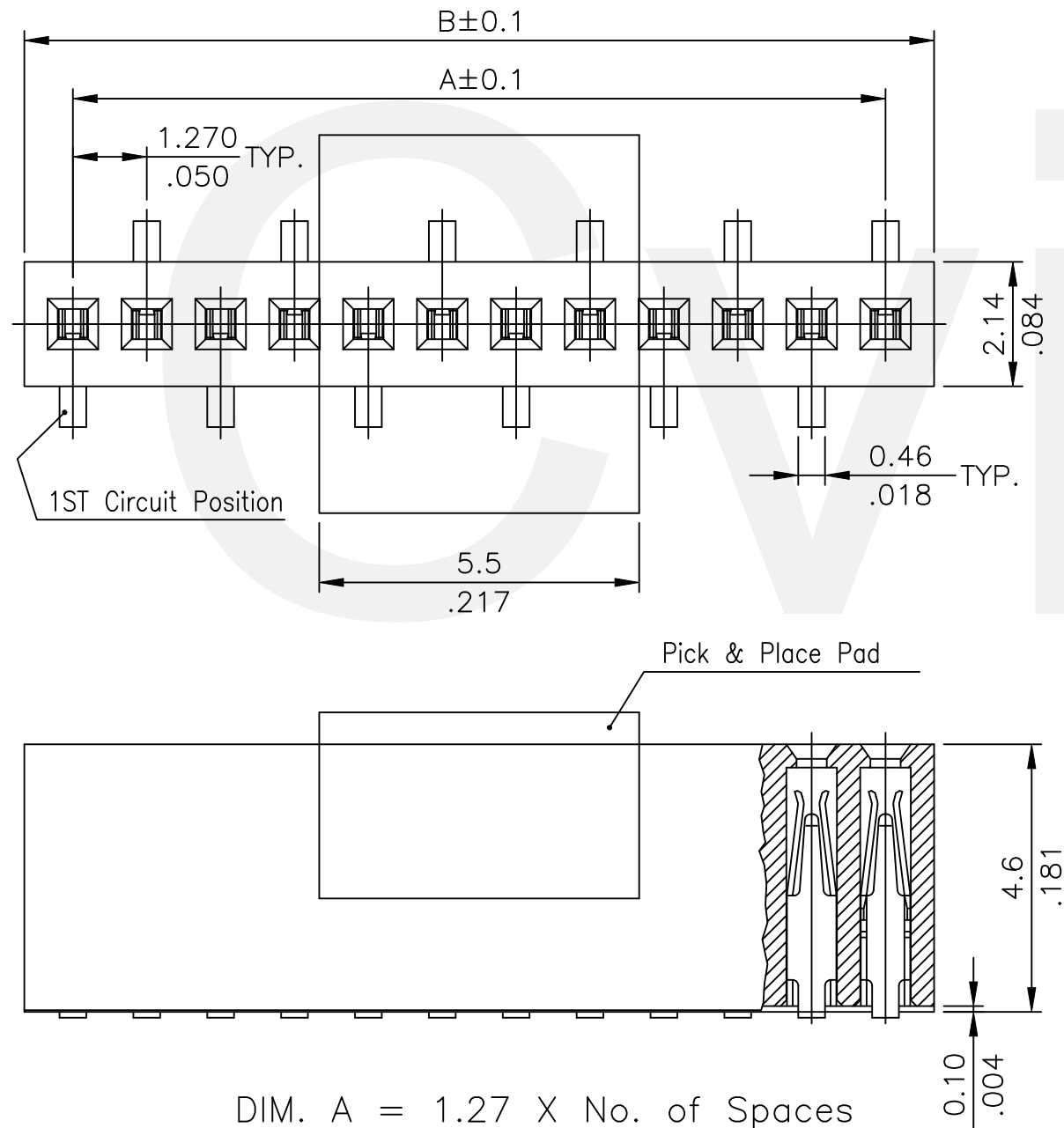


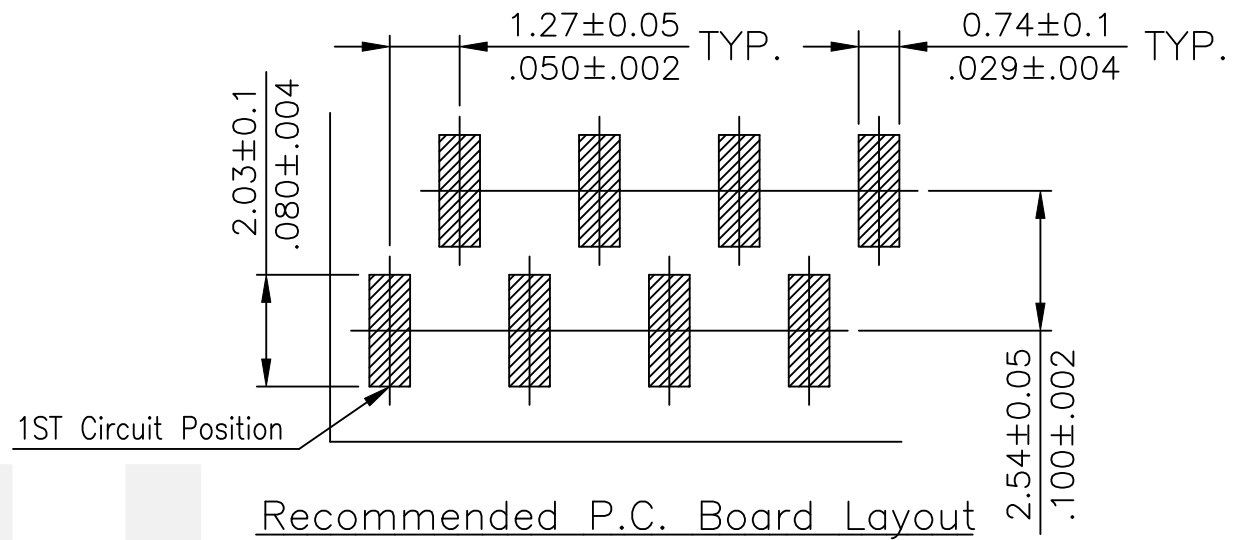
Material:

- * Insulator: LCP With 40% G.F., UL 94V-0 Color Black
- * Contact: Phosphor Bronze
- △* Pick & Place Pad: Nylon 6T With 30% GF.
UL 94V-0 Color Black



DIM. A = 1.27 X No. of Spaces
DIM. B = DIM. A + 1.67

* Available in 4 through 50 Circuits

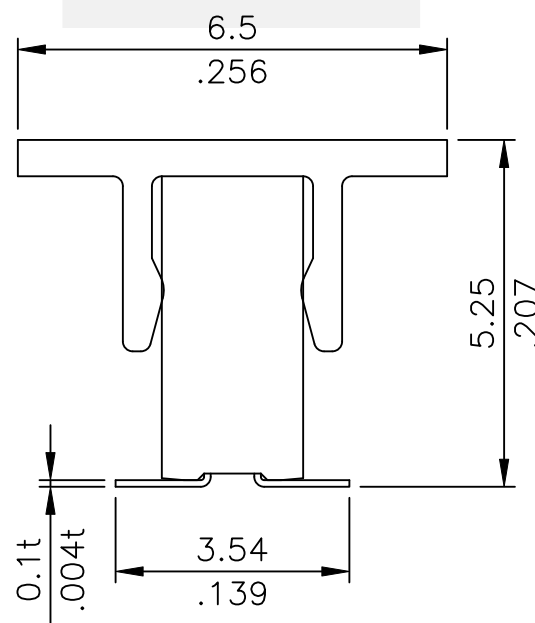


Recommended P.C. Board Layout

Ordering Code:

CB01 ** * M 1 00 - 2 P -NH
① ② ③ ④ ⑤ ⑥ ⑦ ⑧ ⑨


- ① Series No.
- ② No. of Contact: 04 to 50
- ③ Plating code:
2= Gold flash plated over 1.27μm(50μ") Nickel
3= 0.38μm(15μ") Gold plated over 1.27μm(50μ") Nickel
4= 0.76μm(30μ") Gold plated over 1.27μm(50μ") Nickel
- ④ Tail Style: M = SMT Type
- ⑤ Insulator Color: 1 = Black
- ⑥ Other option:
- ⑦ Pin Size for mate Pin header:
2= 0.4 Square Pin
- ⑧ 0= Without Pick & Place Pad
P= With Pick & Place Pad
- ⑨ -NH= For Lead Free IR Reflow Processes & Halogen-Free



Halogen-Free

Lead Free Process

RoHS Compliant

△4					DATE	UNIT: mm / inch	TITLE: PITCH 1.27mm(.050") SMT TYPE SOCKET	 瀚荃股份有限公司 CviLux Corporation
△3				DRAWN BY: Sun	4/27-23'	TOLERANCE UNLESS OTHERWISE SPECIFIED	MATERIAL:	
△2				ENGINEER: Sun	4/27-23'	.X ± 0.25/.010 X' ± 1"	FINISH:	
△1	Sun	4/27-23'	ECNT123090	CHECKED BY: Eisley	4/27-23'	.XX ± 0.15/.006 X' ±	DRAWING NO. CB0108SB PART NO. CB01***M100-2*-NH	
SYM	NAME	DATE	REVISIONS	APPROVED BY: Eisley	4/27-23'	.XXX ± 0.08/.003 .XX' ±	SCALE 6 / 1 SHEET 1 OF 1	

