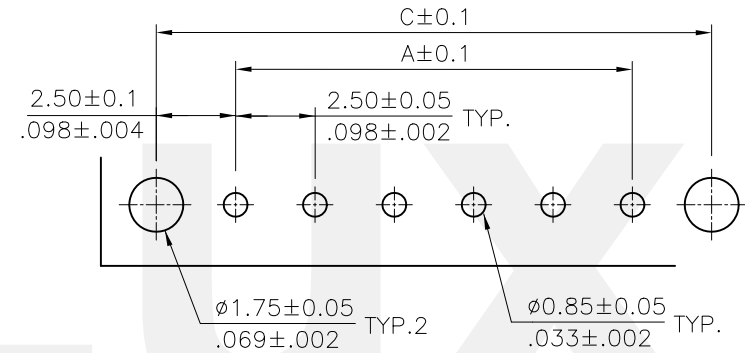
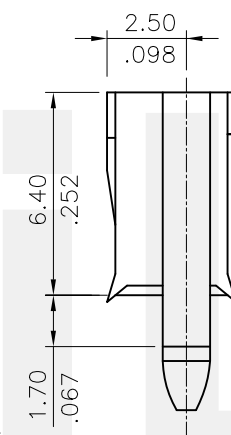
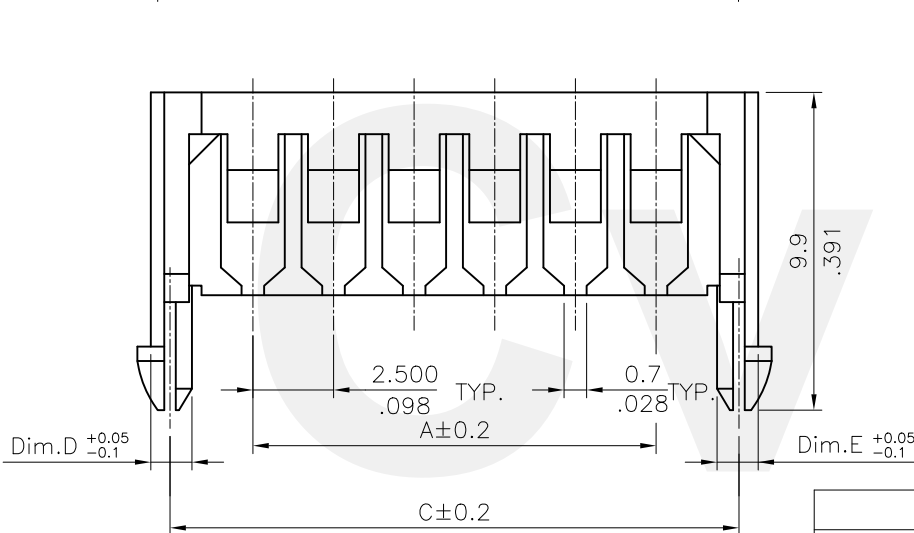
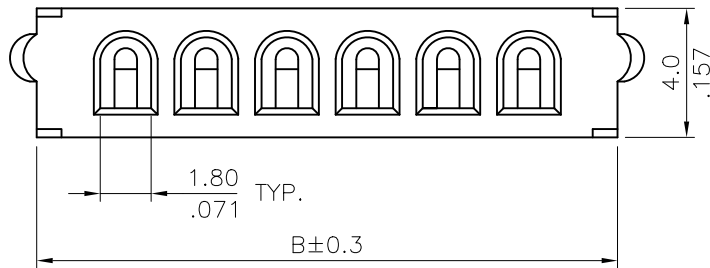


Ordering Code:

$\frac{CI91}{①}$ $\frac{**}{②}$ $\frac{SB}{③}$ $\frac{00}{④}$ $\frac{0}{⑤}$

- ① Series No.
- ② No. of Circuits:
- ③ Accommodated wire style:
SB= For Discrete Wire, Split Ribbon Cable and Notched Flat Cable
- ④ Insulator: 00= Nylon, UL 94V-0, Color Nature
01= PBT, UL 94V-0, Color Nature(White)
- ⑤ Other option: 0= DIM.D=1.60; DIM.E=1.60(Standard)



Recommended P.C. Board Layout

A = 2.5 * No. of Spaces

B = A + 5.3

C = A + 5.0

* Available in 2 through 5, 7 & 8 circuits

ACCOMMODATED WIRE SIZE: AWG#24~#26

Discrete Wire	Split Ribbon Cable	Notched Flat Cable

RoHS Compliant

⑤	Karen	8/25-14'	ECNT114188/ECRT114074		DATE	UNIT: mm / inch	TITLE: 2.50MM(.098") WIRE HOLDER CONNECTOR	瀚荃股份有限公司 CviLux Corporation
④	Enya	3/7-13'	ECN13058-0/ECR13023-0	DRAWN BY: Karen	8/27-14'	TOLERANCE UNLESS OTHERWISE SPECIFIED	MATERIAL:	
③	SUN	4/16/04'	ECN04155	ENGINEER: Sun	8/27-14'	.X ± 0.30/.012 X' ± 1"	FINISH:	DRAWING NO. CI9101SI
②	Eisley	3/09/04'	ECN04097	CHECKED BY: Eisley	8/28-14'	.XX ± 0.20/.008 X' ±		PART NO. CI91**SB0*0
SYM	NAME	DATE	REVISIONS	APPROVED BY: Eisley	8/28-14'	.XXX ± 0.10/.004 .XX ±	SCALE	4 / 1
								SHEET 1 OF 1

CIVILUX CORP
 2014.08.29
 ISSUED