

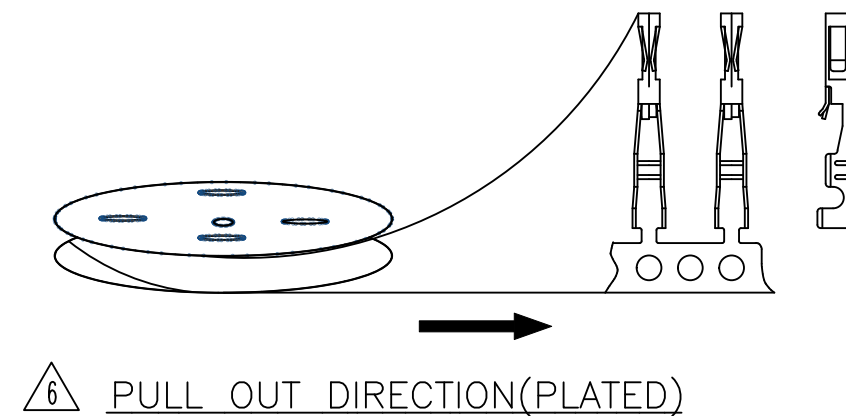
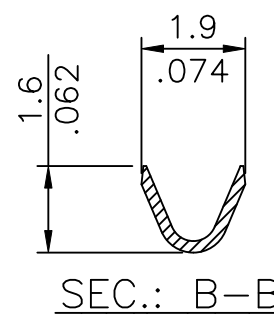
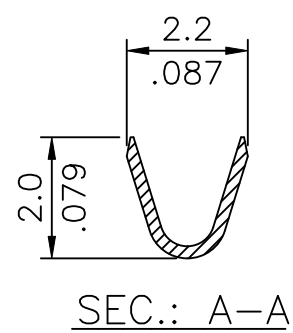
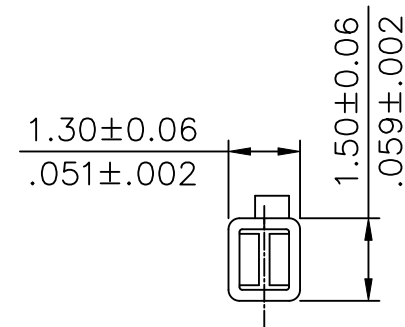
* Material: Phosphor Bronze

Wire Range	Insulation Diameter	Reel Q'ty
AWG #22~#28	1.70 MAX. (.067)	15,000 PCS.


Ordering Code

CI33 T02 1 P E 0
 ① ② ③ ④ ⑤ ⑥

- ① Series No.
- ② Type: T02 = AWG #22 ~ #28
- ③ Plating: 1 = 2.03 μm (80 $\mu\text{''}$) Min. Tin over 0.76 μm (30 $\mu\text{''}$) Nickel
- ④ Material: P = Phosphor Bronze
- ⑤ Plating method: E = Pre-tinned
- ⑥ Option: 0 = Standard



RoHS Compliant

SYMBOL	NAME	DATE	REVISIONS	APPROVED BY:	DATE	UNIT:	TITLE:	CviLux Corporation			
⑦	Sun	4/23-24'	ECRT124013/ECNT124121		DATE	mm / inch	CRIMP TERMINAL	 瀚荃股份有限公司 CviLux Corporation			
⑥	Karen	6/13-15'	ECNT115140/ECRT115017	DRAWN BY:	Sun	4/30-24'					
⑤	Enya	7/9-13'	ECR13071-0/ECN13182-0	ENGINEER:	Sun	4/30-24'		DRAWING NO. CI3304SL PART NO. CI33T021PE0 SCALE 5 / 1 SHEET 1 OF 1			
④	Karen	7/14-12'	ECN12164-0/ECR12024-0	CHECKED BY:	Eisley	4/30-24'					
				APPROVED BY:	Eisley	4/30-24'					

ISSUED
 2024/05/03
 CviLux Corp

TOLERANCE UNLESS OTHERWISE SPECIFIED	
.X ± 0.20/.008	X' ± 1'
.XX ± 0.10/.004	.X' ±
.XXX ± 0.05/.002	.XX' ±