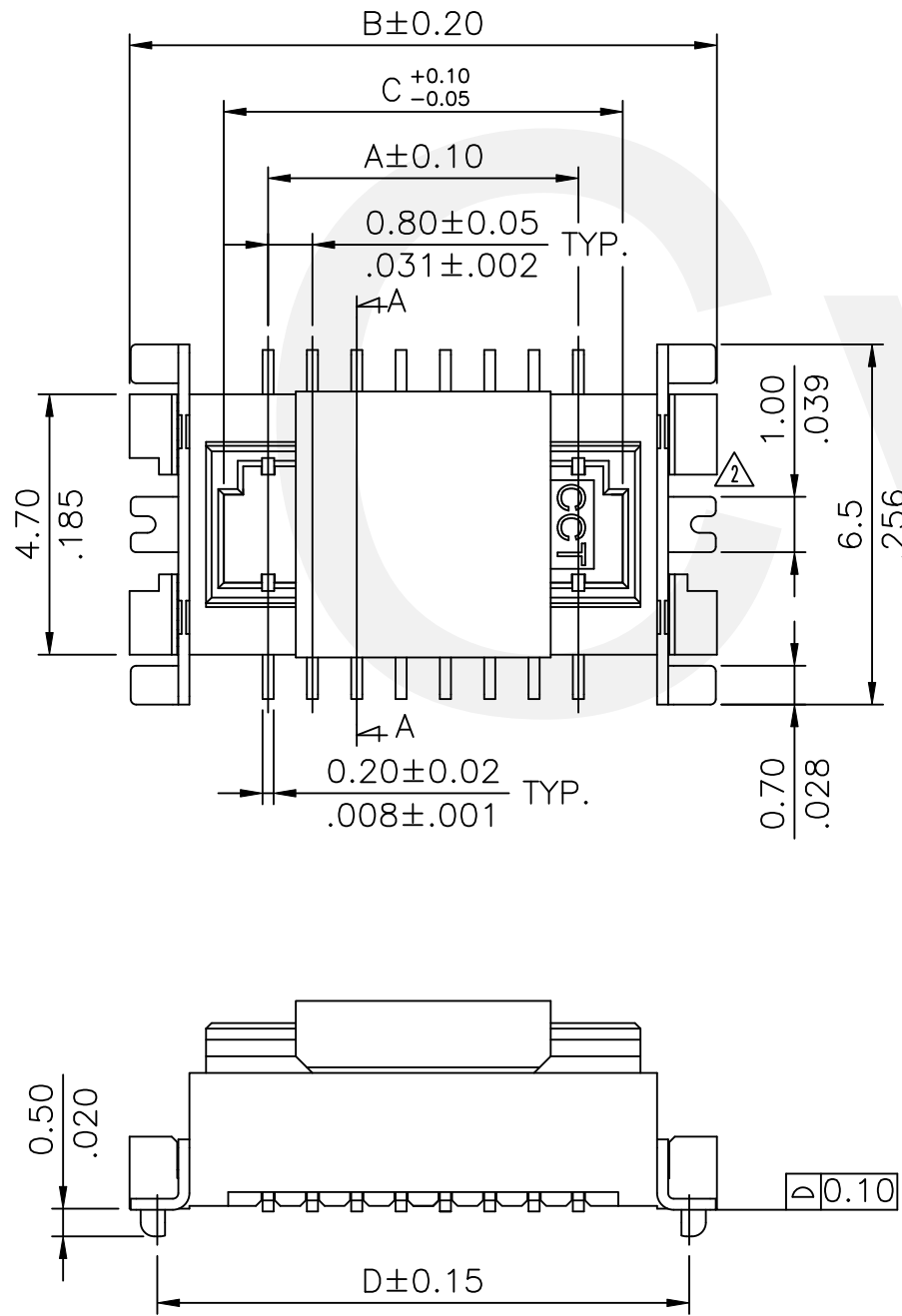


DIM.A = 0.80 * No. of Spaces
 DIM.B = DIM.A + 5.0
 DIM.C = DIM.A + 1.6
 DIM.D = DIM.A + 4.0

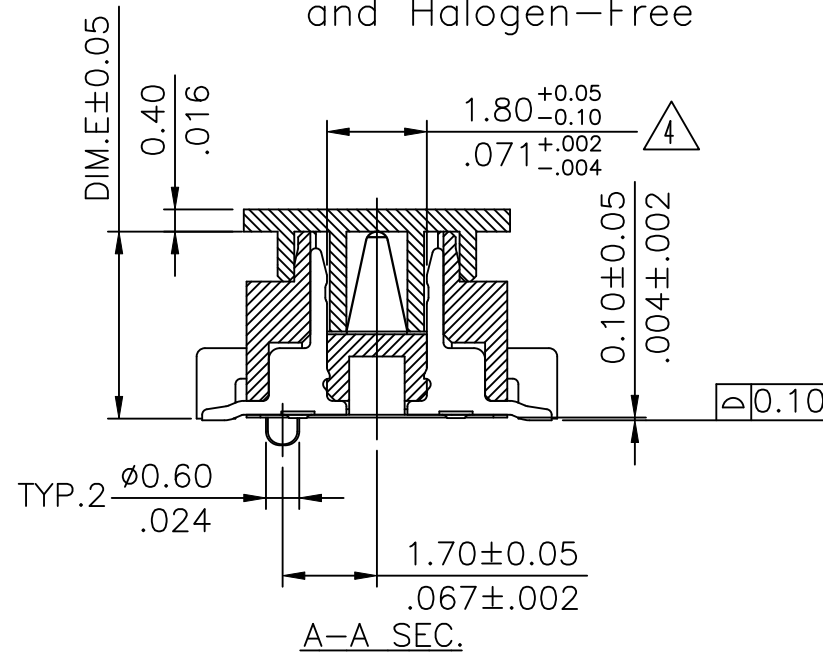
* Available in 10,12,14,16,20,24,26,
 30,34,36,40,50,60,80 circuits



Ordering Code:

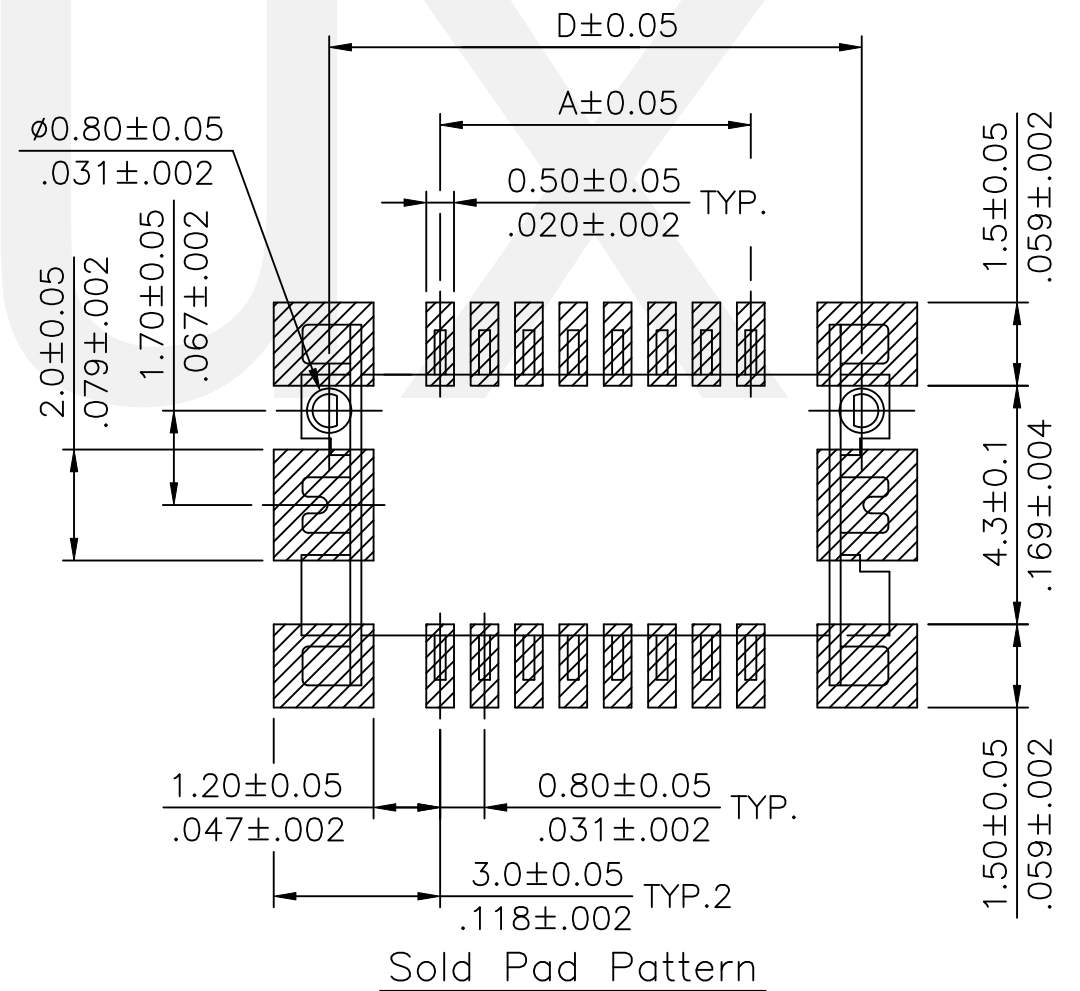
CBRD *** S * 2 * ** R 0 -NH
 ① ② ③ ④ ⑤ ⑥ ⑦ ⑧ ⑨ ⑩

- ① Series No.
- ② No. of Contact:
- ③ Connector Type: S = Receptacle
- ④ Height: A: DIM.E=3.40mm
 B: DIM.E=4.40mm; C: DIM.E=5.40mm
 D: DIM.E=6.40mm; E: DIM.E=7.40mm
 F: DIM.E=8.40mm; G: DIM.E=10.40mm
- ⑤ Plating code:
 2= Gold flash plated over
 1.27μm(50μ") Nickel
- ⑥ Fixed Tab Option:
 0 = Without Fixed Tabs
 F = With Fixed Tabs
- ⑦ Pegs Option: 00 = Without Pegs
 P1 = With Pegs
- ⑧ Packing Option: R = Tape & Reel
- ⑨ Other Option: 0 = Standard
- ⑩ -NH = For Lead Free IR Processes
 and Halogen-Free



Note:
 1. Material:

- * Insulation:
 Nylon 6T + 30% G.F. UL94V-0
 Color Nature(Halogen-Free)
- * Contact: Brass, t=0.2mm
- * Fixed tab: Brass, With Gold Flash,
 t=0.2mm
- * PAD: Nylon 6T + 30% G.F. UL94V-0
 (Halogen-Free)



Halogen-Free Lead Free Process RoHS Compliant

⑤	Jessie	12/8-22'	ECNT122231/ECRB122046		DATE	UNIT: mm / inch	TITLE:	瀚荃股份有限公司 CviLux Corporation
④	Enya	10/18-13'	ECNT113086/ECRT113019	DRAWN BY:	Jessie	12/8-22'	0.80mm(.031") Board To Board Receptacle Connector (For Mating Height 4.0/5.0/6.0/ 7.0/8.0/9.0/11.0mm)	
③	Karen	5/09-13'	ECN13104-0/ECR13022-0	ENGINEER:	Sun	12/8-22'	TOLERANCE UNLESS OTHERWISE SPECIFIED	
②	Karen	2/08-11'	ECN11030/ECR11006-0	CHECKED BY:	Eisley	12/8-22'	.X ± 0.30/.012 X* ± 1" .XX ± 0.20/.008 .X* ± .XXX ± 0.10/.004 .XX* ±	
SYM	NAME	DATE	REVISIONS	APPROVED BY:	Eisley	12/8-22'		

CviLux Corp
 2022/12/20
 ISSUED

DRAWING NO.	CBRD02SF	PART NO.	CBRD***S*2***R0-NH
SCALE	5 / 1	SHEET	1 OF 3

Male	CBRD***PA2***R0-NH 	CBRD***PA2***R0-NH 	CBRD***PA2***R0-NH 	CBRD***PA2***R0-NH 	CBRD***PA2***R0-NH 	CBRD***PA2***R0-NH 	CBRD***PA2***R0-NH
Female	CBRD***SA2***R0-NH 	CBRD***SB2***R0-NH 	☆ CBRD***SC2***R0-NH 	☆ CBRD***SD2***R0-NH 	CBRD***SE2***R0-NH 	☆ CBRD***SF2***R0-NH 	☆ CBRD***SG2***R0-NH
Mating Height			☆	☆		☆	☆

⚠ Remark : Please contact CviLux if "☆" type is needed.

Halogen-Free Lead Free Process RoHS Compliant

5	Jessie	12/8-22'	ECNT122231/ECRB122046		DATE	UNIT: mm / inch	TITLE:	瀚荃股份有限公司 CviLux Corporation
4	Enya	10/18-13'	ECNT113086/ECRT113019	DRAWN BY:	Jessie	12/8-22'	0.80mm(.031") Board To Board Receptacle Connector (For Mating Height 4.0/5.0/6.0/ 7.0/8.0/9.0/11.0mm)	
3	Karen	5/09-13'	ECN13104-0/ECR13022-0	ENGINEER:	Sun	12/8-22'		
2	Karen	2/08-11'	ECN11030/ECR11006-0	CHECKED BY:	Eisley	12/8-22'		
SYM	NAME	DATE	REVISIONS	APPROVED BY:	Eisley	12/8-22'		

CviLux Corp
 2022/12/20
 ISSUED

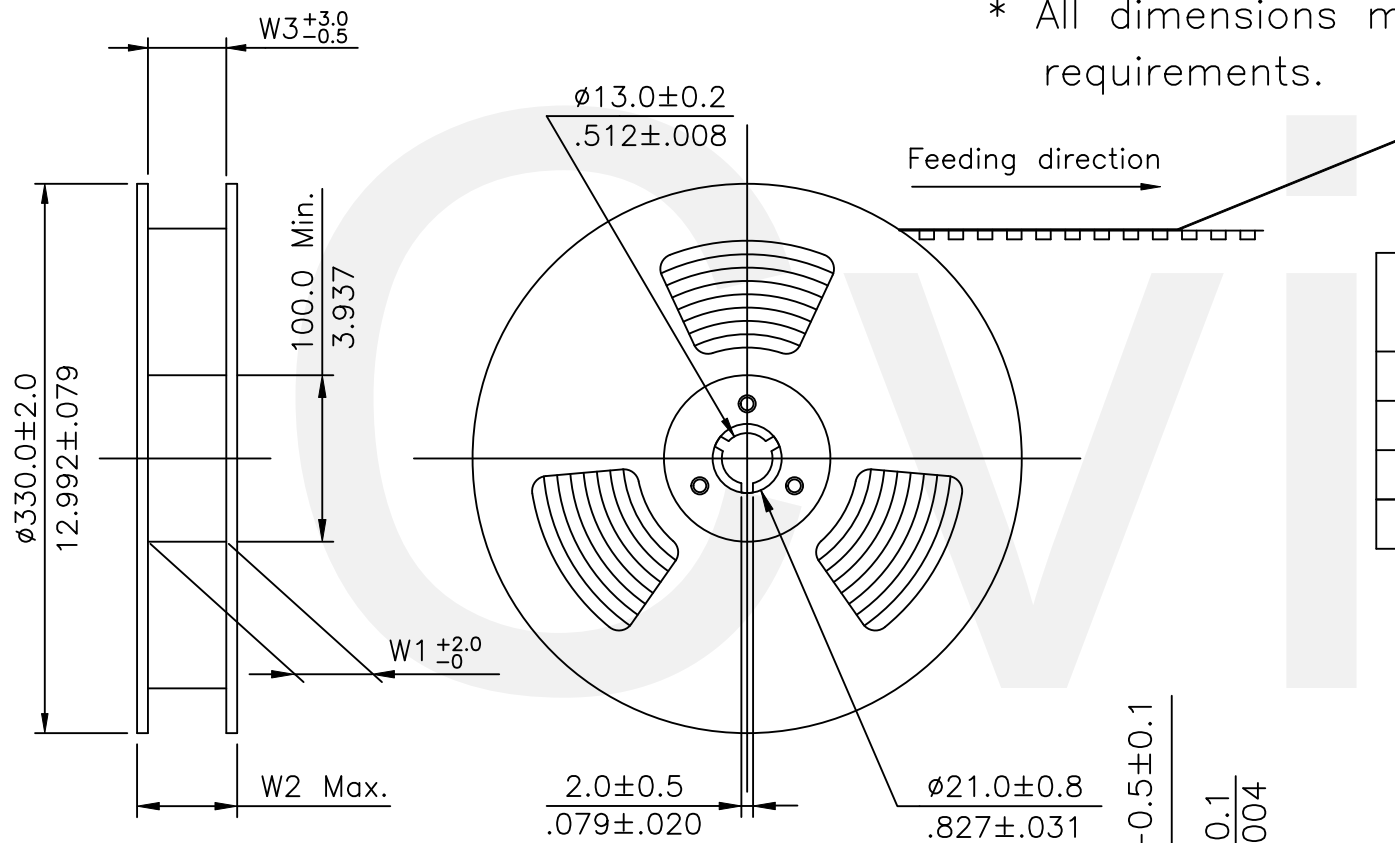
DRAWING NO.	CBRD02SF	PART NO.	CBRD***S*2***R0-NH
SCALE	4 / 1	SHEET	2 OF 3

NOTE :

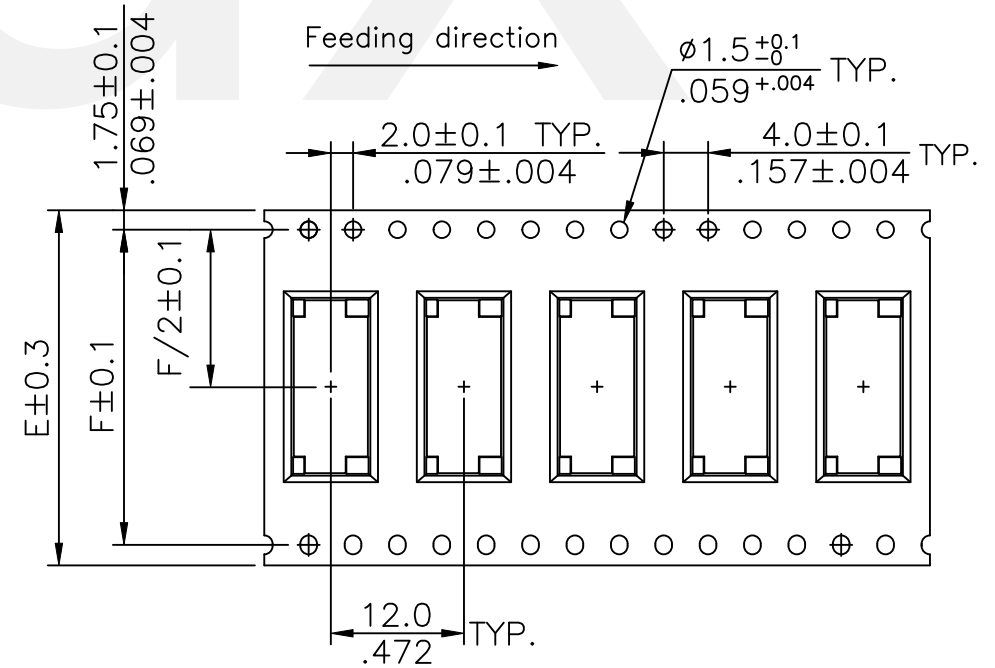
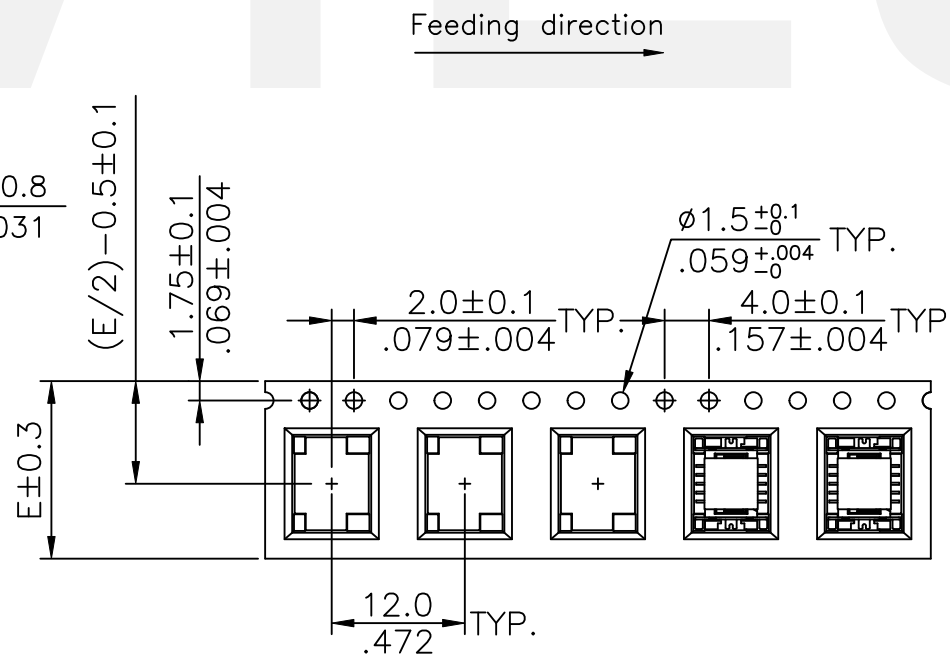
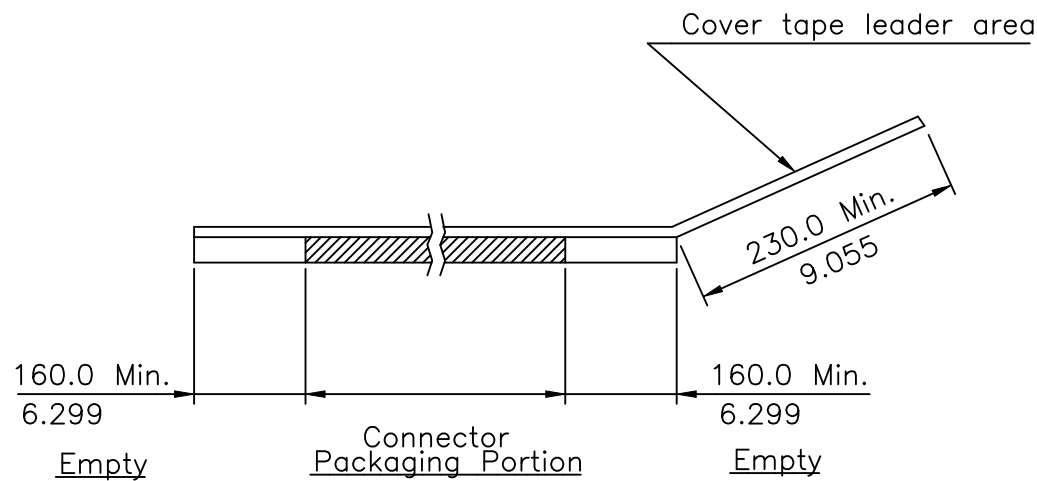
- * Reel Material : HIPS
- * Carrier Material : Clear, Conductive Polystyrene Alloy
- * Cover Tape Material : Polyester
- * Cover Tape Peel Strength : 0.1N – 1.3N
- * Carrier camber is within 1mm in 100mm
- * All dimensions meet EIA-481-2 & EIA-481-3 requirements.



Part No.	Quantity
CBRD0**SA2***R0-NH	1000 PCS/Reel
CBRD0**SB2***R0-NH	850 PCS/Reel
CBRD0**SC2***R0-NH	750 PCS/Reel
CBRD0**SD2***R0-NH	650 PCS/Reel
CBRD0**SE2***R0-NH	400 PCS/Reel
CBRD0**SF2***R0-NH	400 PCS/Reel
CBRD0**SG2***R0-NH	300 PCS/Reel



Circuits	Dimension					Packing (Reel/Carton)
	E	F	W1	W2	W3	
10~26	24.0(.945)	-	24.5(.965)	30.5(1.200)	24.5(.965)	9
30~40	32.0(1.260)	28.40(1.118)	32.5(1.280)	38.5(1.516)	32.5(1.280)	7
50~60	44.0(1.732)	40.40(1.591)	44.5(1.752)	50.5(1.988)	44.5(1.752)	5
80	56.0(2.205)	52.40(2.063)	56.5(2.224)	62.5(2.460)	56.5(2.224)	4



RoHS Compliant

REV	NAME	DATE	REVISIONS	APPROVED BY:	DATE	UNIT: mm / inch	TITLE:	瀚荃股份有限公司 CviLux Corporation
5	Jessie	12/8-22'	ECNT122231/ECRB122046			DATE	0.80mm(.031") Board To Board Receptacle Connector (For Mating Height 4.0/5.0/6.0/ 7.0/8.0/9.0/11.0mm)	
4	Enya	10/18-13'	ECNT113086/ECRT113019	DRAWN BY: Jessie	12/8-22'	UNIT: mm / inch		
3	Karen	5/09-13'	ECN13104-0/ECR13022-0	ENGINEER: Sun	12/8-22'	TOLERANCE UNLESS OTHERWISE SPECIFIED		
2	Karen	2/08-11'	ECN11030/ECR11006-0	CHECKED BY: Eisley	12/8-22'	.X ± X' ± 1'		
SYM	NAME	DATE	REVISIONS	APPROVED BY: Eisley	12/8-22'	.XX ± X' ± 1'		

CviLux Corp
 2022/12/20
 ISSUED