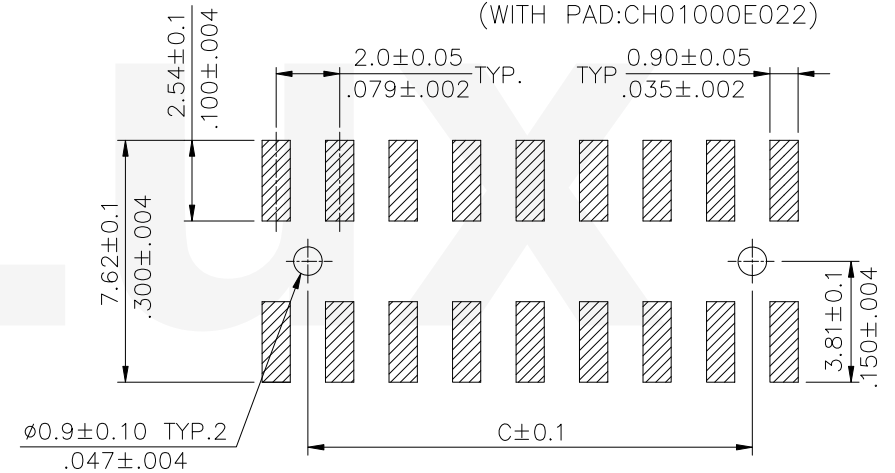
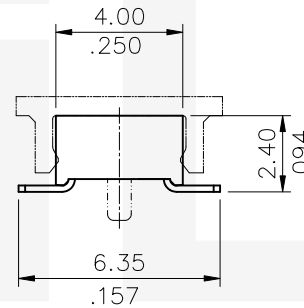
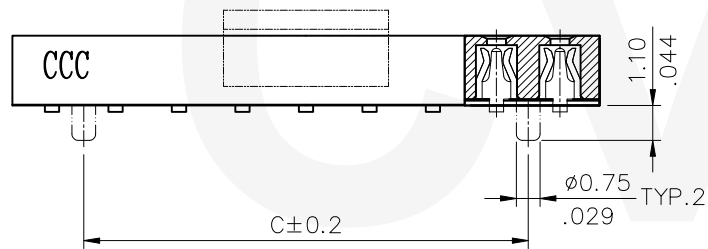
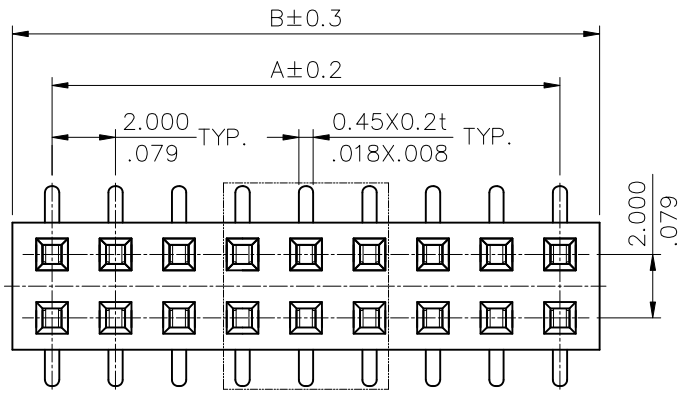


### Ordering Code:

CB76 \*\* \* M 1 \* \*  
 ① ② ③ ④ ⑤ ⑥ ⑦

- ① Series No.
- △ ② NO. of Circuits: 04 To 40
- ③ Plating code:  
2 = Gold flash plated over 50μ" Nickel
- ④ Tail Style: M = SMT Type
- ⑤ Color: 1 = Black
- ⑥ Option: 0 = With Peg  
1 = Without Peg
- ⑦ Other Options: 0 = Standard (Tube Packing)  
R = Tape & Reel  
(WITH PAD: CH01000E022)



Recommended P.C. Board Layout

A = 2.00 \* No. of Spaces

B = A + 2.5

C = A - 2.0

\* Available in 4 through 40 circuits

Lead Free Process

RoHS Compliant

④						DATE	UNIT: mm / inch	TITLE: 2.00MM(.079") DUAL ROW BOARD MOUNT CONNECTOR	 瀚荃股份有限公司 CviLux Corporation
③			DRAWN BY: Sun		7/18-19'	TOLERANCE UNLESS OTHERWISE SPECIFIED .X ± 0.30 / .012    .X' ± 1" .XX ± 0.20 / .008    .X" ± .XXX ± 0.10 / .004    .XX" ±	MATERIAL:		
②			ENGINEER: Sun		7/18-19'		FINISH:		
①	Sun	7/18-19'	CHECKED BY: Eisley		7/19-19'		DRAWING NO. CB7601SB	PART NO. CB76**2M1**	
SYM	NAME	DATE	REVISIONS	APPROVED BY: Eisley	7/19-19'	SCALE	4 / 1	SHEET	1 OF 1