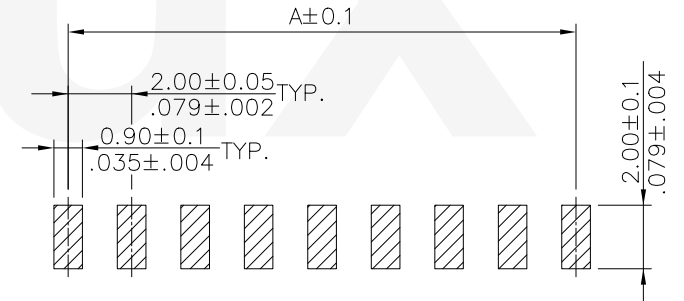
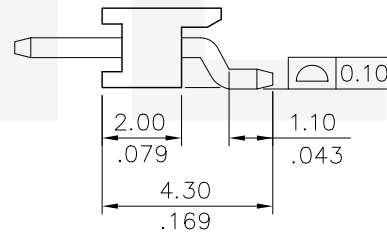
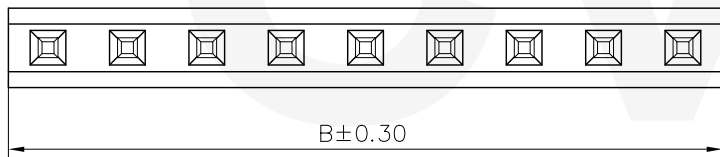
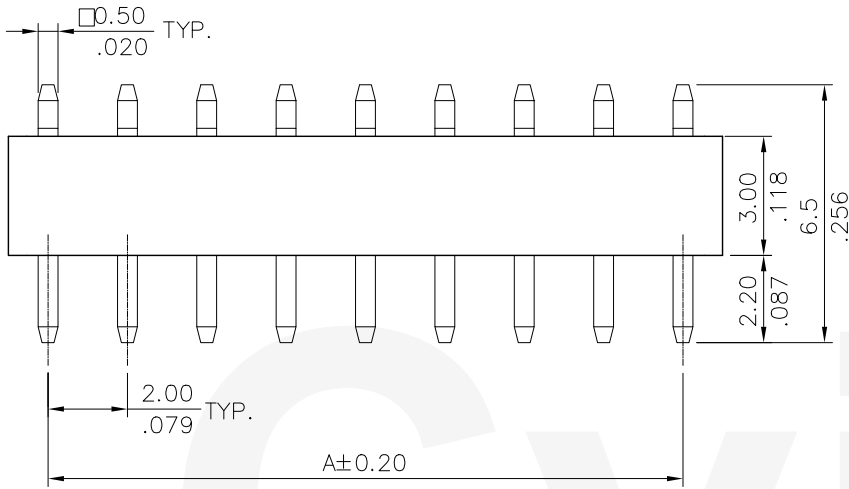


Material:  
\* Contact: Brass

### Ordering Code

CH11 \*\* 2 S A 01 -NH  
 ① ② ③ ④ ⑤ ⑥ ⑦

- ① Series No.
- ② No. of Circuits 02~40 PIN
- ③ Plating Code:  
2= Gold flash plated  
over 1.27  $\mu\text{m}$ (50  $\mu\text{m}$ ) Nickel
- ④ Tail Style: S= Side entry SMT Type
- ⑤ Insulation:  
A= LCP UL 94V-0, Color Black
- ⑥ 01= Pin Length
- ⑦ -NH=For Lead Free IR Processes and Halogen-Free



Recommended P.C. Board Layout

DIM. A=2.00 X NO. OF SPACES

DIM. B=A + 2.0

\* Available in 2 through 40 circuits

Lead Free Process

RoHS Compliant

CVILUX CORP  
 2010.05.05  
 ISSUED

4					DATE	UNIT: mm / inch	TITLE: 2.00MM(.079") SIDE ENTRY SINGLE ROW BORAD MOUNT PIN HEADER	瀚荃股份有限公司 CviLux Corporation
3				DRAWN BY: Tim	3/29-10'	TOLERANCE UNLESS OTHERWISE SPECIFIED	MATERIAL:	
2				ENGINEER: Eisley	3/29-10'	.X ± 0.30 / .012 X' ± 1"	CUSTOMER: BV1008	DRAWING NO. CH1161SA
1	Tim	3/25-10'	ECN10082	CHECKED BY: David	3/29-10'	.XX ± 0.20 / .008 X' ±		SCALE 5/ 1
SYM	NAME	DATE	REVISIONS	APPROVED BY: David	3/29-10'	.XXX ± 0.10 / .004 .XX' ±		SHEET 1 OF 1