

Material :

- * Body : High temperature plastic
UL 94V-0 Color Nature
- * Contact : Copper alloy
- * Fixed tab : Copper alloy with
Matte Tin plated

A = 1.0 * No. of Spaces

B = A + 5.6

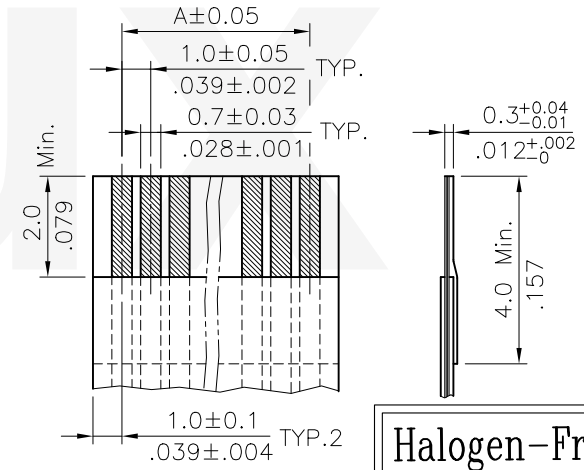
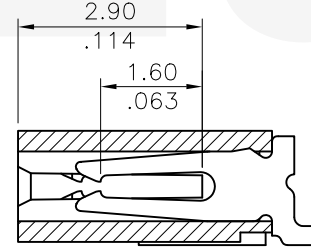
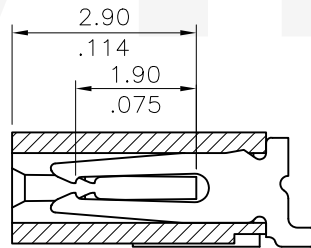
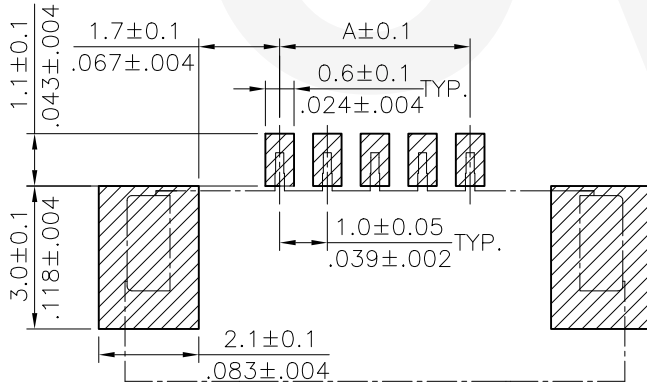
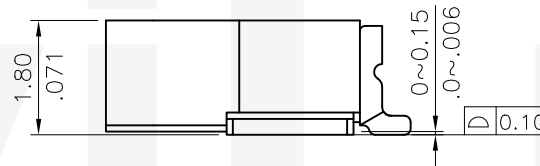
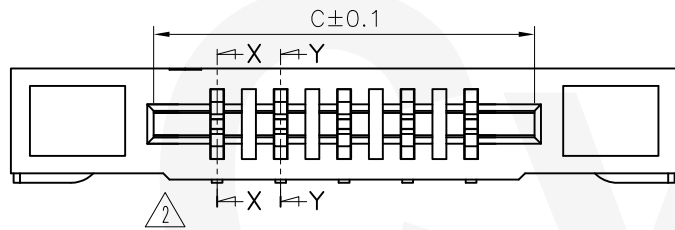
C = A + 2.1

* Available in 4 through 15 circuits

Ordering Code

CF06 ** 1 H 0 *A -NH
① ② ③ ④ ⑤ ⑥ ⑦

- ① Series No.
- ② No. of Circuits
- ③ Plating code:
1 = 3.05um(120u") Min. Matte Tin on Contact area and Solder tails, 1.27um(50u") Nickel Underplating over all
- ④ Contact style: H = Side entry
- ⑤ Color: 0 = Nature
- ⑥ Other option: RA = Tape & Reel
- ⑦ Other option: TA = Tube Packing
NH = For Lead Free IR Processes and Halogen-Free



Accommodated FFC/FPC

Halogen-Free
Lead Free Process
RoHS Compliant

Sold Pad Pattern

④																				
③																				
②	Ellie	12/12-14'	ECNT114290/ECRH114035																	
①	Enya	8/30-12'	ECR12043-2/ECN12209-0																	
SYM	NAME	DATE	REVISIONS																	
				CVILUX CORP		DATE	UNIT: mm / inch	TITLE:		<div style="display: flex; align-items: center; justify-content: space-between;"> <div> <p>瀚荃股份有限公司</p> <p>CviLux Corporation</p> </div> </div>										
				2014.12.27		DRAWN BY:	Ellie	12/17-14'	1.00mm(.039") LIF FPC/FFC SURFACE MOUNT CONNECTOR											
				ISSUED		ENGINEER:	Sun	12/17-14'	TOLERANCE UNLESS OTHERWISE SPECIFIED											
						CHECKED BY:	Eisley	12/19-14'	.X ± 0.15/.006 X' ± 1'											
						APPROVED BY:	Eisley	12/19-14'	.XX ± 0.10/.004 X' ±											
									.XXX ± 0.05/.002 XX' ±		MATERIAL:									
									FINISH:		DRAWING NO.	CF0602SC	PART NO.	CF06**1H0*A-NH						
											SCALE	8 / 1	SHEET	1 OF 2						

