

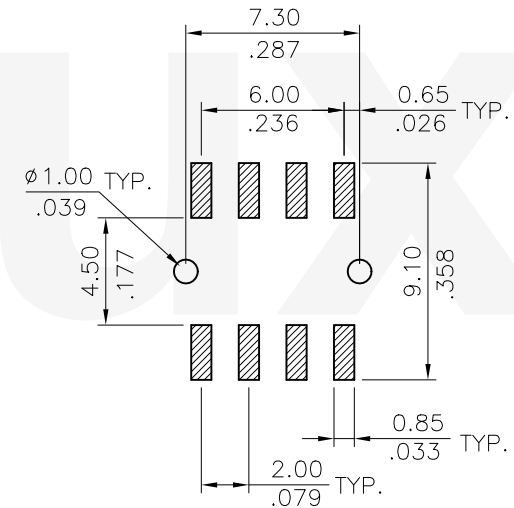
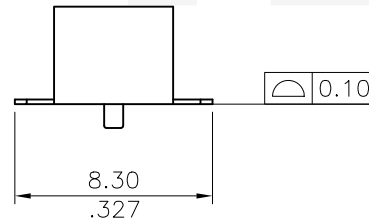
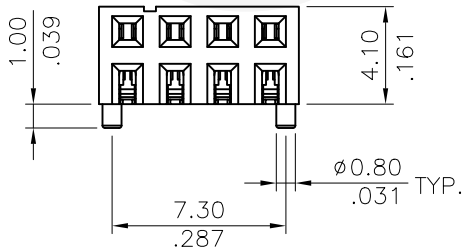
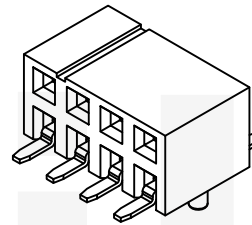
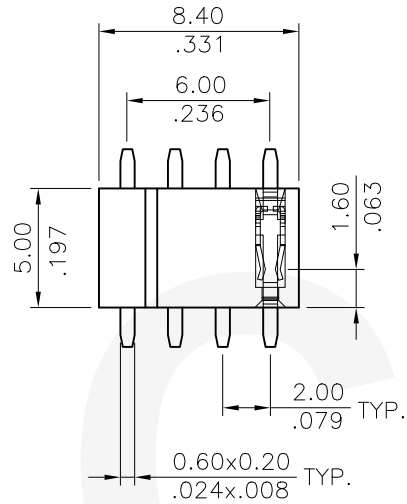
Notes:

- \* Insulation: High Temperature Plastic UL 94V-0
- \* Contact: Phosphor Bronze
- \* For Lead Free IR Reflow Process

Ordering Code:

CB71 08 2 N 1 R A  
 ① ② ③ ④ ⑤ ⑥ ⑦

- ① Series No.
- ② NO. of Circuits:
- ③ Plating code:  
2 = Gold flash plated over 50μ" Nickel
- ④ Tail Style: N = Side Entry SMT Type
- ⑤ Color: 1 = Black
- ⑥ Packing Option: R = Tape & Reel Packing
- ⑦ Option:  
A = Position of pegs is the customer request



Recommended P.C. Board Layout

Lead Free Process

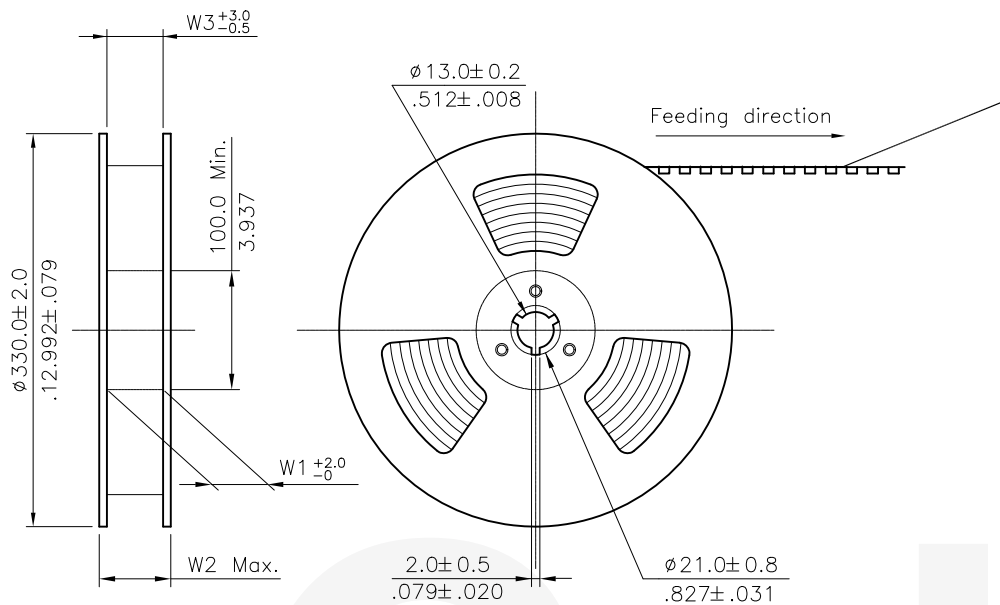
RoHS Compliant

**CIVILUX CORP**  
 2017.05.04  
 ISSUED

④					DATE	UNIT: mm / inch	TITLE: 2.00MM(.079") DUAL ROW BOARD MOUNT CONNECTOR
③				DRAWN BY: Sandy	4/25-17'	TOLERANCE UNLESS OTHERWISE SPECIFIED	MATERIAL:  FINISH:
②				ENGINEER: Sun	4/25-17'	.X ± 0.20 / .008 X' ± 1"	
①				CHECKED BY: Easley	5/2-17'	.XX ± 0.20 / .008 .X' ±	
SYM	NAME	DATE	REVISIONS	APPROVED BY: Easley	5/2-17'	.XXX ± 0.20 / .008 .XX' ±	

 瀚荃股份有限公司  
 CviLux Corporation

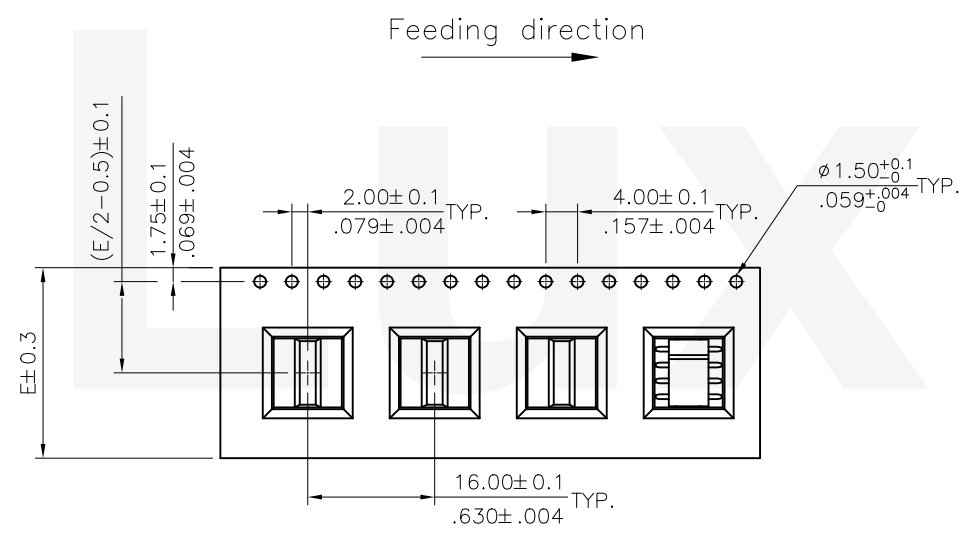
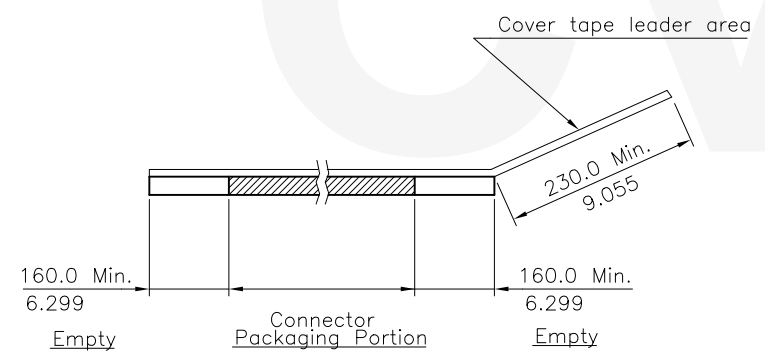
DRAWING NO.	CB7101SA	PART NO.	CB71082N1RA
SCALE	2 / 1	SHEET	1 OF 2



NOTES:

1. 10 sprocket hole pitch cumulative tolerance  $\pm 0.20$
2. Carrier camber is within 1 mm in 100 mm.
3. Material : Black, Transparent Polystyrene Alloy
4. All dimensions meet EIA-481-2 requirements.
5. Thickness :  $0.40 \pm 0.05$ mm.
6. Component load per 13" Reel : 750 pcs.

Circuits	Dimension			
	E	W1	W2	W3
8	24.0(.945)	24.5(.965)	29.1(1.146)	24.5(.965)



WIDTH : 24 mm Carrier

RoHS Compliant

4						DATE	UNIT: mm / inch	TITLE: 2.00MM(.079") DUAL ROW BOARD MOUNT CONNECTOR	瀚荃股份有限公司 CviLux Corporation	
3						DRAWN BY: Sandy	TOLERANCE UNLESS OTHERWISE SPECIFIED	MATERIAL:		
2						ENGINEER: Sun	.X ± 0.30 / .012 X' ± 1'	FINISH:		
1						CHECKED BY: Easley	.XX ± 0.20 / .008 X' ±			
SYM	NAME	DATE	REVISIONS	APPROVED BY: Easley	DATE: 5/2-17'		.XXX ± 0.10 / .004 X' ±	DRAWING NO. CB7101SA	PART NO. CB71082N1RA	
									SCALE	SHEET 2 OF 2

