

Note:

* Base : LCP UL94V-0, Color Black

* SQ. Pin: Copper alloy


Ordering Code:

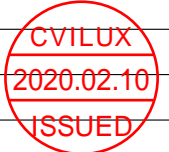
CP60 ** P * H 00 -NH
 ① ② ③ ④ ⑤ ⑥ ⑦

- ① Series No.
- ② No. of Circuits: 02 to 12
- ③ P= DIP Type
- ④ Plating:
 1= Tin Plated over Nickel
 B= Selective 15 μ" Gold Plated over Nickel
 C= Selective 30 μ" Gold Plated over Nickel
- ⑤ Type: H= Right Angel
- ⑥ Option: 00= Standard
- ⑦ Other option:
 -NH= For Lead Free Wave soldering Processes and Halogen-Free

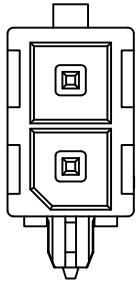
| Circuits | Dimension | | |
|----------|--------------|--------------|--------------|
| | A | B | C |
| 2 | - | 8.35(.329) | - |
| 4 | 5.70(.224) | 12.05(.474) | - |
| 6 | 11.40(.449) | 17.75(.699) | 11.40(.449) |
| 8 | 17.10(.673) | 23.45(.923) | 17.10(.673) |
| 10 | 22.80(.898) | 29.15(1.148) | 22.80(.898) |
| 12 | 28.50(1.122) | 34.85(1.372) | 28.50(1.122) |

Halogen-Free Lead Free Process RoHS Compliant

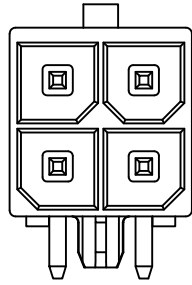
| | | | | | | | | |
|-----|-------|----------|------------|---------------------|-----------|---|---|--|
| 4 | | | | | DATE | UNIT: mm / inch | TITLE: CP60 series 5.70mm DIP H type power connector |  瀚荃股份有限公司 CviLux Corporation |
| 3 | | | | DRAWN BY: Clark | 11/19-19' | TOLERANCE UNLESS OTHERWISE SPECIFIED | MATERIAL: | |
| 2 | | | | ENGINEER: Clark | 11/19-19' | .X ± 0.30/.012 X* ± r | DRAWING NO. CP6002SA PART NO. CP60**P1H00-NH | |
| 1 | Clark | 07/16-19 | ECNT119180 | CHECKED BY: Eisley | 12/13-19' | .XX ± 0.25/.010 .X* ± | | |
| SYM | NAME | DATE | REVISIONS | APPROVED BY: Eisley | 12/13-19' | .XXX ± .XX* ± | FINISH: | SCALE 2 / 1 SHEET 1 OF 2 |



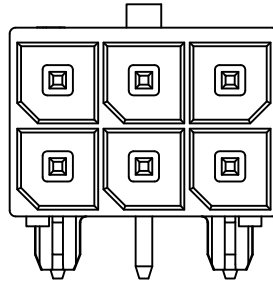
02 PIN



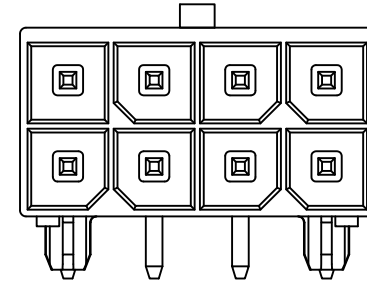
04 PIN



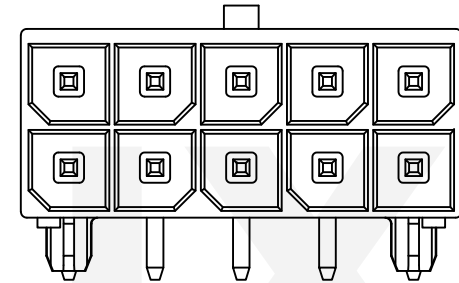
06 PIN



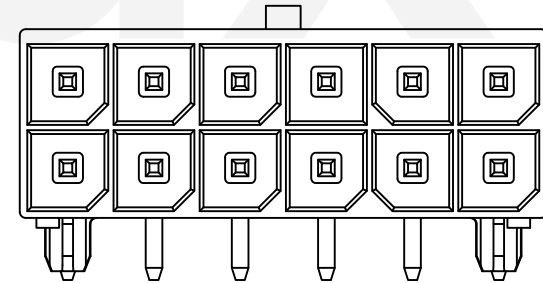
08 PIN



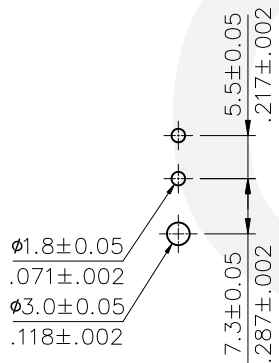
10 PIN



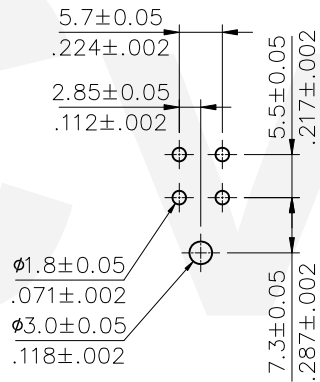
12 PIN



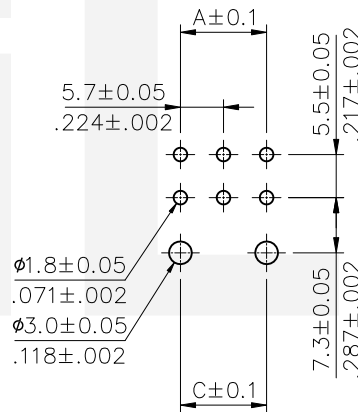
2 Circuits



4 Circuits



6~12 Circuits




Recommended P.C. Board layout

Halogen-Free

Lead Free Process

RoHS Compliant

| | | | | | | | | |
|-----|-------|----------|------------|---------------------|-----------------|---|---|--|
| 4 | | | | | DATE | UNIT: mm / inch | TITLE: CP60 series 5.70mm DIP H type power connector |  瀚荃股份有限公司 CviLux Corporation |
| 3 | | | | | DRAWN BY: Clark | TOLERANCE UNLESS OTHERWISE SPECIFIED | MATERIAL: | |
| 2 | | | | | ENGINEER: Clark | .X ± 0.30/.012 X* ± r | DRAWING NO. CP6002SA PART NO. CP60**P1H00-NH | |
| 1 | Clark | 07/16-19 | ECNT119180 | CHECKED BY: Easley | 12/13-19' | .XX ± 0.25/.010 .X* ± | | |
| SYM | NAME | DATE | REVISIONS | APPROVED BY: Easley | 12/13-19' | .XXX ± .XX* ± | FINISH: | SCALE 2 / 1 SHEET 2 OF 2 |

