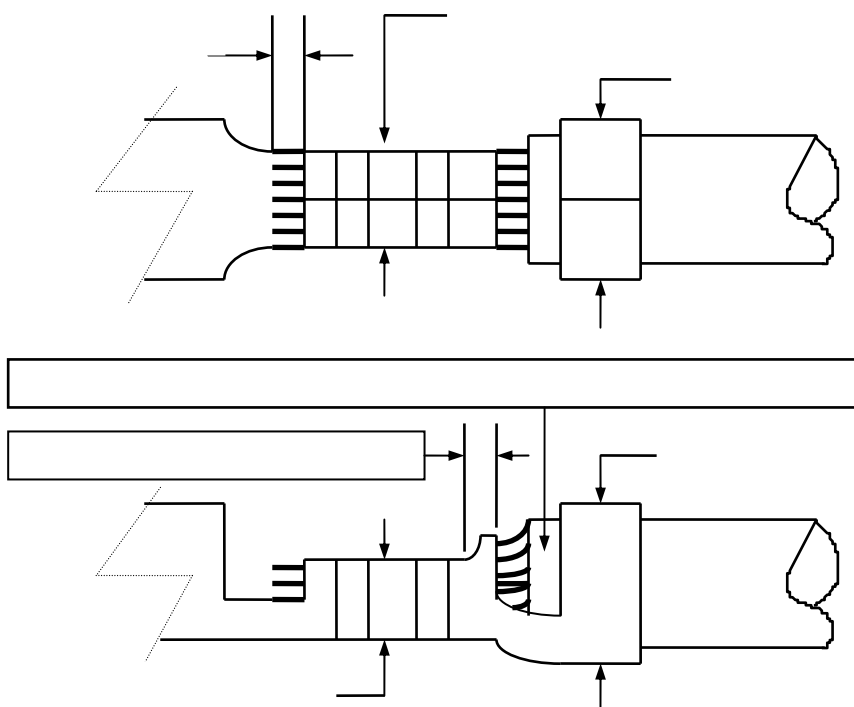


ENGINEERING DEPT.	CRIMP SPECIFICATION For CI99T012PP0 TERMINAL	SPEC. No.:SCCI0481
		PAGE: 1 / 1

1. Crimp height and width of crimped core should be set as required. (crimped height and width of wire barrel)
2. Crimp width of crimped sheath shall be adjusted according to the final out side diameter and the kind of electric wire, to the extent that sheathed wire won't be easily taken off from contact nor too much crimped. (crimped width of insulation barrel)



Subject : UL 1061 or equivalent type electric wire

AWG #	Conductor mm	Insulator Diameter	Applicator	Core crimp length	Dim. L
#24~#28	0.127 – 0.160	0.95-1.20 mm	-	0.6 – 0.8 mm	0.2 – 0.4 mm

Wire Gage (AWG #)	Conductor Crimp Area		Insulator Crimp Area		Terminal Tensile Strength
	Width (1)	Height (2)	Width (3)	Height (4)	
#24	1.04-1.06	0.67 – 0.69	1.27 Max.	–	3.0 Kgf
#26		0.59 – 0.62		–	2.0 Kgf
#28		0.55 – 0.56		–	1.3 Kgf

DATE	REVISIONS	SPEC BY:	Denis
		CHKD BY:	Clark
		APPR BY:	David

